

DocuWide
2055 MF



DocuWide 2055 MF

The digital multifunction device that scans
A0-size and prints A1-size documents



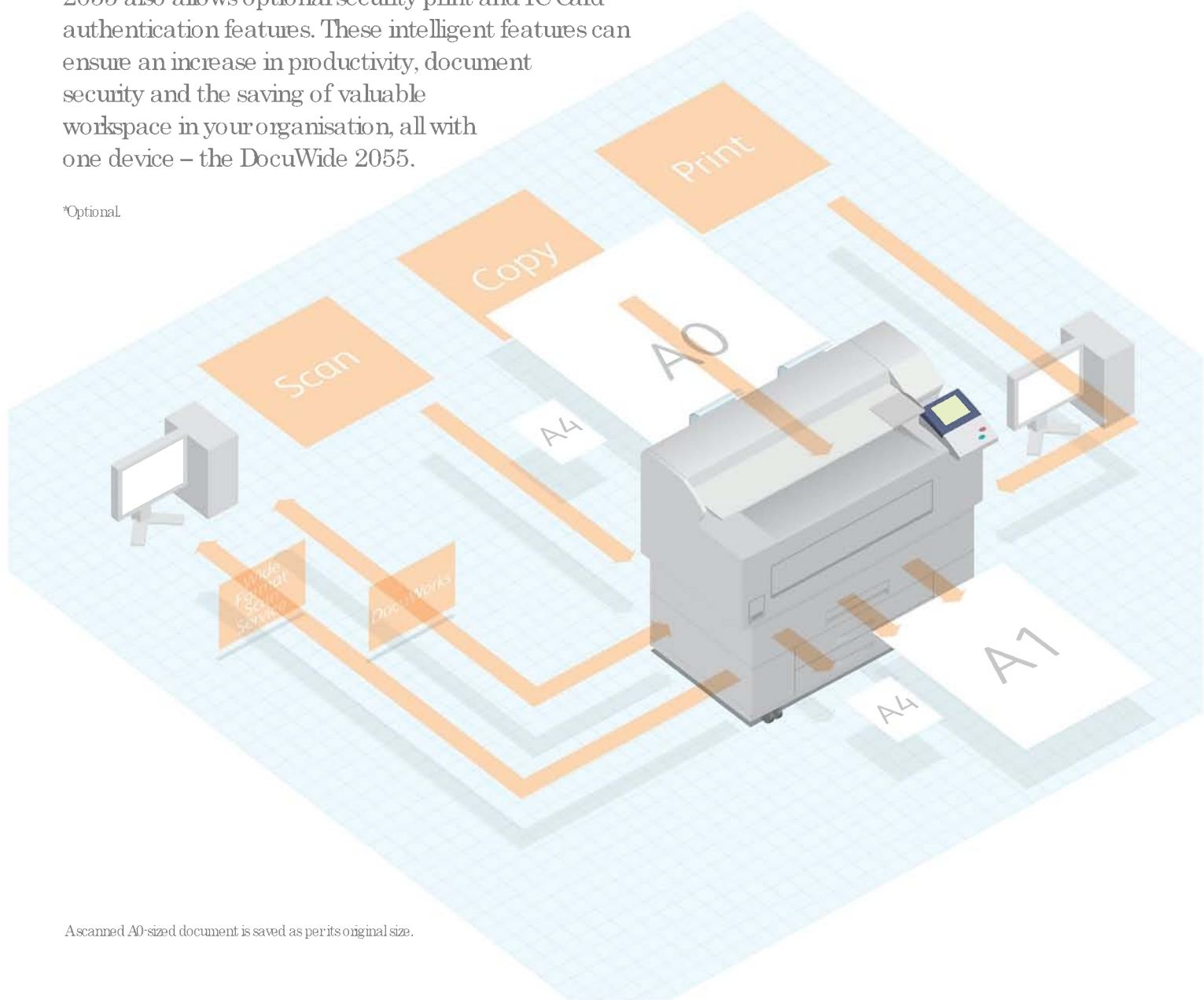
The Efficient, One-Stop, Secure Device For Large-scale Scanning And Printing

Proper information management of blueprints and large-format drawings is a main concern for organisations dealing with engineering, construction and design. With DocuWide 2055 however, large drawings and documents can now be easily and securely handled.

Fuji Xerox's latest high-performance, wide-format digital multifunction device allows scanning of large-format drawings and technical documents. Using the add-on DocuWorks software*, an easy-to-use document handling solution that eliminates the need for physical storage space, these scans can then be saved and managed as electronic documents.

While offering improved operability and performance, DocuWide 2055 also allows optional security print and IC Card authentication features. These intelligent features can ensure an increase in productivity, document security and the saving of valuable workspace in your organisation, all with one device – the DocuWide 2055.

*Optional.



Scanned A0-sized document is saved as per its original size.



DocuWide 2055MF



One roll with space box

DocuWide 2055MF



One roll with two A3/A4 paper tray

DocuWide 2055



Two roll model

Space Saving Design

Save valuable physical workspace with DocuWide 2055's compact body that comes with an inner front exit tray.

Environmentally Friendly

This ecologically-friendly device satisfies international environmental standards by operating on lower power.

Operability

DocuWide 2055 has a similar operation interface as other Fuji Xerox office multifunction devices to help streamline your work processes that ultimately will reduce workload.

Productivity

The highest speed in its class, DocuWide 2055 scans documents at 95 mm per second and prints A1-sized documents at a rate of 5 sheets per minute.

The standard model of DocuWide 2055MF comes with a bypass tray. A variety of paper feeder options are available:

- One 3-inch core roll (up to 200m) with Space Box
- Two 3-inch core rolls (up to 200m)
- One 3-inch core roll (up to 200m) and two A3/A4 paper trays

The DocuWide 2055MF model come with one 3-inch core roll (up to 200m) and a bypass tray as a standard. Two types of optional additional paper feeders are available:

- One 3-inch core roll (up to 200m)
- Two A3/A4 paper trays

	DocuWide 2055MF
Copy	✓
Print	✓
Scan	✓
Bypass Tray	✓
One 3-inch core roll (up to 200m)	✓
Additional One 3-inch core roll (up to 200m)	optional
Additional two A3/A4 trays	optional

Operability

All you need in one wide-format digital multifunction device

Save space with an inner front exit tray* that can stock A1-sized paper

The smart and streamlined design of the DocuWide 2055 MF allows firms to save valuable workspace. A0-sized documents are scanned, and from the inner front exit tray, printed documents are delivered to the tray on the front of the main unit. In addition, the print ejector can be positioned either in front or at the back of the main unit – a design feature that gives flexibility for placement in an office, for example, next to a desk or the middle of a room.



User-friendly User Interface LCD touch panel

With an easy-to-use User Interface LCD touch panel, first-time users of wide-format digital multifunction devices will find operating the DocuWide 2055 a breeze. Users can improve readability simply by tilting the User Interface. For users around the region, language options of English and Simplified Chinese are also available.



Choice of a paper feeder to suit your needs

The DocuWide 2055MF gives you the choice of optional paper feeders to suit your requirements. The DocuWide 2055MF allow you to select an optional paper feeder in addition to the standard 3-inch core roll paper feeder. You can use 3-inch core roll paper (which offers up to 200 metres of paper) and A3 or A4-sized paper*. All configurations come with a by-pass tray.

In addition, the DocuWide 2055 MF supports different roll paper sizes (such as A-series paper, special A-series paper including 620/225 mm-wide paper, and B-series paper of B2 width) so users can choose between a variety of paper quantities and sizes.

*By installing the optional cut-paper feeder unit, up to 250 sheets of paper can be loaded into each tray, for a total of 500 sheets.



Two rolls of 3-inch core roll paper installed



One roll of 3-inch core roll paper and two trays installed

Do more while you print

DocuWorks allows users to multi-task and work more efficiently. Even while printing, you can switch to scan mode and begin scanning the next document without having to wait for your print jobs to be completed.

Convenient and accessible

To ensure smooth operation, the power switch, control panel, document insertion guide, and all other components for basic operation are arranged on the right side of the device. Even during continuous use, ejected documents will not obscure the control panel.

Load paper easily with the auto loading feature

DocuWide 2055MF auto loading and auto cutting capabilities allow paper to be fed easily simply by positioning the paper's edge. A holder for spare paper makes for easy paper replacement. You can also install two types of rolls at the same time, such as regular paper, tracing paper and film.



Holder for temporarily setting down paper

Scan

The fastest scanner in its class

Speedy scanning speeds

The DocuWide 2055 device converts large-scale hardcopy drawings into electronic documents with the fastest scanning speed in its class. With a scanning speed of 95mm per second at a high resolution of 600dpi, hand-drawn documents can be easily converted into high quality electronic documents. The DocuWide 2055 MF supports a maximum width of 914 mm and a maximum length of 15 m*.

*The optional memory board for copy enhancement, additional scan memory and print memory are required.

Import of data into mailboxes

Up to 50 mailboxes are available. Users can convert scanned data into TIFF, PDF or CALS format and store them into the mailbox where 999 documents can be stored. Documents can then be retrieved from a client's PC according to your needs.

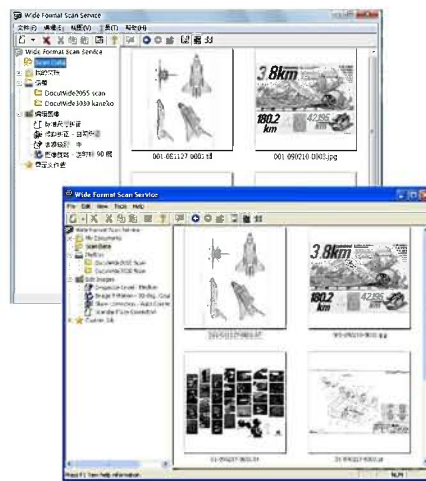
TWAIN-compliant network scanning function. Application softwares that support TWAIN, such as DocuWorks*, can be used to import scanned data into a client PC.

*Optional software.

Wide-Format Scan Service. Import scanned data in a mailbox to a folder on a client PC easily with the scanning software,

and even set it up to automatically import your scans on a regular basis. In addition to displaying normal thumbnails, the software allows users to enlarge thumbnail data for easier identification of thumbnails. This software also enables you to display scanned data and edit images by correcting the skew and eliminating noise.

Wide Format Scan window



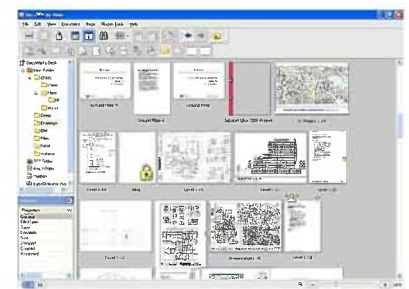
Easy retrieval for printing

Retrieve and print scanned data from a mailbox easily with DocuWide 2055MF.

Manage large-scale documents with DocuWorks 7.0

DocuWide 2055 is compatible with DocuWorks 7.0. This software supports standard drawings up to Special A0 and non-standard drawings of up to 2,400 × 2,400 mm. Actual-sized thumbnails can be displayed and printed. Its ability to display enlarged and reduced* thumbnails allows users to view large documents at a glance. A thumbnail navigator under the DocuWorks viewer enables users to view large documents that are otherwise difficult to scroll through. Also, by uniformly reducing large drawings displayed on the DocuWorks desk, drawings are easier to read and more intuitive to work with so that they can be understood at a glance, thus improving business efficiency.

*Originally, the possible percentage was fixed at 17%. In DocuWorks 7.0, this percentage can be changed from 10% to 34% in 1% increments.



DocuWorks Desk Window

Security

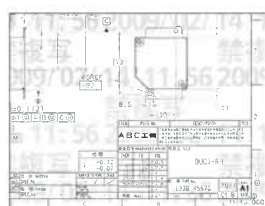
Secure password feature for printing confidential documents

Confidential documents can be kept secure simply by setting a password when sending a command to print. The password can then be entered at the control panel during printout retrieval. This ensures that information is not leaked even when someone forgets to retrieve the hardcopy print outs.

*Security printing is an optional feature

Reproduction controls for copy print outs*

Fixed and optional text such as "Do Not Copy" can be watermarked during printing of documents. When using this feature in combination with security printing, you can also print security card IDs.



Safeguard old information in the hard disk with the overwrite feature*

For security purposes, you can simply delete images that remain on the controller hard disk by overwriting them. These data include scans, printouts, copies, stamps and copy management settings. Deleting such data prevents the leakage of the information and subsequent analysis by third parties.

*Data Security is an optional feature.

Restrict users by using an IC Card for authentication via the IC Card Reader

Optional. IC Card Reader supports ReliCa*, MIFARE* eWISE^{RS}, EWISE^{HD}.



Print / Copy

Documents can be printed in various data formats and high quality copies of any document can be made.

Speedy printing for A1-sized and 5-metre long documents

DocuWide 2055 has a high performance printing engine that enables you to print 5 sheets of A1-sized documents per minute and 10 sheets of A3-sized documents per minute. In addition, the device also allows the consecutive printing of up to 99 sheets of A1-width that are up to 5 meters long.

Various data formats are supported to provide an open output environment

All DocuWide 2055 models support the HP-GL, HP-GL2/RTL, TIFF, CALS, VRF, VOGL, and FXMMR formats. Adobe® PostScript® 3™ and PDF files can also be optionally supported to create an open output environment in which data can be easily shared with other divisions. In addition to DocuWide Plot drivers and HDI™ drivers for AutoCAD, Macintosh PostScript printer drivers (Mac PPDs) are available. Mac PPDs enable the use of Adobe® PostScript® 3™ to print high-quality images, such as when creating designs and illustrations on Macintosh computers or when creating newspaper layouts.

*Mac OS X or later. To use a Mac PPD, the optional DW2055 PS/PDF is required.



Queue documents while printing sorted documents

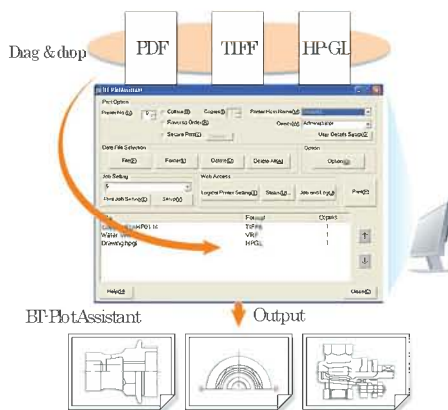
The standard DocuWide 2055MF is capable of sorting documents electronically. Its job queue feature, allows you to register the next group of documents to sort while sorted documents are being printed. This reduces time wastage and increases productivity.

High quality printing at 600 x 600 dpi

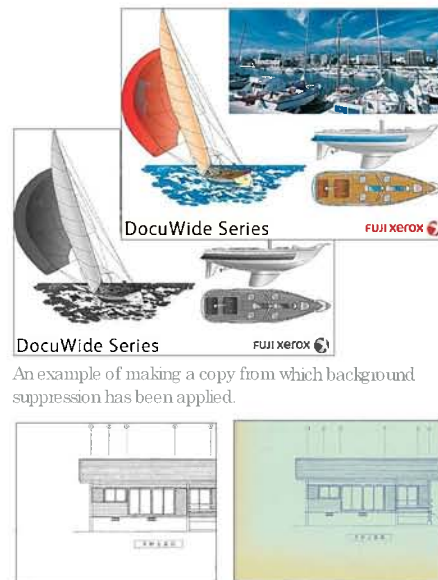
600 x 600 dpi resolution printing offers the high-quality image solution required for the various demands of an engineering firm. With a choice of six printing modes, you can make copies of an appropriate quality and keep all required diagonal, curved, thin and straight lines clear, while maintaining the halftones required in engineering materials (including text and photos) and illustrations. When copying drawings on pale blue graph paper, you can also opt to show or hide the grid, and even eliminate background suppression from blueprints. The product automatically uses information about the background suppression strength to allow you to print copies that are mostly free of such defects.

Print different formatted files with BT-Plot Assistant* in one go

BT-Plot Assistant is an optional software that allows you to print files of different formats at the same time. A simple drag-and-drop feature offers the ability for files to be printed without having to start up multiple applications.

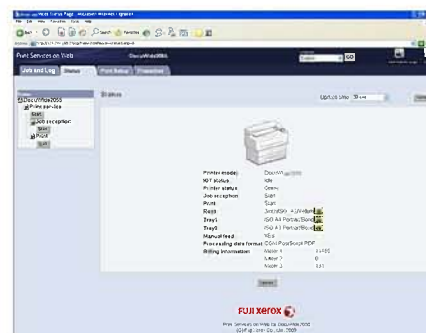


*Optional software for printing



Print Services on Web

Check the printer status easily for print, copying and scanning jobs from a client PC. Simply enter the IP address of the main unit into a web browser. This service supports languages such as English, Chinese and Japanese. As an added safety feature, only the administrator can change the settings for the main unit.



Optional

An assortment of optional products is available for scanning and printing thick and long documents.

Fuji Xerox Book Handler for thick, bound documents

With Fuji Xerox Book Handler for the scanner, you can copy bound documents as wide as A0-width paper; from 1 to 15 mm thick when open, and up to 30 mm thick when closed. The DocuWide 2055 Series supports a wide range of zooming percentages (from 25 to 400%). So you can, for example, reduce an A0-sized document to 25 percent of its original size and convert it into an A4 document.



*This photo shows the attached book handler (optional)

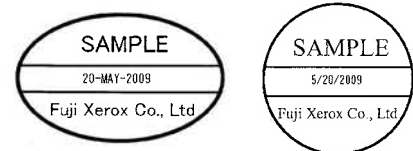
Register a stamp pattern from a PC

Using a network, you can register up to 30 stamp patterns from a PC. These stamps of up to 150 × 150 mm can be printed on documents in gray or black. Stamps support length/width auto mode and can be rotated 90 degrees when printed. The dates on stamps are automatically updated, and the format of these dates can be easily changed.

For the document number, you can choose either a predetermined administrative number or a set number,* which is assigned to each group of pages organized by the

sorter*. For date formats, alphanumeric or numeric options are available.

*These numbers are only supported for copying. The optional electronic stamp kit is required.



Main stamper specifications

Printing type	<ul style="list-style-type: none"> • Date (automatically updated by the internal clock) • A fixed 12-digit number or consecutive group-specific numbers* • Up to 30 stamps can be registered.
Printing range	From 10 × 10 mm to 150 × 150 mm
Print colours	Black or gray



Document rear exit tray



Space box



Manual feeder guide



ICCR install table

^ This table can be installed on either the front or rear of the right cover of main unit.



Front AI front exit stock

DocuWide 2055 Specifications

Item	DocuWide 2055MF		
Type	Console Type ^{*1}	Desktop Type ^{*1}	Console Type
Resolution	Data processing resolution: 600dpi x 600dpi (23.6 x 23.6 dots/mm)		N/A
	Output resolution: 600dpi x 600dpi (23.6 x 23.6 dots/mm)		
Continuous copy/printing speed	A1/portrait: 5 pages/min., A2/portrait: 6 pages/min., A2/landscape: 8 pages/min., A3/portrait: 8 pages/min., A3/landscape: 10 pages/min., A4/portrait: 10 pages/min., A4/landscape: 12 pages/min		
Paper supplying system	Standard: 1 roll feed, manual feed Optional ² : 1 roll feed, 2 cassette tray	Standard: manual feed Optional ² : 1 roll feed, 2 roll feed, 2 cassette tray	Standard: 1 roll feed, manual feed Optional ² : 1 roll feed, 2 cassette tray
Feed capacity (Media size)	3" core roll paper feeder: (Max diameter: 185mm) • ISO A/JIS A series (A1, A2, A3), JIS B series (B2), ISO B series (B2), Special A series (A1 (625mm, 620mm), A2 (440mm, 435mm), ANSI D(22"), C(17"), B(11"), Arch D(24"), C(18"), B(12"), Other (15") Manual feeder: (Cut Sheet) • A1 (Portrait), A2, A3, A4, B2, B3, B4, Special A1 (625mm, 620mm), Special A2 (440mm, 435mm) • Width: 182 to 625mm • Length: 210 to 2,000mm Cassette tray feeder: (Cut Sheet: Max 250 sheets) • A3 (portrait), A4 (portrait/landscape), B4 (Portrait)		
Paper cutting system	Standard size cutting, Synchronised cutting, Variable length cutting		
Copy media ³	Plain paper: 52.3 to 90 g/m ² , Vellum: 55 to 90 g/m ² , Film: 90µm		
Image loss	Roll/Cut paper: Lead edge 3mm, Trail edge 5mm, Right/Left edge 3mm (When the outer diameter of roll paper is less than 100mm, Lead edge 5mm and trail edge 8mm)		
Power supply	AC 220 to 240 V (+/- 10%), 10A, 50/60Hz Common, Single phase with common line		
Power consumption	Max: 1500W Low power mode: 31.2W		
Warm up time	120 seconds at room temperature 22 degrees centigrade (Humidity 55%)		
Dimensions (mm)	Standard: (1 roll model) 1150(W) x 600(D) x 726(H)	Standard: 1150(W) x 600(D) x 525 (H)	Standard: (1 roll model) 1150(W) x 600(D) x 633(H)
Width x Depth x Height	Optional: 2 roll model: 1150(W) x 600(D) x 1039(H) 1 roll / 2 tray model: 1150(W) x 600(D) x 1064(H)		Optional: 2 roll model: 1150(W) x 600(D) x 946(H) 1 roll / 2 tray model: 1150(W) x 600(D) x 971(H)
Space requirement	1,150(Width) x 600(Depth) mm		
Weight ⁴	Standard: 1 roll model: 188 kg Optional: 2 roll model: 226 kg 1 roll / 2 tray model: 220 kg	Standard: 125 kg	Standard: 1 roll model: 161 kg Optional: 2 roll model: 199 kg 1 roll / 2 tray model: 193 kg

*1 The scanner and the printer are integrated in one unit.

*2 Optional paper feeder can be selected in the following combinations:

- 1) DocuWide 2055MF model: either one of 1 roll feed or 2 cassette tray.

COPY FUNCTION	
Item	DocuWide 2055MF
Original feed system	Original transfer system
Original size	Width: 914.4 to 182mm (JIS B5 short edge) Length: 210(A4 short edge) to 5,000mm (With optional memory: 15,000*mm)
Original thickness	Front exit mode: 0.05 to 0.2mm Rear exit mode: 0.05 to 1mm (Optional: Max. 15mm flat document can be fed using optional book handler)
Original type	Text/Line, Text/Photo, Photo Printed, Photo Paper Print, Transparent, Blue Print
Scanning resolution	600 x 600dpi
Copy size	Width: 297 to 625mm Length: 210 to 5,000mm (plain paper) (Max. 15,000* mm), 210 to 2,500mm (Vellum/film)
Continuous copying	99 sheets
First copy output time	20 seconds or less (with A1 original, 100%, Fed from upper roll)
Magnification	100%: 1:1 +/- 0.4% (at room temperature 22 C and humidity 55%) Preset: 1:0.250, 1:0.353, 1:0.500, 1:0.707, 1:1.000, 1:1.414, 1:2.000 Custom setting: 1:0.250 to 1:4.000 (0.1% incremental)
Memory	Standard: 512MB (Max. 1024MB for scanning memory and Max. 1024MB for printing memory) ¹
Copy and original input functions	Auto mode (media supply, reduce/enlarge), Auto media supply, Auto reduce/enlarge, Electronic sorter, Stored programming, Electronic stamp* black/grey), Interruption, Manual feed copying, Sample copy ² , Copying from memory, Reprinting, 90 degrees rotation, Background suppression, Independent X-Y magnification, Magnification fine adjustment (0.1% increments), Copy density adjustment (9 levels), Sharpness, Scan start position adjustment, Copy position adjustment, Lead edge/trail edge margins, Mirror image, Invert image, Edge erase, Black/white threshold, Watermark

*1 Optional memory board for copy enhancement and memory (scan memory 512MB and print memory 512MB) required.

*2 Optional function.

PRINT FUNCTION	
Item	DocuWide 2055MF
Print size	Same as Copy Size ^{*1}
Continuous Printing	99 sheets
First Print Output Time	30 seconds or less (with A1 size, 1.28MB data, Fed from upper roll)
Magnification	100%: 1:1 +/- 0.4% (at room temperature 22 C and humidity 55%) (Excluding larger than A1 size)
Connectivity	Ethernet 100Base-TX / 10Base-T
Protocol	TCP/IP (LPR/FTP)
Emulation	Standard: HP-GL/HP-GL2/HP-RTL, TIFF(applicable LZW), CALS (G4), VRF, VCGI, FX-MMR Option: PostScript 3, PDF 1.3, CGM
Print drivers	32Bits Edition: Windows 2000/XP/Vista, Windows Server 2003/2008 64Bits Edition: Windows XP/Vista, Windows Server 2003/2008

*1 The maximum print length may vary depending on the software used.

SCAN FUNCTION	
Item	DocuWide 2055MF
Type	Monochrome scanner
Scanning size ¹	Width: 182 to 914.4mm Length: 210 to 5,000mm (Max. 15,000* mm)
Scanning resolution	150 x 150dpi, 200 x 200dpi, 300 x 300dpi, 400 x 400dpi, 600 x 600dpi
Scanning halftone	Black and white, Halftone, 256 levels of grey ²
Scanning mode	Text/Line, Text/Photo, Photo Printed, Photo Paper Print, Transparent, Blue Print
Scanning speed	Standard Mode: 95 mm/sec. Low Speed Mode: 47.5 mm/sec.
Scan and original input function	Stored programming, Interruption, Background suppression, Magnification fine adjustment (0.1% increments), Scan density adjustment (9 levels), Sharpness, Scan start position adjustment, Edge erase
File storing	Scan to Mailbox (Network scanning) (Max. 50 Mailboxes available)
Connectivity	Ethernet 100Base-TX / 10Base-T
Protocol	TCP/IP (HTTP)
File format	Format: TIFF, PDF, CALS Compression Type: MMR, JPEG (for greyscale scanning)
Driver	Wide format network TWAIN source

*1 The maximum scan length may vary depending on the software used.

*2 Optional memory board for copy enhancement and memory (scan memory 512MB and print memory 512MB) required.

*3 The maximum scanning length in 256 levels grey depends on the scanning resolution selected:

Standard (512MB): 5,000mm (150dpi/200dpi/300dpi), 4159.25mm (400dpi), 2772.83mm (600dpi)
With optional scan memory (1GB): 11091.33mm (150dpi), 8318.5mm (200dpi), 5545.66 mm (300dpi), 4159.25mm (400dpi), 2772.83mm (600dpi)

- The DocuWide 2055MF conforms to the Evaluation Criteria and Considerations for Copiers in the Law on Promoting Green Purchasing, enacted to promote the use of goods and services that help reduce environmental impact.
- Fuji Xerox actively promotes recycling, recognising the importance of environment protection. The DocuWide 2055MF uses recycled parts that conform to Fuji Xerox's original quality standard.

- As a participating member of the International Energy Star Program, DocuWide 2055MF are determined to have met the standards for International Energy Star Program products.



For more information or detailed product specifications, call or visit us at

Fuji Xerox Asia Pacific Pte. Ltd.

No. 10, Jalan Bersatu 13/4, 46200 Petaling Jaya, Selangor, Malaysia.

Tel. 03 7882 2888

<http://www.fujixerox.com.my>