

## DocuWide 3035

Item	Description
Type	Console Type
Resolution	Data processing resolution: 600 x 600 dpi Output resolution: 600 x 600 dpi
Continuous copy / printing speed	<b>DocuWide 3035MF 2ppm model:</b> A0: 2 sheets/minute, A1: 3 sheets/minute, A1 (landscape): 4 sheets/minute, A2: 4 sheets/minute, A2 (landscape): 5 sheets/minute, A3: 5 sheets/minute, A3 (landscape): 7 sheets/minute, A4 (landscape): 9 sheets/minute <b>DocuWide 3035MF 3ppm model:</b> A0: 3 sheets/minute, A1: 4 sheets/minute, A1 (landscape): 5 sheets/minute, A2: 5 sheets/minute, A2 (landscape): 7 sheets/minute, A3: 7 sheets/minute, A3 (landscape): 9 sheets/minute, A4 (landscape): 11 sheets/minute • The speed may be reduced due to the image quality adjustment. • The performance may be reduced depending on the paper type.
Paper supplying system	2 Roll unit, Manual Feed
Paper feed capacity	<b>Roll paper feed</b> Roll media x 2 A0, A1, A2, A3, JIS B1, JIS B2, JIS B3, ISO B1, ISO B2, ISO B3, Special A0 (880mm/860mm), Special A1 (620mm/625mm), Special A2 (440mm/435mm), Special A3 (310mm), 36", 30", 24", 22", 18", 17", 15", 12", 11" Width: 279.4 - 914.4 mm Outside diameter of the roll: 185 mm or less <b>Manual feed</b> Manual feed: Cut Sheet A0, A1, A2, A3, A4, JIS B1, JIS B2, JIS B3, JIS B4, ISO B1, ISO B2, ISO B3, ISO B4, Special A0 (880mm/860mm), Special A1 (620mm/625mm), Special A2 (440mm/435mm), Special A3 (310mm), 36", 34", 30", 24", 22", 18", 17", 15", 12", 11", 9", 8.5" Width: 210 - 914.4 mm Length: 210 - 2,000 mm
Paper cutting system	Standard size cut, synchronized cut, variable length cut
Copy media	<b>Roll paper feed</b> Plain paper: 60 - 110 g/m <sup>2</sup> , Tracing paper: 90 - 112 g/m <sup>2</sup> , Film: 75 - 100 um <b>Manual feed</b> Plain paper: 60 - 110 g/m <sup>2</sup> , Tracing paper: 90 - 112 g/m <sup>2</sup> , Film: 75 - 100 um
Image loss width	<b>Roll paper</b> When outside diameter of the roll is 100 mm or more: Lead edge 5 mm or less, Trail edge 5 mm or less, Right&Left 5 mm or less When outside diameter of the roll is less than 100 mm: Lead edge 8 mm or less, Trail edge 8 mm or less, Right&Left 5 mm or less <b>Cut sheet</b> Lead edge 5 mm or less, Trail edge 5 mm or less, Right&Left 5 mm or less
Power source	AC 220 - 240 V, -10 to 6%, 10A for both 50/60 Hz
Power consumption	Maximum: 1.5kW, Sleep mode: 13W
Warm-up time	135 seconds or less (when the room temperature is at 22°C and the humidity is at 55%)
Dimensions	Width 1,410 x depth 710 x height 1,420 mm (with the control panel) Width 1,310 x depth 710 x height 1,160 mm (without the control panel)
Floor space	Standard configuration: Width 1,310 x depth 710 mm When the original stock flat tray is installed: Width 1,310 x depth 1,510 mm
Weight	260 kg • The weight is without any toner and paper.

<sup>1</sup> It is encouraged to use paper recommended by Fuji Xerox. Printing may not be performed correctly depending on the use conditions.

## Copy Feature

Item	Description
Original Feed System	Original transfer type
Original Size	Maximum width 914.4 mm, minimum width 176 mm Maximum length 15,000 mm, minimum length 210 mm
Original Thickness	When ejecting frontward (when the U-turn output guide is installed): 0.05 - 0.2 mm When ejecting rearward: 0.05 - 5 mm <sup>1</sup>
Original Type	Text & Line, Photo & Text, Printed Original, Photograph, Blueprint, Transparent, Uneven-Toned Background
Scan Resolution	600x600dpi
Copy (Media) Size	Plain paper: Width: 210 - 914.4 mm, Length: 210 - 5,000 mm Tracing paper/Film: Width: 210 - 914.4 mm, Length: 210 - 2,500 mm
Continuous Copy Pages	Continuous Copy Pages 99 sheets
First Copy Time	35 seconds or less (with A0 size original, 100% copy, upper roll 1)
Magnification	Same magnification 1:1 +/- 0.4% (when the room temperature is at 22°C and the humidity is at 55%) Reduce/enlarge presets 1:0.250, 1:0.353, 1:0.500, 1:0.707, 1:1.414, 1:2.000 Custom reduction/enlargement ratios 1:0.250 - 1:4.000 (in 0.1 % increments)
Memory capacity	Standard: 1GB, Maximum: 1.5GB (when the Add System Memory is installed)
Copy/Original Input Feature	Manual feed copy, copy from memory (additional copy) <sup>1</sup> , interrupt mode copy, Auto mode (auto selection of original orientation, auto paper select, auto magnification), manual mode, reduce/enlarge, paper supply selection, paper cut mode, original type, lighten/darken, sharpness, contrast, background suppression, threshold sort, adjust color density <sup>1</sup> , original width, image shift, scan start position, edge erase, mirror image, invert image, scan speed, image rotation, collation (uncollated/collated), lead & trail margins, sample copy <sup>1</sup>

<sup>1</sup> It is possible to scan a flat and hard original (styrene board, heavy paper) whose thickness exceeds 0.2 mm, up to 1 mm thick. The flat and hard original must be supported by your hand while scanning. However, the document transportation and the output image quality is out of guarantee. When scanning a thick original whose thickness is between 1 and 5 mm, the optional Heavy Document KIT is required.

<sup>1</sup> The optional Color Board & Page Memory for IIT is required.

\* If the storage medium (hard disk) of the machine fails, all its data, including any received data, stored data, and registered configurations, may be lost. Fuji Xerox shall not be held responsible for any direct or indirect damages arising from or caused by such data loss.

\* Repair components will be available for at least 7 years after the product is no longer manufactured.

Descriptions in this material, product specifications and / or appearances are subject to change without prior notice due to improvements. Please note that the product colour appears differently from the actual colour as a result of properties of papers or printing ink. Other company names or product names are registered trademarks or trademarks of each company.

**For Your Safe Use**  
Before using the product, read the Instruction Manual carefully for proper use.  
Use the product with an appropriate adequate power source and voltage displayed. Be sure to establish a ground.  
In the case of a failure or short circuit, an electric shock may result.

## Print Feature

Item	Description
Print (Media) Size	Same as the copy (media) size
Continuous Print Pages	99 sheets
First Print Time	40 seconds or less (with A0 size original, 1.28 MB data, upper roll 1)
Magnification Accuracy	100 +/- 0.4 % (except for larger than A0 size) (when the room temperature is at 22°C and the humidity is at 55%)
Page Description Language	Optional: Adobe® PostScript® 3™
Supported Protocol	TCP/IP (LPR, FTP)
Supported Operating System <sup>1</sup>	Microsoft® Windows® XP Microsoft® Windows Server® 2003 Microsoft® Windows Vista® Microsoft® Windows Server® 2008 Microsoft® Windows® 7 Microsoft® Windows® XP x64 Edition Microsoft® Windows Server® 2003 x64 Editions Microsoft® Windows Vista® 64 bit Microsoft® Windows Server® 2008 (x64) Microsoft® Windows Server® 2008 R2 (x64) Microsoft® Windows® 7 64 bit Mac OS® X v10.5 Leopard Mac OS® X v10.6 Snow Leopard Mac OS® X v10.7 Lion
Emulation	HP-GL series: HP-GL, HP-GL/2, HP-RTL (Compliant with HP Designjet 1050c) VERSATEC series: VRF, VGL, FX-MMR Others: TIFF, JFIF (JPEG), CALS, CGM <sup>1</sup> , Adobe® PostScript® 3™, PDF <sup>1</sup>
Interface	Ethernet (1000BASE-T/100BASE-TX/10BASE-T)

<sup>1</sup> Optional  
<sup>1</sup> For the latest supported operating systems, please visit the Fuji Xerox home page.  
<sup>1</sup> When printing from Mac OS, the PDF/Adobe PostScript 3 kit (optional) must be installed on the machine.

## Scan Feature

Item	Description
Type	Standard: Monochrome scanner Optional: Colour scanner
Scan Size	Width 176 - 914.4 mm, Length 210 - 15,000 mm
Scan Resolution	600 x 600 dpi, 400 x 400 dpi, 300 x 300 dpi, 200 x 200 dpi, 150 x 150 dpi
Scanning Halftone	Full colour <sup>1</sup> , 256 levels of grey <sup>1</sup> , Black and white (binary), pseudo grey scale (binary)
Scan Mode	Text & Line, Photo & Text, Printed Original, Photograph, Blueprint, Transparent, Uneven-Toned Background
Original Scanning Speed	Full colour: Mid speed - 67.6 mm/sec (with resolution of 300 dpi or less), very low speed - 33.8 mm/sec (with resolution of 400 dpi or more) Non full colour: Very high speed - 203.2 mm/sec (with resolution of 300 dpi or less), high speed - 101.6 mm/sec, low speed 50.8 mm/sec
Output Format	Transfer format: TIFF, PDF, DocuWorks, JPEG Compression method: MMR (for black and white scanning), JPEG (for full colour/grey scale scanning)
Scan to Folder	Interface: Ethernet (1000BASE-T/100BASE-TX/10BASE-T) Supported Protocol: TCP/IP, HTTP Driver: Network Scanner Utility 3 Supported Operating System <sup>1</sup> : Microsoft® Windows® XP, Microsoft® Windows Server® 2003, Microsoft® Windows Vista®, Microsoft® Windows Server® 2008, Microsoft® Windows® 7, Microsoft® Windows® XP x64 Edition, Microsoft® Windows Server® 2003 x64 Editions, Microsoft® Windows Vista® 64 bit, Microsoft® Windows Server® 2008 (x64), Microsoft® Windows Server® 2008 R2 (x64), Microsoft® Windows® 7 64 bit
Scan to PC	Interface: Ethernet (1000BASE-T/100BASE-TX/10BASE-T) Supported Protocol: TCP/IP SMB Supported Operating System: Microsoft® Windows® XP, Microsoft® Windows Server® 2003, Microsoft® Windows Vista®, Microsoft® Windows Server® 2008, Microsoft® Windows® 7
Printer Transfer	Interface: Ethernet (1000BASE-T/100BASE-TX/10BASE-T) Supported Protocol: TCP/IP LPR
Direct Scan	Interface: USB 2.0

<sup>1</sup> The optional Color Board & Page Memory for IIT is required.  
<sup>1</sup> For the latest supported operating systems, please visit the Fuji Xerox home page.



**Reproduction Prohibitions** Please note that reproduction of the following is prohibited by law: Domestic and overseas bank notes and coins, government-issued securities, national bonds and local bond certificates. Unused postage stamps and post cards. Certificate stamps stipulated by law. The reproduction of works for copyright purposes (literary works, musical works, paintings, engravings, maps, cinematographic works, photographic works, etc.) is prohibited except when they are reproduced personally, at home or within limited range according to the above. This product is equipped with an anti-counterfeit feature. This feature is not intended to prevent illegal reproduction. Be extremely careful about the management of equipment used.

## DocuWide 3035



# DocuWide 3035

## A0-Capable Digital Multifunction Device

### Achieving efficiency through simplicity



For more information or detailed product specifications, call or visit us at

**FUJI XEROX ASIA PACIFIC PTE LTD Malaysia Operations (993478A)**

HQ: 10, Jalan Bersatu 13/4, 46200 Petaling Jaya, Selangor. Tel: 03-7882 2888 Hunting Line: 1-300-88-5880

BRANCHES Penang: 19-G-2, B Tower, Bayan Point, Medan Kampung Relau, 11900 Pulau Pinang. Tel: 04-643 5000 Fax: 04-644 4677 Johor Bahru: No. 21 & 23, Jalan Setia Tropika 1/28, Taman Setia Tropika, 81200 Kempas, Johor Bahru. Tel: 07-238 7868 Fax: 07-238 2678, 07-238 2178 Melaka: 43 & 45, Jalan Melaka Raya 13, Taman Melaka Raya, 75000 Melaka. Tel: 06-281 0466 Fax: 06-281 0408 Kota Kinabalu: Lot No. P1/G/42/Grd, 1st, 2nd, 3rd & 5th Floor, KK Time Square, 88100 Kota Kinabalu, Sabah. Tel: 088-486 888 Fax: 088-486 668 Kuching: 199A-201, Lot 3049 & 3050, Eastmoore Centre, 2 1/2 Mile Jalan Rock, 93200 Kuching, Sarawak. Tel: 082-240 633, 082-254 633 Fax: 082-418 733

<http://www.fujixerox.com.my>

October 2012

XEROX®, XEROX and Design® and FreeFlow® are trademarks of Xerox Corporation in the United States and/or other countries.

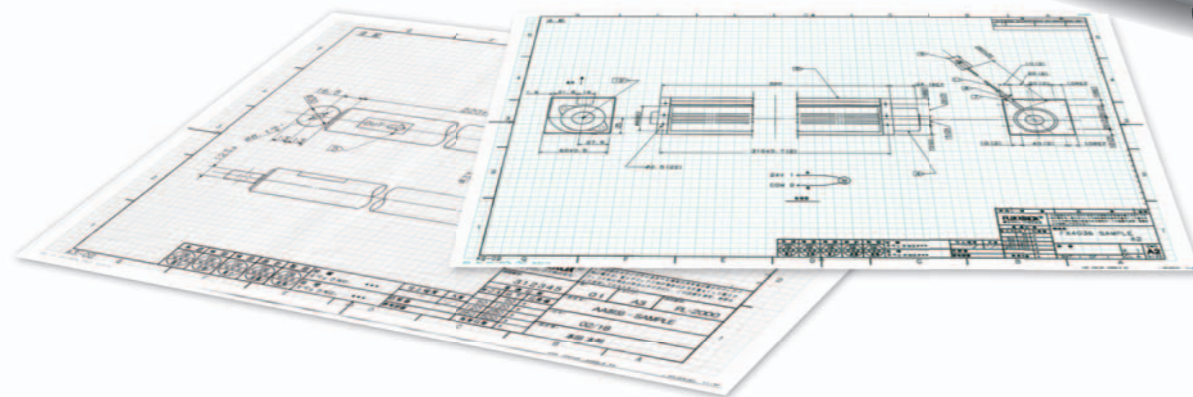
# Advanced functions more accessible than ever

The DocuWide 3035 is equipped with a colour scanner for accurately relaying the intent of engineers.\* This compact digital multifunction device is capable of A0-size output while offering the ease of use, functionality, and productivity of office multifunction devices.



## DocuWide 3035

- Copier/Scanner\*/Printer
- A0-size output  
3ppm model:  
3 sheets per minute  
2ppm model:  
2 sheets per minute
- Continuous output: 99 sheets
- Max. length: 5 m (plain paper)
- Max. width: 914 mm (36 inches)
- Paper supply system: 2 rolls of paper & manual paper feed

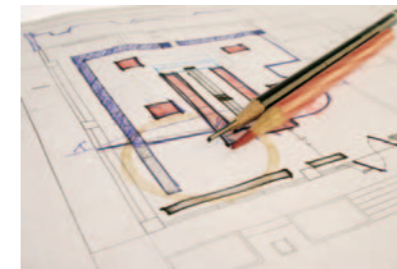


\* Standard model includes a monochrome scanner, Optional Color Board & Page Memory for IIT required for color scanning.

## Digitization of large-format colour drawings

With the DocuWide 3035, you can create high resolution 600 dpi full-colour scans\* of large documents (in A0-size) such as presentation documents, coloured blueprints, and drawings marked with corrections or work instructions. By digitizing your documents and keeping electronic records, you create an environment where management is made more efficient.

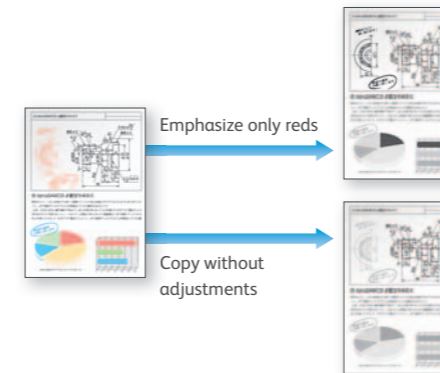
\* Standard model includes a monochrome scanner. Optional Color Board & Page Memory for IIT is required for color scanning.



## Colour density adjustment using colour scanner characteristics

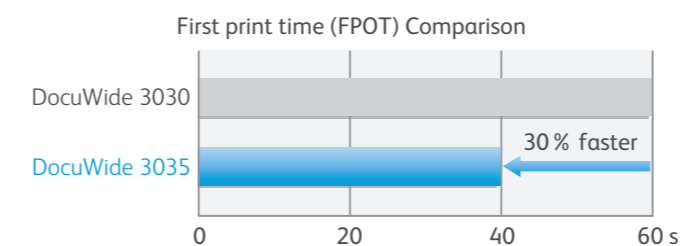
The colour density adjustment feature gives you the flexibility to determine your scan preference such as accentuating signatures and seals, emphasizing on the density of red markings, and turning off specific colours.

\* The optional Color Board & Page Memory for IIT is required.



## High performance

With a first print/copy output time about 30% faster than existing devices and output speed of three A0-size sheets per minute for both copying and printing, the DocuWide 3035 won't keep you waiting even when outputting multiple-page documents. What's more, its high performance does not come at the sacrifice of energy saving and quiet operation.



## Digitization of drawings

- Optional colour scanner available
- Save your scanned documents to a PC
- Simultaneously save and print files with the Multi Send function

## Productivity

- Fast copy and print speed of 3 A0-size sheets per minute\*
- High-speed scanning at 203.2 mm/s\* in monochrome and 67.6 mm/s\* in colour  
\* At scanning resolution of 300 dpi or lower.
- Support of scanning while printing

## High quality

- High-quality image input and output at 600 dpi × 600 dpi

## Operability

- Compact design & familiar interface allowing side-by-side use with multifunction office devices
- User-friendly 10.4-inch colour touch screen for easy viewing
- Easy paper loading

## Security

- Security Print function for outputting confidential documents
- Private Print function for preventing information leaks
- Passwords for scanned documents can be set on the main unit
- Authentication and user restrictions, including IC card use, are supported

## Latest network environment

- IPv6 ready
- Ethernet 1000BASE-T ready

## Environmental, energy saving and safety standards

- Designed for low power consumption, low noise and superior safety
- Complies with Act on Promoting Green Purchasing
- Complies with International Energy Star Program



# Operability

Front-loading, front-output compact body and user-friendly operation



## Compact design & familiar interface allowing side-by-side use with multifunction office devices

The DocuWide 3035 is designed to suit any office. In addition to a compact design and quiet operation, it offers a familiar interface similar to that of multifunction office devices.

## 10.4-inch colour touch screen

The large colour touch screen offers superb viewability and intuitive operation, providing a work environment easy to understand for anyone. The control panel can be tilted up and down and swiveled left and right.

## Job memory

This feature allows you to save to memory up to 40 settings each for frequently used copy and scan functions.

## Easy paper loading

The DocuWide 3035 is equipped with an auto loading feature, which enables roll paper to be fed automatically and effortlessly by positioning the paper's edge in place. When a print job is completed, the machine automatically cuts the paper. The DocuWide 3035's two-roll capacity allows you to install paper of two different sizes and/or two different types such as regular paper, tracing paper and film, at the same time.



## Auto mode for easy copying

In the Auto mode, the DocuWide 3035 automatically selects the most suitable paper type and reduce/enlarge ratio according to the original size for simple and efficient copying. Manual mode is also available to enable you to configure the settings as you prefer.



Auto mode

## Easily perform output to paper that has not been loaded

When paper of the specified output size has run out, or if no appropriate size of paper is loaded on the device, you can continue printing by alternatively specifying manual feed, to minimize disruption to your print job. Manual feed is also convenient for outputting paper sizes that are not frequently used.

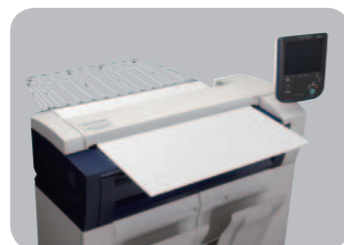
# Options



Scanner Catch Tray



Print Catch Tray (option)



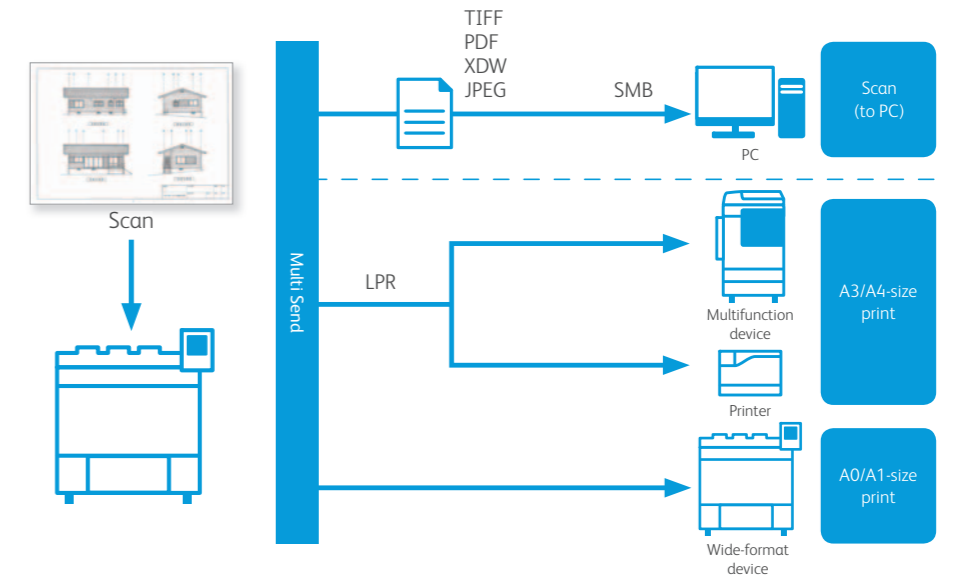
Heavy Document Kit

# Scan

Quickly scan hand-drawn drawings and documents at optimum resolution and save the data you want on your network.

## Multi Send function for concurrent file saving and printing

This function allows you to simultaneously save a file to a PC on your network and print it out just by scanning an original. Moreover, if other multifunction devices or printers exist on the same network, you can also select those devices as output destinations. This allows you to perform selective output of large sizes on wide-format devices, and small sizes on office multifunction devices.



## Push scan (data saved to PC)

Transfer of scanned documents to a PC via the network (SMB protocol) can be specified on the touch screen.

## Speedy digitization even of hand-drawn drawings and documents

The DocuWide 3035 offers high-speed scanning at 203.2 mm/s<sup>1</sup> in monochrome and 67.6 mm/s<sup>2</sup> in colour, making short work of even sizeable scan jobs and allowing you to quickly digitize originals such as hand-drawn drawings and documents with high image quality.

<sup>1</sup> At scanning resolution of 300 dpi or lower

<sup>2</sup> Requires the optional Color Board & Page Memory for IIT

## Concurrent scanning and printing

The DocuWide 3035 allows you to work more efficiently by enabling you to begin scanning the next document without having to wait for your print jobs to be completed.

\* The optional Color Board & Page Memory for IIT is required.

## Store to Folder

You can save scanned documents to the machine's folder and then import them to PCs on the network.

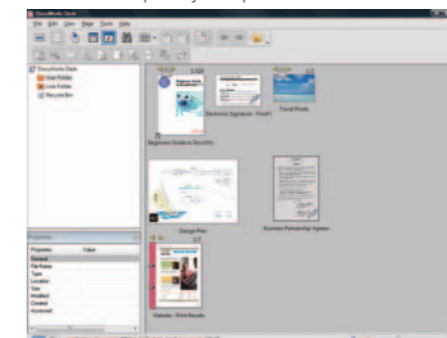
### Importing method

CentreWare Internet Services	Importing using a web browser
TWAIN compatible application	Importing from an application such as DocuWorks
Folder Viewer 3	Importing to PC without using an application

## DocuWorks for managing drawings and other documents

Efficiently manage reports and even large drawings on DocuWorks desk. You can easily manage and share information created in various office settings. With DocuWorks, you can handle electronic documents in the same way as paper ones, without ever being aware of the barriers created by different file formats.

\* DocuWorks is separately sold optional software.



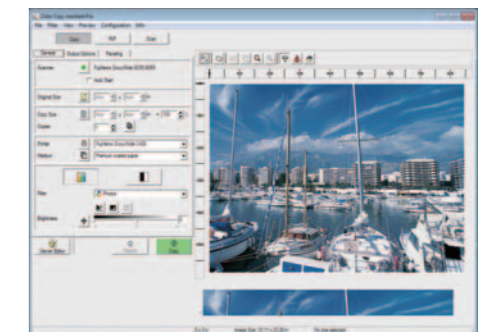
DocuWorks Desk screen

## Color Copies with Color Copy Assistant

Using Color Copy Assistant<sup>\*1</sup>, you can import colour scan data<sup>\*2</sup> to a PC connected to the machine via USB and print it out using a colour inkjet printer, etc.

<sup>1</sup> Option

<sup>2</sup> Color Board & Page Memory for IIT is required for colour scanning.



Color Copy Assistant screen

# Copy/ Print

Easily get the desired results.

## High-quality input and output at 600 × 600 dpi

You can make copies and printouts that sharply reproduce the diagonals, curves and thin straight lines required in drawings, while maintaining the halftones required in engineering materials, including text, photos and illustrations.

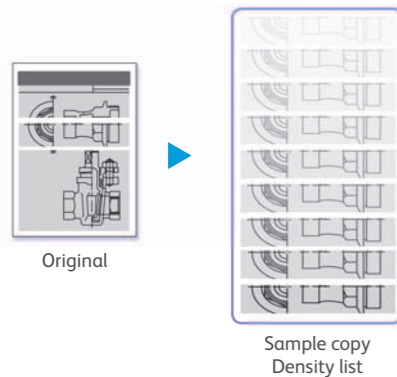
## Optimum image quality for each original

You can make beautiful copies of documents whose background colour density has changed, including text manuscripts, drawings, photos, blueprints, transparencies, and cut-and-pastes, using the image quality best suited for each document. For example, when making a copy of a blueprint, you can remove the base colour if it is bothersome for a more pleasing result.

## Sample Copy for the best result

You can copy part of the original as a sample to determine which settings will produce the best result. Any area can be specified as the sample, and you can vary the settings, including the reduce/enlarge ratio, density level, and original type, for the specified area.

\* The optional Color Board & Page Memory for IIT is required.



## Copy from Memory to make copies with different settings without reloading

You can print additional copies of the last copied document while changing settings without having to copy it again.

\* The optional Color Board & Page Memory for IIT is required.



## Reduce/enlarge ratio from 25% to 400% A4 to A0, A0 to A4, etc.

The reduce/enlarge ratio when copying can be finely adjusted in 0.1% increments, and the vertical and horizontal reduce/enlarge ratios can be independently specified.

## 3 paper cut modes for roll paper

The cut mode can be specified according to the application, with a choice between standard size cut, synchronized cut for cutting the paper according to the length of the document, and variable length cut for cutting the paper at an arbitrary length\*.

\* The arbitrary length can be chosen between 210 mm and 5,000 mm.

## Mac OS output supported

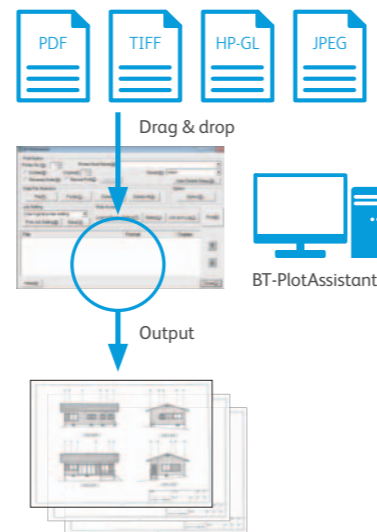
You can output designs, illustrations, newspaper camera ready copy, and so on, in high quality.

\* The optional Adobe PDF/PostScript 3 Kit is required. Mac PPD supports Mac OS X v10.5/10.6/10.7.

## Print different formatted files with BT-Plot Assistant in one go

BT-Plot Assistant\* is software that allows you to print files of different formats at the same time. A simple drag-and-drop feature offers the ability for files to be printed without having to start up multiple applications.

\* Option



## Check the output status with a web browser

You can check the set paper size or status of a print job from a web browser on a client PC.



CentreWare Internet Services Screen

# Security

Prevent information leaks.

## Security Print

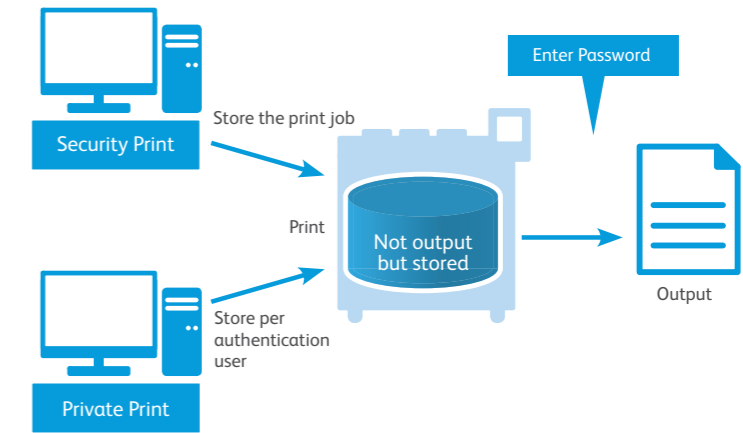
Documents not meant to be seen by third parties, confidential documents and other sensitive materials can be stored temporarily and printed by entering a password.

## Private Print

Print jobs can be stored in the machine and output by the user following authentication.

\* Operation in Authentication mode is required.

\* Private Print cannot be used in combination with Security Print.



## Enhance up security with encryption, overwriting, and batch deletion of data stored on the hard disk

The risk of information leaks from the machine can be minimised by encrypting or overwriting the data stored on the hard disk. Batch deletion of the stored data is also possible.

## Scanned documents can be password protected on the machine

Scanned documents saved as DocuWorks documents or PDF files can be protected by setting a password on the machine. Once protected, a file cannot be opened without inputting its password, and its printing and transfer can be restricted.

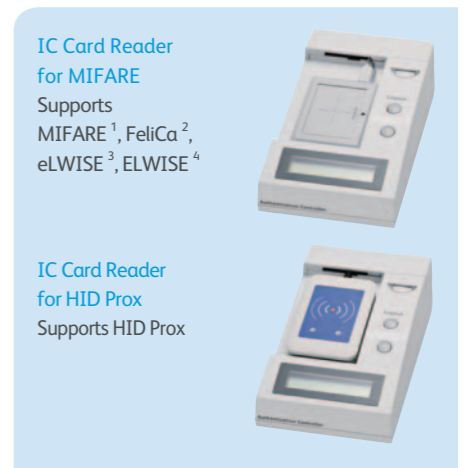
\* To open an encrypted DocuWorks document, DocuWorks Viewer Light Ver. 5.0 or later is required. For encrypted PDF files, Adobe Acrobat 7.0 or later is required.

## Authentication and user restrictions with IC cards are possible with IC Card Reader\*

Unauthorised use or access of the machine can be prevented through the use of the authentication function by simply adding the optional IC Card Reader.

Further more, the user information managed by the Active Directory® server can be used for user authentication during machine use.

\* Option



<sup>1</sup> Non-contact type IC card developed by NPX Semiconductors N.V. Can read the UID of MIFARE.

<sup>2</sup> Non-contact type IC card developed by Sony Corporation

<sup>3</sup> Non-contact type IC card developed by NTT Communications Corporation. Can read the .Com-ID of eLWIS.

<sup>4</sup> Non-contact type IC card developed by NTT Laboratories. Can read card serial IDs issued by NTT Card Solution Corp.