

ApeosPort-IV

C5575

C4475

C3375

C3373

C2275



ApeosPort-IV

C5575 / C4475 / C3375 / C3373 / C2275

Digital Colour Multifunction Device

A new way to work effectively



ApeosPort-IV C5575 Series Multifunction Devices

We all want to help protect the environment. It makes sense to do everything we can to minimise our carbon footprint and reduce the waste we create while we work.

It makes good business sense too. By cutting out waste and using less energy we can also improve the performance – and profits – of our business. It pays to work smarter and cleaner, yet more efficiently than ever before.

The ApeosPort-IV C5575/C4475/C3375/C3373/C2275 series features an open architecture technology that enables personalised and customised document management solutions you can access right from the device's touch screen. These applications can leverage your existing infrastructure and databases, and meet your specific business challenges.





Environmental performance combined with stunning print performance

Fuji Xerox has combined improved print performance with environmental protection by developing groundbreaking new technologies to further improve the environmental performance of its new multifunction devices. At the same time we've made sure that users can continue to enjoy effortless operations. These developments bring together new technology and services for superior environmental performance alongside user friendliness and ultimate productivity.

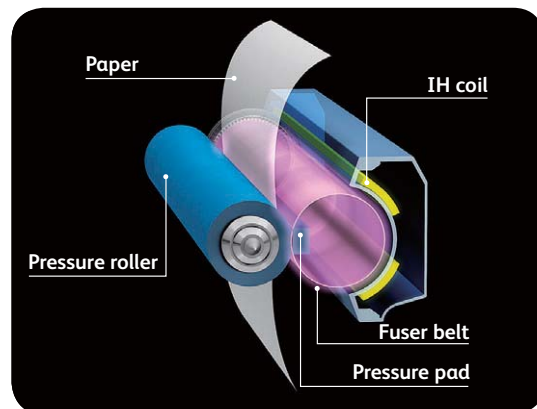
The multifunction device automatically detects the user. Fuji Xerox has introduced its revolutionary "Smart WelcomEyes" technology* to the ApeosPort-IV C5575 series multifunction devices. The device is able to detect when an operator is approaching and automatically recovers from sleep mode, as if to welcome them. This clever technology eliminates unnecessary operational steps and the operator can use the device immediately. It also saves energy while the operator achieves new productivity levels, without even noticing.

* Fuji Xerox is applying for a trademark registration of Smart WelcomEyes.

Smart Energy Management Technology. Our innovative Smart Energy Management Technology better manages energy usage by only using what is necessary, when it's necessary. This enables the device to activate only the modules required by the user, saving energy and reducing CO₂ emissions. What's more, offices will enjoy a much quieter environment.

From sleep mode to full operation in 2 seconds – no need to wait! When the ApeosPort-IV C5575/C4475/C3375/C3373/C2275 multifunction device recovers from sleep mode, it takes only 2 seconds to wake up and start working. Due to Smart Energy Saving they experience no real waiting time. Even if the device is always set to sleep mode for low power consumption, users don't experience any delays in set-up and operation.

Induction Heating Fusing Technology incorporates a thin, non-magnetic metal as the heating layer inside the fuser belt which enables greater energy efficiency. With this technology, the fusing unit does not require pre-heating and doesn't consume power when the machine is in standby mode. As a result, a fusing unit with the quickest start-up time of only 3 seconds providing Fuji Xerox with a tremendous competitive edge.

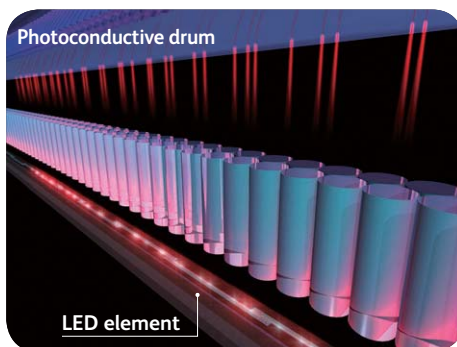


Promoting the adoption of biomass plastic. Fuji Xerox is proud to promote the use of biomass plastics, comprising more than 50 % of plant-derived constituent (corn), used in specific device parts. This helps to reduce the levels of CO₂ emissions.

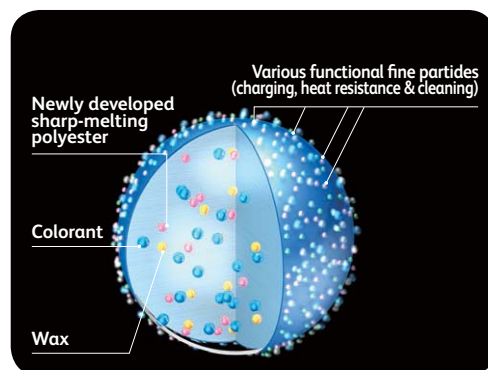
Fuji Xerox is the first in the industry to develop inedible, woody biomass plastic material and components in our devices.

LED Scanner. The LED technology used as the light source for image scanning consumes less energy and gives you ultra-quiet operation.

Fuji Xerox has developed a high-precision, LED print head technology “DELICIS” (Digitally Enhanced Lighting Control Imaging System) that achieves an output resolution of 1,200 x 2,400 dpi that is equivalent or even superior to that produced by a conventional laser raster output scanner (ROS) system. LED print head technology makes it possible to build even smaller devices and reduces power consumption.



EA-Eco Toner. This Emulsion Aggregation (EA) Ultra Low-Melt toner achieves a fusing temperature more than 20°C lower than conventional EA toner, reducing power consumption during fusion, as well as achieving a brilliant glossy output even on ordinary paper.



Advanced functions, yet even easier to use

The ApeosPort-IV C5575/C4475/C3375/C3373/C2275 is the perfect device to be used as the “nerve centre” of your business. It works effortlessly as the central device in an office to provide stable, trouble-free productivity and excellent image quality for every business requirement.

Dramatically increase your workflow efficiency. Cutting edge scanning functionality opens the door to better ways of getting work done. Scan to Email quickly distributes documents to multiple email addresses. Store files on the device, or in a personal directory. You can also scan documents to network folders, FTP sites and fax servers right from the device.

Scan to Folder feature allows you to scan to a folder on the printer's hard drive to reprint on demand or retrieve via a web browser. Documents stored on the hard drive are displayed as thumbnails and up-close previews on the device touchscreen.

Easy archiving, organising and searching. With scan to searchable PDF*, you can create a fully text-searchable file and integrate it into your workflow process in one easy step.

Significantly smaller scan files. The latest scan-export compression technologies reduce traffic on the network and accelerate document delivery.

Introduce new workflows or automate repetitive processes within the office environment by automatically routing documents to predefined locations at the touch of a button.

Document Conversion to Word/Excel® formats for easy editing. The ApeosPort-IV C5575 series multifunction devices can detect text, tables and pictures in scanned images and convert them into Microsoft Word and Excel documents so you can edit them easily*. Paper documents and original data that have been lost can be regained and easily used, saving time and hassle for users by eliminating rekeying chores.

* The optional Advanced Scan Kit is required.



①
Optional
Wing Table



②
Four 500-sheet paper trays
adjustable up to A3

③
Optional integrated
stapler finisher

High-speed scanning delivers maximum productivity.

The ApeosPort-IV C5575/C4475 multifunction devices are capable of scanning both sides of a document in a single pass, at a maximum rate of 140 images per minute for both colour and black-and-white documents. The lightweight duplex automatic document feeder can also hold a maximum of 130 sheets.

* Applicable only with the Duplex Automatic Document Feeder B1-PC

Low colour documents can be compressed as small as monochrome documents. Documents with a relatively small amount of colour, such as documents with corrections, stamps and markings in red can be compressed by using the high compression function when scanning.

Walk-up simplicity. Print from and scan to any USB memory device for faster document delivery when you're not at your computer.



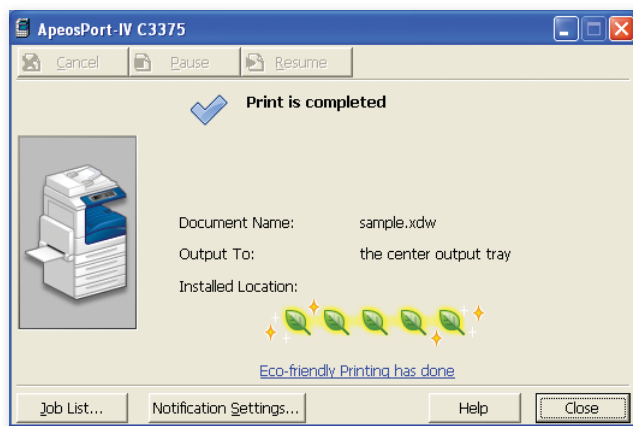
4 Choose basic features like staple and hole punch (optional), or advanced capabilities to produce saddle-stitched booklets (unfolded)

5 2,030-sheet A4 High Capacity Feeder (optional) can increase total capacity to 4,120 sheets

6 This high performance finisher features automatic stapling, hole-punching, folding and booklet making.

High resolution output – a genuine 2,400 dpi. The ApeosPort-IV C5575/C4475/C3375/C3373/C2275 can produce high resolution output of 2,400 dpi. Users can tailor the final output settings of their documents by selecting “standard”, “photo”, “presentation”, “design”, “CAD” or “POP” to suit the image type they require, as well as setting the colour balance or choosing an ICC profile.

Users can analyse the environmental impact of their print operations by checking the ecological rating display on the document monitor*. This function displays up to five leaves to indicate how environmentally friendly the print settings are.



* The document monitor is software that is installed on the computer. It can be downloaded from the Fuji Xerox website.

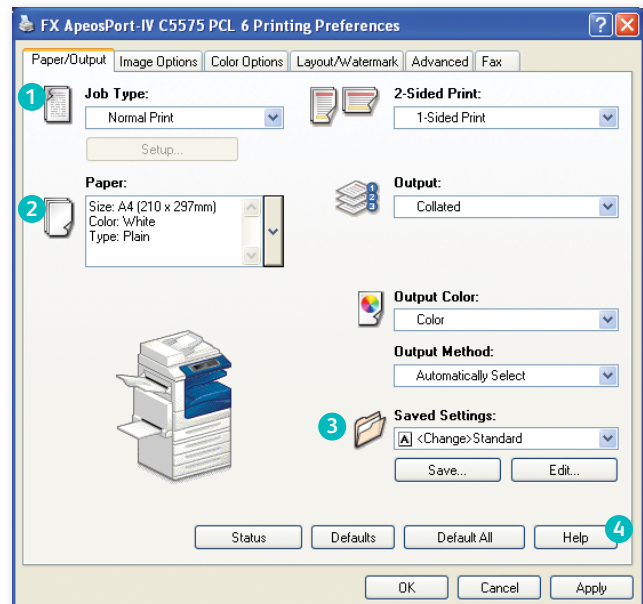
To speed up copying and faxing an express (simple) copy and fax feature is available that displays only the basic settings. This is provided in addition to the normal features.

A truly universal print driver. Xerox Global Print Driver® lets IT administrators install, upgrade and manage Fuji Xerox and non-Fuji Xerox devices from a single driver. It provides a consistent, easy-to-use interface for end-users, reducing the number of support calls, and simplifying print services management.

Customise your print driver settings for economy and efficiency. For example, set two-sided printing or choose N-up for printing multiple pages on a single sheet as your default.

WHQL certified PCL and PostScript print drivers

provide a consistent, easy-to-use interface for end-users that can greatly simplify your printing operations.



1

Drop down menu for secure print, fax, save to mailbox and more

2

Paper selection summary window

3

Favourite print settings

4

Help function for feature descriptions and driver assistance

Save time by storing the settings of frequently printed documents as favourites in your print driver. Settings include paper sizes, covers, duplexing, finishing and more.

Forwarding received fax documents. When faxes are received they can be stored in the device folders, and any required documents can be printed after checking thumbnail previews. This cuts waste and reduces paper use. Documents received in a folder can also be forwarded by fax, printed, and sent via e-mail, FTP, or SMB.

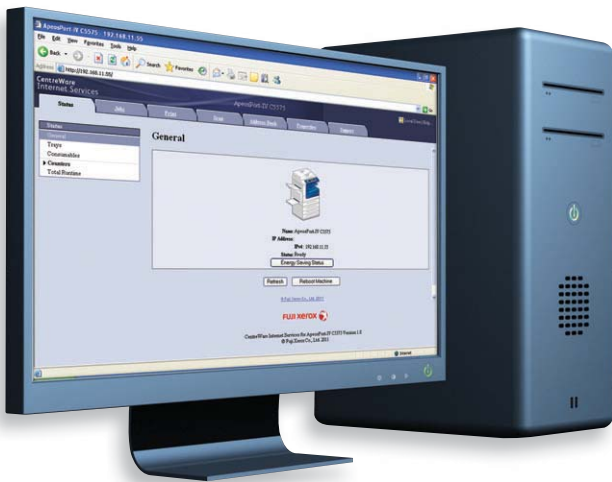
Faxes can be sent directly from PCs. This reduces the volume of paper required in an office and eliminates the need for unnecessarily printing faxes.

Eliminating spam faxes. If you do not want to receive faxes from specific or unlisted numbers they can be rejected. This handy function lets you eliminate indiscriminate direct mailing and wasteful printing of unwanted faxes.

IP Fax or FoIP offers a more cost efficient way of doing business. Faxes are sent and received through an IP-based network such as the internet. Faxes can be routed directly to an email account to conserve energy and paper.

Reporting and management tools

CentreWare™ Internet Services software makes it easy for administrators to configure the device, upload address books, monitor usage and consumables remotely and establish auditing capabilities.



Manage colour printing to minimise costs. Control costs by nominating when colour can be used, and by whom. This ensures that colour is available to those individuals who truly leverage its power, such as sales teams and the marketing department.

Driverless printing for remote users with CentreWare Internet Services web utility. Any connected computer can immediately output PDF, TIFF, JPEG and Docuworks files from any network computer, without using a print driver at all.

Device Configuration Tool allows for simplified device configuration and administration, and lets you easily clone configurations to other similar devices on the network.

Security at every level

Secure print helps prevent unauthorised viewers from seeing documents by holding jobs in the print queue until the user is authenticated.

Image overwrite security feature clears or “overwrites” all traces of any document image data remaining on the hard drive after a print, copy, scan or fax job (when enabled).

Hard disk encryption helps ensure that unauthorised users can't access stored documents.

IPv6 support includes full enablement of the new IPsec standard.

Internal security provides an additional measure of security, providing IP filtering, domain filtering and port blocking.

Device authentication restricts access to copy, print, scan and fax features by validating user names and passwords before use. Audit Log capabilities let you know who sent what, and when.

Embedded authentication enhances security and increases convenience. The ApeosPort-IV C5575/C4475/C3375/C3373/C2275 includes an authentication function so that unauthorised users are restricted from using the device. Each user's history can be collected from the job history record. By adding an embedded card reader* to the device, users can employ swipe card authentication for extra security. Use of the device can be restricted to specified users and linked with specific functions to enhance security and improve convenience for authorised users.

*An external or internal type IC Card Reader is available.



Extending your capabilities with Apeos Solutions

The transfer of knowledge, data and communication of information is critical to the efficiency and productivity of business today. The office employee also demands true 'ease of use' to ensure this knowledge is distributed efficiently and securely within the business.

Apeos iiX (Apeos Integration based on XML and SOAP) is the platform delivering integrated office solutions and provides additional capability to enhance your Enterprise productivity, security, streamline processes and reduce costs. Capabilities include: Cost Recovery, Secure Device Authentication via Card ID, Document Security Solutions and much more.

Leveraging Fuji Xerox consultancy expertise for greater ROI. To maximise your ApeosPort investment, leverage on Fuji Xerox's comprehensive consultancy expertise to customise the web services available through the Web Browser on your ApeosPort.

Depending on the complexity of your environment and business needs, the Fuji Xerox Business Alliance and Consulting Services (BACS) group provides document consulting, system design, development and project management services to assist you with your integration or customisation requirements. Our customisation team can re-design your ApeosPort's web browser to display the same "look-and-feel" as your business application. Enjoy true customisation with the flexibility to add company logo, change colours and integrate unique workflows.



Effectively manage printing costs in your office. By seamlessly integrating with Fuji Xerox multifunction devices (MFD's), **ApeosWare Management Suite** allows you to track, analyse and allocate costs of printouts sent to a networked printer, copier or MFD.

Select	Job Name	Date/Time Desc	Page	Qty
<input type="checkbox"/>	from FujiXerox01.xdw	09/11/30 17:16	1	1
<input type="checkbox"/>	from FujiXerox02.xdw	09/11/30 17:16	1	1
<input type="checkbox"/>	Mail1.xdw	09/11/30 17:16	1	1
<input type="checkbox"/>	from FujiXerox03.xdw	09/11/30 17:17	1	1
<input type="checkbox"/>	Mail2.xdw	09/11/30 17:17	1	1
<input type="checkbox"/>	from FujiXerox04.xdw	09/11/30 17:17	1	1
<input type="checkbox"/>	Mail3.xdw	09/11/30 17:17	1	1
<input type="checkbox"/>	from FujiXerox05.xdw	09/11/30 17:17	1	1

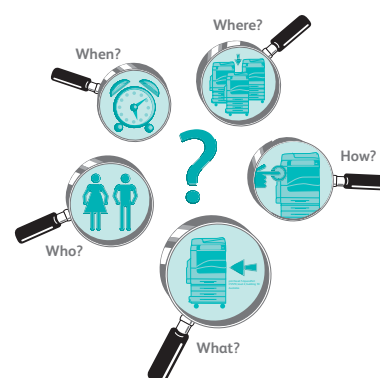
The **Print On Demand** with Secure Document release increases mobility and productivity by allowing your staff to output documents at any networked printer within your office. It enables a secure access by entering a user ID or swiping a card before getting their documents. This means that users can avoid being on guard while waiting for their printouts - letting them make better use of their billable time.

An extensive reporting capability enables traceability of costs within workgroups. It also provides information on which devices are heavily used and breaks down often so you can make informed decisions on deploying your office equipment.

Document security is priority.

Fuji Xerox introduces a solution that empowers you with top security for all your electronic and paper documents. The new ApeosWare Image Log Service Document Security Solution lets you monitor and track any document once it is copied, printed, faxed or scanned.

All documents that are copied, printed, faxed or scanned, are automatically saved as images by ApeosPort. Next, these captured images are seamlessly transferred to a core server with "OCR" technology, and are indexed and stored according to their job information. Should a leak occur, you can trace and locate the disclosed documents as well as the source of the leak including who, where, when, which and how, by performing keywords or content searches of the stored images on the core server. Investigative work that was once tedious and time-consuming now becomes swift and effortless!



Specifications of ApeosPort-IV C5575 / C4475 / C3375 / C3373 / C2275 Series

Fax Function (Optional)	
Send Document Size	Max: A3, 11 x 17", Long document (Max. 600 mm)
Recording Paper Size	Max: A3, 11 x 17", Min: A5
Transmission Time	2 seconds and more but fewer than 3 seconds
Transmission Mode	ITU-T G3
Scanning Resolution	Standard: 8 x 3.85 lines/mm, 200 x 100 dpi Fine: 8 x 7.7 lines/mm, 200 x 200 dpi Super Fine (400 dpi): 400 x 400 dpi Super Fine (600 dpi): 600 x 600 dpi MH, MR, MMR, JBIG
Coding Method	G3:336/312/288/264/240/216/192/168/144/120/96/72/48/24kpbs
Applicable Lines	Telephone Subscriber Line PBX, PSTN, Max. 3 ports

Direct Fax Function (Optional)	
Document Size	A3, B4, A4
Scanning Resolution	Same as the fax function
Transmission Speed	Same as the fax function
Applicable Lines	Same as the Fax Function
Operating System ¹	Windows® 2000, Windows® XP, Windows Server® 2003, Windows Vista®, Windows Server® 2008, Windows® 7, Windows® XP Professional x64, Windows Server® 2003 x64, Windows Vista® x64, Windows Server® 2008 x64, Windows Server® 2008 R2, Windows® 7 x64, Mac OS X 10.5/10.6/10.7

¹Please refer to the Fuji Xerox website for the latest information of the compliant OS.

Internet Fax Function (Optional)	
Document Size	A3, B4, A4
Scanning Resolution	Same as the fax function
Output Format	Format: TIFF-FX, Compression Method: MH, MMR, JBIG
Profile	TIFF-S, TIFF-F, TIFF-J
Protocol	Outgoing Mail Server: SMTP, Incoming Mail Server: SMTP, POP3
Connectivity	Standard: Ethernet 100BASE-TX/10BASE-T Optional: Ethernet 1000BASE-T

IP Fax (SIP) Function (Optional)	
Document Size	Same as the fax function
Scanning Resolution	Same as the fax function
Protocol	SIP, JT-T.38
Coding Method	Same as the fax function
Connectivity	Standard: Ethernet 100BASE-TX/10BASE-T Optional: Ethernet 1000BASE-T

Duplex Automatic Document Feeder B1-C¹ (Standard)	
	AP-IV C3375 AP-IV C3373 AP-IV C2275
Type	Duplex Automatic Document Feeder
Original Paper Size	Max: A3, 11 x 17", Min: A5 ² 38 - 128 gsm (Duplex: 50 - 128 gsm)
Capacity ³	110 sheets
Feeding Speed (A4LEF)	BW: 35ppm, Color: 35ppm.
Dimensions / Weight	W 560 x D 498 x H 125 mm, 8 kg

¹Available on AP-IV C3375/C3373/C2275 models only.

²Non-standard paper size single-sided mode: 125 x 85mm.

³64 gsm paper.

Duplex Automatic Document Feeder B1-PC¹ (Standard)	
	AP-IV C5575 AP-IV C4475
Type	Duplex Automatic Document Feeder
Original Paper Size	Max: A3, 11 x 17", Min: A5 38 - 128 gsm (In Duplex: 50 - 128 gsm)
Capacity ²	130 sheets
Feeding Speed (A4LEF)	BW: 55 ppm BW: 45 ppm BW: 35 ppm BW: 35 ppm BW: 35 ppm Color: 50 ppm Color: 45 ppm Color: 35 ppm Color: 35 ppm Color: 35 ppm
Dimensions / Weight	W 560 x D 498 x H 140 mm, 11 kg

¹Standard for AP-IV C5575/C4475 models only,Optional for AP-IV C3375/C3373/C2275 models.

²80 gsm paper.

High Capacity Feeder (HCF B1) (Optional)	
Paper Size / Paper Weight	A4 LEF, 8.5 x 11" LEF, B5 LEF, 55 - 216 gsm
Capacity ¹	2,030 sheets
Dimensions / Weight	W 389 x D 610 x H 380 mm, 29 Kg
Space Requirement ²	W 1,064 x D 699 mm

¹80 gsm paper.

²Main Unit + Side Tray, Manual Feeding Tray is fully extended.

Finisher-A1 (Optional)¹	
Type	Sort (Offset available) / Stack (Offset available)
Paper Size / Paper Weight	Max: A3, 11 x 17", Min: Postcards (100 x 148 mm), 55 - 220 g/m ²
Stacker Capacity²	
Finisher Tray	[Without Stapling] A4: 500 Sheets, B4: 250 Sheets, A3 or larger: 200 Sheets, Mixed Size Stacking³: 250 Sheets, [With Stapling] 30 Sets
Staple	
Capacity	A4: 50 Sheets (90gsm or less), B4 or larger: 30 Sheets (90gsm or less)
Size	Max: A3, 11 x 17", Min: B5LEF
Position	Single stapling (Front/Angled)
Dimensions / Machine Weight	W 559 x D 448 x H 246 mm, 12 kg
Space Requirement	W 1,129 x D 699 mm

¹The Optional Finisher-A1 cannot be installed on ApeosPort-IV C5575/C4475.

²64gsm paper.

³When larger size sheets are stacked on top of smaller size sheets.

⁴Main Unit + Finisher A1, when Extension Tray is pulled out and Bypass Tray is fully extended.

Note: The Optional Finisher-A1 cannot be installed on ApeosPort-IV C5575/C4475,DocuCentre-IV C5575/C4475.

Duplex Output Unit	
Applicable Paper Size	Max: SRA3(320 x 450mm), 12 x 18"(304.8 x 457.2mm),A3, Min: A5
Paper Weight	60-220gsm

Finisher-B1 (Optional)	
Type	Sort (Offset available) / Stack (Offset available)
Paper Size / Output Paper Weight	Max: A3, 11 x 17", Min: B5, 55 - 220 gsm
Stacker Capacity²	[Without Stapling] A4: 2000 Sheets, B4: 1,000 Sheets, Mixed Size Stacking³: 300 Sheets [With Stapling] A4: 100 Sets or 1,000 Sheets, B4 or larger: 75 Sets or 750 Sheets Booklet / Fold⁴: 50 Sets or 600 Sheets, Fold⁴: 500 Sheets
Staple	
Capacity	50 Sheets (90gsm or less)
Paper Size	Max: A3, 11 x 17", Min: B5LEF
Position	Single stapling (Front/Angled, Rear/straight), Dual stapling(Parallel to the edge)
Punch⁵	
Paper Size	A3, 11 x 17", B4, A4, A4 LEF, Letter 8.5 x 11", Letter 8.5 x 11" LEF, B5 LEF
Number of Holes	2/4-hole punch, 2/3- hole punch (US Specifications)
Paper Weight	55 - 200 gsm
Booklet Finishing⁶	
Capacity	Saddle Staple: 15 sheets, Fold: 5 sheets
Paper Size	Max: A3, 11 x 17", Min: A4, Letter (8.5 x 11")
Paper Weight	Saddle Staple: 64 - 80 gsm, Fold: 64 - 105 gsm
Dimensions / Weight	W620 x D552 x H987mm ⁷ , 28kg, Booklet Finisher attached: W620 x D597 x H1,057mm ⁸ , 37kg
Space Requirement²	W1,666 x D699mm Booklet Finisher attached: W1,666 x D709mm

¹Paper in the sizes larger than A3, 11 x 17" or smaller than B5 are delivered to the Center Tray.

²64 gsm paper

³When larger size sheets are stacked on top of smaller size sheets

⁴The optional Finisher B1 Booklet unit is required for features of saddle stapling / bi-folding. If the output after saddle-stapling/bi-folding is not removed from the tray, the next job may not be output. The similar situation may happen to the smaller paper size as well.

⁵Optional 2/4 Hole Punch kit or optional Finisher B1 2/3 Hole Punch kit(US Specifications) is required.

⁶Inner connector within the body is excluded.

⁷Main Unit + Finisher B1, when Extension Tray is pulled out and Bypass Tray is fully extended.

Finisher-C1 (Optional)	
Type	Sort / Stack
Output Tray	Sort / Stack
Finisher Tray	Sort (Offset available) / Stack (Offset available)
Paper Size / Paper Weight¹	
Output Tray	Max: SRA3(320 x 450mm), Min: B5, 55 - 220 gsm
Finisher Tray	Max: SRA3(320 x 450mm), Min: B5, 55 - 220 gsm
Stacker Capacity²	
Output Tray	500 Sheets (A4)
Finisher Tray	[Without Stapling] A4: 3,000 Sheets, B4 or larger: 1,500 Sheets, Mixed Size Stacking³: 300 Sheets [With Stapling] A4: 200 Sets or 3,000 Sheets, B4 or larger: 100 Sets or 1,500 Sheets
Staple	
Capacity	50 Sheets (90gsm or less)
Paper Size	Max: A3, 11 x 17", Min: B5
Position	Single stapling(Front/Rear,Angled), Dual stapling(Parallel to the edge)
Punch	
Paper Size	A3, 11 x 17", B4, A4, A4 LEF, Letter (8.5 x 11"), Letter (8.5 x 11") LEF, B5LEF
Number of Holes	2- hole punch (Optional:US2/3Holes)
Paper Weight	55 - 200 gsm
Dimensions / Weight	W 817 x D 639 x H 1,058 mm ⁶ , 60 kg
Space Requirement²	W 1,863 x D 699 mm

¹Paper in the sizes smaller than B5 are delivered to the Center Tray.

²64gsm paper.

³When larger size sheets are stacked on top of smaller size sheets.

⁴Inner connector within the body is excluded.

⁵Main Unit + Finisher C1, when Extension Tray is pulled out and Bypass Tray is fully extended.

Booklet Finisher-C1 (Optional)	
Type	Sort / Stack
Output Tray	Sort (Offset available) / Stack (Offset available)
Finisher Tray	Sort / Stack
Booklet Tray	
Paper Size / Paper Weight¹	
Exit Tray	Max: SRA3 (320 x 450mm), 12 x 19" (304.8 x 482.6mm), Min: B5, 55 - 220 gsm
Finisher Tray	Max: SRA3 (320 x 450mm), 12 x 19" (304.8 x 482.6mm) Min: B5, 55 - 220 gsm
Booklet Tray	Max: SRA3 (320 x 450mm) , 12 x 18" (304.8 x 457.2 mm) Min: A4, Letter (8.5 x 11"), 64 - 90 gsm
Stacker Capacity²	
Output Tray	500 Sheets (A4)
Finisher Tray	[Without Stapling] A4: 1,500 Sheets, B4 or larger: 1,500 Sheets, Mixed Size Stacking³: 300 Sheets [With Stapling] A4: 200 Sets or 1,500 Sheets, B4 or larger: 100 Sets or 1,500 Sheets
Booklet Tray	20 Sets ⁴
Staple	
Capacity	50 Sheets (90gsm or less)
Paper Size	Max: A3, 11 x 17", Min: B5
Position	Single stapling(Front/Rear,Angled), Dual stapling(Parallel to the edge)
Punch	
Paper Size	A3, 11 x 17", B4, A4, A4 LEF, Letter (8.5 x 11"), Letter (8.5 x 11") LEF, B5LEF
Number of Holes	2- hole punch (Optional:US2/3Holes)
Paper Weight	55 - 200 gsm
Booklet Finishing	
Capacity	Saddle Staple: 15 Sheets ⁵ , Middle-Fold: 5 Sheets, Bi-Fold: 1 Sheet
Paper Size	Max: SRA3 (320 x 450 mm), 12 x 18" (304.8 x 457.2 mm), Min: A4, Letter (8.5 x 11")
Paper Weight	Saddle Staple: 64 - 90 gsm ⁶ , Middle-Fold: 64 - 105 gsm, Bi-Fold: 64 - 220gsm
Dimensions / Machine Weight	W 876 x D 639 x H 1,058 mm, 90 kg
Space Requirement²	W 1,922 x D 699 mm

¹Paper in the sizes smaller than B5 are delivered to the Center Tray.

²64gsm paper.

³When larger size sheets are stacked on top of smaller size sheets.

⁴They are all output in the same size.

⁵Up to 14 sheets with cover. The saddle stapling capacity can be reset by Customer Engineer.

⁶The basis weight of a cover sheet shall be equal to or less than 220gsm. If the cover sheet of the basis weight in the range of 91-220gsm is used,the basis weight available for the main body of the document shall be 64-80 gsm.

⁷Inner connector within the body is excluded.

⁸Main Unit + Finisher C1 with Booklet Maker, when Extension Tray is pulled out and Bypass Tray is fully extended.

Side Tray (Optional)	
Paper Size	Same as the Copy function
Capacity	100 Sheets
Dimensions / Weight	W 353 x D 469 x H 198 mm, 1 Kg
Space Requirement	W 1,064 x D 699 mm

Specifications of ApeosPort-IV C5575 / C4475 / C3375 / C3373 / C2275 Series

Copy Function

	AP-IV C5575	AP-IV C4475	AP-IV C3375	AP-IV C3373	AP-IV C2275
Type	Console Type				
Memory	2GB				
HDD ¹	160 GB (Usable Space: 128 GB)				
Colour Capability	Full Colour				
Scanning Resolution	600 x 600 dpi				
Printing Resolution	1,200 x 2,400 dpi (Multi-value-photo), 600 x 600 dpi (Text / Text-Photo / Photo / Map)				
Halftone/Printable Colors	256 levels per color (16.7 Million colors)				
Warm-up Time	28 sec. or less, or if the main power is ON, 24 sec. or less (Room temperature: 20°C)				
Original Paper Size	Max. 297 x 432 mm (A3, 11 x 17") for both sheet original and book original				
Output Paper Size	Max. SRA3 (320 x 450mm) 12.6 x 17.7" (320 x 449.6 mm), 12 x 18" (304.8 x 457.2 mm) [For Bypass Tray, 12 x 19" (304.8 x 482.6mm)] Min: A5 [For Bypass Tray, Postcard (100 x 148 mm), Envelope (120 x 235 mm)] Image loss: Lead Edge within 4mm, Trail Edge within 2mm, Right & Left Edges within 2mm				
Output Paper Weight ²	Tray: 60 ~ 256 gsm, Bypass Tray: 55 ~ 280 gsm				
First Copy Output Time	3.7 sec <BW> 5.2 sec <Colour>	4.4 sec <BW> 5.7 sec <Colour>	4.9 sec <BW> 6.4 sec <Colour>	4.9 sec <BW> 6.4 sec <Colour>	6.6 sec <BW> 8.7 sec <Colour>
Reduction/Enlargement	Size-to-Size: 1:1 ± 0.7 % Presets: 1: 0.500, 1: 0.707, 1: 0.816, 1: 0.866, 1: 1.154, 1: 1.225, 1: 1.414, 1: 2.000 Variable: 1: 0.25 ~ 1: 4.00 (in 1% increments)				
Continuous Copy Speed ³	A4/EF / B5/LEF: 55 ppm <BW> 50 ppm <Colour> A4 / B5: 39 ppm <BW> 36 ppm <Colour> B4: 32 ppm <BW> 29 ppm <Colour> A3: 27 ppm <BW> 25 ppm <Colour>				
Paper Tray Capacity ⁴	Standard: 4 Tray Model: 500sheets x 4 Tray + Bypass Tray 90sheets Optional: High Capacity Feeder B1 (A4 1 Tray): 2,030sheets Max: 4,120sheets (500sheets x 4Tray + High Capacity Feeder B1+Bypass Tray)				
Continuous Copy ⁵	999 sheets				
Output Tray Capacity ⁶	Upper Center Tray: 250 sheets (A4 LEF), Lower Center Tray: 250 sheets (A4 LEF)				
Power Supply ⁷	220-240V AC ±10 %, 10/15A, 50/60Hz ±3 %				
Power Consumption	2.2kW or less(AC220V±10 %), 2.4kW or less(AC240V±10 %) Sleep Mode: 2.2W or less(AC220V) Sleep Mode: 2.2W or less(AC220V) Low Power Mode: 60W or less Low Power Mode: 42W or less Ready mode: 120W or less Ready mode: 60W or less				
Dimensions	W 640 x D 699 x H 1,128 mm (With DADF B1-P) W 640 x D 699 x H 1,143 mm (With DADF B1-PC)				
Machine weight ⁸	C3375/C3373/C2275: 129kg (With DADF B1-P) C 5575/C4475: 133kg (With DADF B1-PC)				
Space Requirement	DADF B1-C: W1,064 x D699mm ⁹ DADF B1-PC: W1,108 x D699mm ⁹				

¹ The hard disk capacity is not totally available for customers.
² Documents may not be printed correctly depending on usage conditions.
³ The speeds may slow down due to image quality adjustment.
⁴ 80gsm paper.
⁵ Copy process may stop temporarily for stabilization of image quality.
⁶ OCT function is off.
⁷ Excluding Toner.
⁸ When the Bypass Tray is fully extended.
⁹ When the Bypass tray is fully extended, When stopper of DADF is turned on.

Print Function

Type	Build-in Type
Continuous Print Speed ¹	Same as the Fundamental Function / Copy Function
Print Resolution	Output Resolution: 1,200 x 2,400 dpi, 1,200 x 1,200 dpi Data Process Resolution: Standard: 600 x 600 dpi, High Resolution: 600 x 600 dpi, High Fine: 1,200 x 1,200 dpi Standard: PCL6, PCL5, Optional: Adobe® PostScript® 3™
PDL	Ethernet (Standard): TCP/IP (Ipd, IPP, Port9100, SMB, WSD, Novell® NetWare®, ThinPrint®), Novell® NetWare® (IPX/SPX), NetBEUI (SMB), EtherTalk ²
Protocol	Parallel (Optional): Compatible, Nibble, ECP

Notes
1) If a problem occurs with the recording medium (hard disk) in the device, received data, stored data, and data registered in the settings, etc. may be lost. Please note that Fuji Xerox will not be held responsible for any damages resulting due to lost data.
2) The minimum holding period for replacement precision parts is 7 years after production is ceased for the main unit of the device.

Descriptions in this material, product specifications and / or appearances are subject to change without prior notice due to improvements. Please note that the product colour appears differently from the actual colour as a result of properties of papers or printing ink. Windows and Windows NT are registered trademarks of Microsoft Corporation. NetWare is a registered trademark of Novell, Inc. in the United States. Macintosh, Mac OS and Ether Talk are trademarks of Apple Computer, Inc. PostScript is a registered trademark of Adobe Systems Incorporated in each country. HP-GL is a registered trademark of Hewlett-Packard Company. Other company names or product names are registered trademarks or trademarks of each company.

Print Function

Operating System ¹	Standard: Windows® 2000, Windows® XP, Windows Server® 2003, Windows Vista®, Windows Server® 2008, Windows® 7, Windows® XP x64, Windows Server® 2003 x64, Windows Vista® x64, Windows Server® 2008 x64, Windows Server® 2008 R2, Windows® 7 x64, Mac OS X 10.5-10.7 Adobe® PostScript® 3™: Windows® 2000, Windows® XP, Windows Server® 2003, Windows Vista®, Windows Server® 2008, Windows® 7, Windows® XP x64, Windows Server® 2003 x64, Windows Vista® x64, Windows Server® 2008 x64, Windows Server® 2008 R2, Windows® 7 x64, Mac OS X 9.2.2, Mac OS X 10.3.9 ~ 10.4.6/10.4.8 ~ 10.4.11/10.5-10.7
Fonts	PCL6/5: 82 European fonts, 35 Symbol set, Chinese Font(ShuSong), Korean Fonts (Myungjo, Gothic, Round Gothic, Graphic, Kungso, Saemul) Adobe® PostScript® 3™: 136 European fonts TC/SC Additional Font ROM Kit: 4 Chinese Fonts (ShuSong, KaiTi, HeiTi, FangSong)
Emulation	HP-GL(HP7586B), HP-GL2/RTL(HP Design Jet 750C Plus), PCL5/6(HP Color Laser Jet 5500), ESC/P-K(LQ1900K II), KSSM, KSS843, KSS895
Connectivity	Standard: Ethernet 100BASE-TX / 10BASE-T, USB2.0 ⁴ Optional: Ethernet 1000BASE-T

¹ The print speed may be lower according to the document type
² The Optional Adobe® PostScript® 3™ kit is required.
Mac OS 9.2.2, Mac OS X 10.3.9/10.4.0/10.4.1/10.4.2/10.4.3/10.4.4/10.4.5/ 10.4.6/10.4.8/10.4.9/10.4.10/10.4.11/10.5 are supported.
³ Please refer to the Fuji Xerox web site for the latest information of the compliant OS.
⁴ USB 2.0 is supported by Windows® 2000 English, Windows® XP English, Windows Server® 2003 English, Windows Server® 2008 English, Windows Vista, Mac OS 9.2.2, and Mac OS X 10.3.9/10.4.0/10.4.1/10.4.2/10.4.3/10.4.4/10.4.5/10.4.6/10.4.8/10.4.9/10.4.10/10.4.11/10.5/10.6/10.7.

Note: WSD stands for Web Services on Devices.

Scan Function

Type	Colour Scanner
Original Paper Size	Same as the Fundamental Function / Copy Function
Scanning Resolution	600 x 600 dpi, 400 x 400 dpi, 300 x 300 dpi, 200 x 200 dpi
Scanning Halftone	Color: 10 bit input , 8 bit output for each for RGB color
Scanning Speed ¹	BW: 70 ipm, Color: 70 ipm (With DADF B1 - C) BW: 80 ipm, Color: 80 ipm (With DADF B1 - PC, Simplex) BW: 140 ipm, Color: 140 ipm (With DADF B1 - PC, Duplex) [Fuji Xerox Standard Document (A4 LEF), 200 dpi, Store to Folder.]
Connectivity	Standard: Ethernet 100BASE-TX / 10BASE-T Optional: Ethernet 1000 BASE-T
Store to Folder	Protocol: TCP/IP (WebDAV, HTTP) File Format: Monochrome binary: TIFF, DocuWorks®, PDF ² , XPS ² , Grayscale: TIFF, JPEG ³ , DocuWorks®, PDF ² , XPS ² , Full Color: TIFF, JPEG ³ , DocuWorks®, PDF ² , XPS ² , High Compression DocuWorks ² , High Compression PDF ² , High Compression XPS ² Driver: The TWAIN interface is supported. Operating System: Windows® 2000, Windows® XP, Windows Server® 2003, Windows Vista®, Windows Server® 2008, Windows® 7, Windows® XP Professional x64, Windows Server® 2003 x64, Windows Vista® x64, Windows Server® 2008 x64, Windows Server® 2008 R2, Windows® 7 x64
Scan to PC	Protocol: TCP / IP(SMB, FTP) Operating System: Windows® 2000, Windows® XP, Windows Server® 2003, Windows Vista®, Windows Server® 2008, Windows® 7, Windows® XP Professional x64, Windows Server® 2003 x64, Windows Vista® x64, Windows Server® 2008 R2, Windows® 7 x64, Mac OS X 10.2.x/ 10.3.8/ 10.3.9/ 10.4.2/ 10.4.4/ 10.4.8/ 10.4.9/ 10.4.10/ 10.5/ 10.6, Novell® NetWare® 5.11/ 5.12 ² File Format: Monochrome binary: TIFF (Compression method: MH, MMR), DocuWorks, PDF, XPS, Grayscale/Full Color: TIFF (Compression method: JPEG), JPEG, DocuWorks, PDF, XPS, High Compression DocuWorks ² , High Compression PDF ² , High Compression XPS ² , Microsoft® Word documents ⁴ , Microsoft® Excel documents ⁴
Scan to e-mail	Protocol: TCP/IP (SMTP) File Format: Monochrome binary: TIFF (Compression method: MH, MMR), DocuWorks, PDF, XPS, Grayscale/Full Color: TIFF (Compression method: JPEG), JPEG, DocuWorks, PDF, XPS, High Compression DocuWorks ² , High Compression PDF ² , High Compression XPS ² , Microsoft® Word documents ⁴ , Microsoft® Excel documents ⁴

¹ The scanning speeds vary depending on the document type.
² When scanned image is retrieved using CentreWare Internet Services.
³ When scanned image is retrieved using Network Scanner Utilities 3.
⁴ Please refer to the Fuji Xerox website for the latest information of the compliant OS.
⁵ Only FTP is supported as protocol.
⁶ To use this feature, an optional Advanced Scan Kit is required. The feature is designed to edit / reuse the text/image of the scanned / saved document. This feature is not to guarantee high-quality output result of text, diagrams and pictures on scanned document.

Note: XPS stands for XML Paper Specification.



Reproduction Prohibitions Please note that reproduction of the following is prohibited by law:
Domestic and overseas bank notes and coins, government-issued securities, national bonds and local bond certificates. Unused postage stamps and post cards. Certificate stamps stipulated by law. The reproduction of works for copyright purposes (literary works, musical works, paintings, engravings, maps, cinematographic works, photographic works, etc.) is prohibited except when they are reproduced personally, at home or within limited range according to the above. This product is equipped with an anti-counterfeit feature. This feature is not intended to prevent illegal reproduction. Be extremely careful about the management of equipment used.

For Your Safe Use
Before using the product, read the Instruction Manual carefully for proper use.
Use the product with an appropriate adequate power source and voltage displayed. Be sure to establish a ground.
In the case of a failure or short circuit, an electric shock may result.

For more information or detailed product specifications, call or visit us at

FUJI XEROX ASIA PACIFIC PTE LTD Malaysia Operations (993478A)

HQ: 10, Jalan Bersatu 13/4, 46200 Petaling Jaya, Selangor. Tel: 03-7882 2888 Toll-Free: 1-300-88-5880
BRANCHES Penang: 19-G-2, B Tower, Bayan Point, Medan Kampung Relau, 11900 Pulau Pinang. Tel: 04-643 5000 Fax: 04-644 4677 **Johor Bahru:** No. 21 & 23, Jalan Setia Tropika 1/28, Taman Setia Tropika, 81200 Kempas, Johor Bahru. Tel: 07-238 7868 Fax: 07-238 2678 , 07-238 2178 **Melaka:** 43 & 45, Jalan Melaka Raya 13, Taman Melaka Raya, 75000 Melaka. Tel: 06-281 0466 Fax: 06-281 0408 **Kota Kinabalu:** Lot No. P1/G/42/Grd, 1st, 2nd, 3rd & 5th Floor, KK Time Square, 88100 Kota Kinabalu, Sabah. Tel: 088-486 888 Fax: 088-486 668 **Kuching:** 199A-201, Lot 3049 & 3050, Eastmoore Centre, 2 ½ Mile Jalan Rock, 93200 Kuching, Sarawak. Tel: 082-240 633, 082-254 633 Fax: 082-418 733

http://www.fujixerox.com.my

