

ApeosPort-IV
7080/6080



ApeosPort-IV 7080/6080

Digital Black and White Multifunction Device

Leading the Way to Maximum
Productivity and Efficiency



Setting the Highest Standard for Speed and Productivity



Standard
Base Unit with Four-tray Module

The **ApeosPort-IV 7080/6080** is our mono multifunction device for high-speed, high-volume and reliable document processing.

The ApeosPort-IV 7080/6080 has copy and print speed of 75/65 pages per minute (ppm), as it sets the highest standard for speed and productivity. Its use of Smart Energy Management Technology, which supplies energy only to the activated function, makes it an efficient and environmentally friendly choice.

Precision and speed in every page. No more time wasted in waiting for printouts and copies: ApeosPort-IV 7080/6080 has a print and copy speed of 75/65 pages per minute (ppm).

High resolution output – a genuine 1,200 dpi. The ApeosPort-IV 7080/6080 can produce high resolution output of 1,200 dpi. Users have the option to switch from Image mode to other settings such as Text mode, for faster copy output.

Configuration and Options



1 Finisher-C1
Base Unit with Four-tray Module
Stacker / Stapler / Hole Puncher



2 Finisher-C1 with Booklet Maker
Stacker / Stapler / Hole Puncher / Booklet Maker
High-Capacity Feeder (1 tray)

At A Glance

Productivity

- Copy and Print speed of 75/65 pages per minute.
- Colour and mono scanning speed at 200ipm for 2-sided document.
- Advanced finishers feature stapling, hole punching, booklet finishing, and many other finishing tasks.
- High-Capacity trays of up to 6,450 sheets give longer print run and reduce user intervention.
- Print Utility allows users to print web pages and photos from iOS/Android devices



Cost Efficiency

- Combination of Multiple-Up feature and booklet creation lowers printing costs and number of pages printed without losing content.
- Private Charge Print reduces unnecessary print jobs by storing output document temporarily on the machine before actual printing.
- Reporting capability enables the tracking of print usages.

Innovation

- User Interface features simple graphics and large buttons for improved visibility and response speed.
- Document Conversion to Microsoft Word / Excel formats for easy editing.
- Google Cloud Print enables printing of documents from various mobile devices.
- Apeos Solutions provides integrated office solutions, such as cost recovery, secure device authentication, and document security.



Sustainability

- Fuji Xerox's Smart Energy Management Technology enables the device to activate only the modules required by the user.
- Document Monitor and Eco Copy allow users to analyse the environmental impact of their operations through the ecological rating display or amount of paper saved.
- Power LED scanner consumes less energy and gives ultra-quiet operation.

High-speed scanning delivers maximum productivity.

The ApeosPort-IV 7080/6080 is capable of scanning both sides of a document in a single pass, at a maximum rate of 200 images per minute for both colour and black-and-white documents. The duplex automatic document feeder can also hold a maximum of 250 sheets.

Professional finishing options.

Create professional presentations and attractive manuals or proposals. This range of optional finishers gives you efficient, finish-on-demand versatility. These advanced finishers feature stapling, hole punching, booklet finishing, and many other finishing tasks.

High-capacity paper trays. Up to 6,450 sheets means fewer trips to load paper, especially during long print jobs. The ApeosPort-IV 7080/6080 can be configured with the following tray options:

- Standard 4,450 sheets (including Tray 5-Bypass of 100 sheets)
- An optional 2,000 sheet High-Capacity Feeder (1 Tray) can also be added to enable longer uninterrupted job runs



3 Finisher-D2
Stacker / Stapler / Hole Puncher / Paper Fold



4 Finisher-D2 with Booklet Maker
Stacker / Stapler / Hole Puncher
Booklet Maker / Paper Fold

Advanced Functions for Demanding Jobs

The **ApeosPort-IV 7080/6080** does a superb job of answering your business needs and exceeding expectations. Innovative multifunction capabilities let you save energy, print from mobile devices and streamline workflow processes for high-quality performance.

Smart Energy Management Technology.

Our innovative Smart Energy Management Technology better manages energy usage by only using what is necessary, when it's necessary. This enables the device to activate only the modules required by the user, saving energy and reducing CO2 emissions. What's more, offices will enjoy a much quieter environment.

Document Conversion to Word/Excel® formats for easy editing.

The ApeosPort-IV 7080/6080 can detect text, tables and pictures in scanned images and convert them into Microsoft Word and Excel documents so you can edit them easily. Paper documents and original data that have been lost can be regained and easily used, saving time and hassle for users by eliminating rekeying chores.

The optional Advanced Scan Kit is required.

IP fax or FoIP

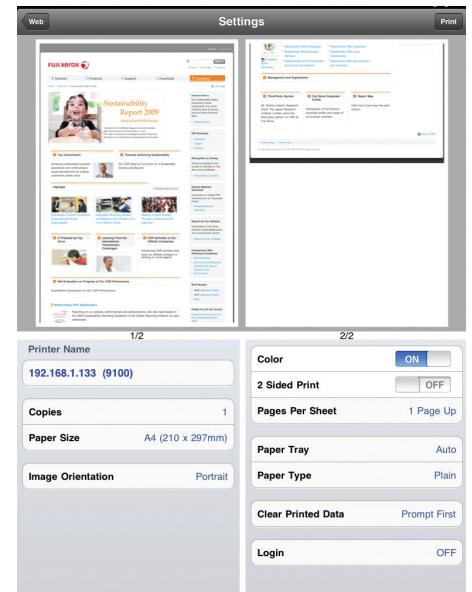
offers a more cost-efficient way of doing business. Faxes are sent and received through an IP-based network such as the internet. Faxes can be routed directly to an email account to conserve energy and paper.

Mobile/Cloud Printing.

Print Utility allows users to print web pages and photos from iOS/Android devices. Print Utility for iOS also allows you to print DocuWorks and PDF documents from a document viewer application such as DocuWorks Viewer Light for iPhone/iPad. The ApeosPort-IV 7080/6080 supports AirPrint* printing. Google Cloud Print, a cloud printing service provided by Google, can also be registered to enable printing of documents from various mobile devices.

** The optional Printer Kit is required.*

** Available after March 2012.*



Print Utility for iOS or DocuWorks Viewer Light for iPhone/iPad can be downloaded from Apple App Store at no cost. Any fees incurred when communicating with Apple App Store are the responsibility of the customer.

Document Security at Every Step

Embedded authentication enhances security and increases convenience.

The ApeosPort-IV 7080/6080 includes an authentication function so that unauthorised users are restricted from using the device. Each user's history can also be collected from the job history record. By adding an embedded card reader to the device, users can employ swipe card authentication for extra security. Use of the device can be restricted to specified users and linked with specific functions to enhance security and improve convenience for authorised users.

An external type IC Card Reader is available.

- **Secure print** helps prevent unauthorised viewers from seeing documents by holding jobs in the print queue until the user is authenticated.
- **Image overwrite** security feature clears or "overwrites" all traces of any document image data remaining on the hard drive after a print, copy, scan or fax job (when enabled).
- **Hard disk encryption** helps ensure that unauthorised users can't access stored documents.
- **IPv6 support** includes full enabling of the new IPSec standard.
- **Internal Security** provides an additional measure of security, providing IP filtering, domain filtering and port blocking.
- **Device authentication** restricts access to copy, print, scan, and fax features by validating user names and passwords before use. Audit Log capabilities let you know who sent what, and when.

A Model for Efficiency, Sustainability, and Flexibility

Walk-up simplicity. Print from and scan to any USB memory device for faster document delivery when you're not at your computer.

To speed up copying and faxing an express (simple) copy and fax feature is available that displays only the basic settings. This is provided in addition to the normal features.

Dramatically increase your workflow efficiency. Cutting edge scanning functionality opens the door to better ways of getting work done. Scan to Email quickly distributes documents to multiple email addresses. Store files on the device, or in a personal directory. You can also scan documents to network folders, FTP sites and fax servers right from the device.

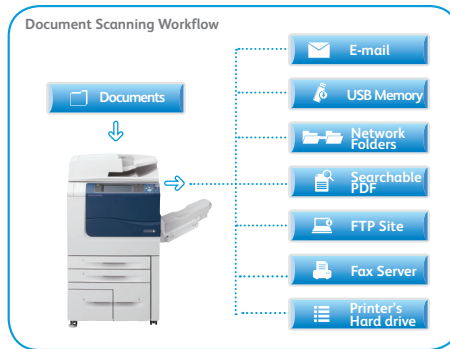
Easy archiving, organising and searching. With scan to searchable PDF, you can create a fully text-searchable file and integrate it into your workflow process in one easy step.

The optional Advanced Scan Kit is required.

Significantly smaller scan files. The latest scan-export compression technologies reduce traffic on the network and accelerate document delivery.

The optional Advanced Scan Kit is required.

Store to Folder feature allows you to scan to a folder on the printer's hard drive to reprint on demand or retrieve via a web



browser. Documents stored on the hard drive are displayed as thumbnails and up-close previews on the device touchscreen.

Forwarding received fax documents. When faxes are received they can be stored in the device folders, and any required documents can be printed after checking thumbnail previews. This cuts waste and reduces paper use. Documents received in a folder can also be forwarded by fax, printed, and sent via e-mail, FTP, or SMB.

Faxes can be sent directly from PCs. This reduces the volume of paper required in an office and eliminates unnecessary printing of fax documents.

Eliminating spam faxes. If you do not want to receive faxes from specific or unlisted numbers they can be rejected. This handy function lets you eliminate indiscriminate direct mailing and wasteful printing of unwanted faxes.



Eco Copy. The Eco Copy application makes it easy to be environmentally friendly. The notification screen shows the amount of paper you save by choosing the Multiple-Up copy function.

Users can analyse the environmental impact of their print operations by checking the ecological rating display on the Document Monitor*. This function displays up to five leaves to indicate how environmentally friendly the print settings are.

** The Document Monitor is software that is installed on the computer. It can be downloaded from the Fuji Xerox website.*

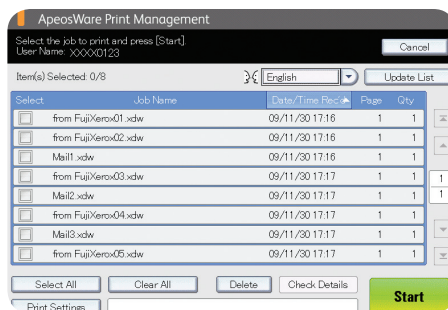
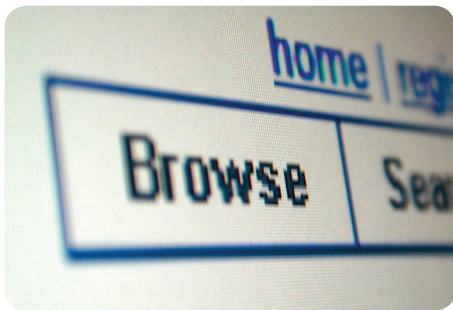
Cut down on paper usage. The Multiple-Up function enables you to print multiple pages on a single piece of paper. Combine this function with two-sided printing and dramatically reduce paper usage by printing or copying up to eight pages on one piece of paper.

An 8.5-inch, colour touch screen provides the comfortable look and feel Fuji Xerox is known for. It also features bright, intuitive icons and easy access to all major functions directly from the home screen.



Extending Your Capabilities with Apeos Solutions

Apeos iiX (Apeos Internet Integration based on XML and SOAP) is the platform delivering integrated office solutions. It provides additional capabilities to enhance your enterprise productivity, ensure security, streamline processes, and reduce cost. Capabilities include: Cost Recovery, Secure Device Authentication via Card ID, Document Security Solutions and much more.



Leverage Fuji Xerox consultancy expertise for greater ROI.

To maximise your ApeosPort investment, leverage Fuji Xerox's comprehensive consultancy expertise to customise the web services available through the web browser on your ApeosPort.

Depending on the complexity of your environment and business needs, the Fuji Xerox Business Alliance and Consulting Services (BACS) group provides document consulting, system design, development and project management services to assist you with your integration or customisation requirements. Our customisation team can re-design your ApeosPort's web browser to display the same look and feel as your business application. Enjoy true customisation with the flexibility to add your company logo, change colours and integrate unique workflows.

Effectively manage printing costs in your office.

By seamlessly integrating with Fuji Xerox multifunction devices (MFD), ApeosWare Management Suite allows you to track, analyse and allocate costs of printouts sent to a networked printer, copier or MFD.

The Print On Demand with Secure Document release increases mobility and productivity by allowing your staff to output documents at any networked printer within your office. It enables a secure access by entering a user ID or swiping a card before getting their documents. This means that users can avoid being on guard while waiting for their printouts – letting them make better use of their billable time.

An extensive reporting capability enables traceability of costs within workgroups. It also provides information on which devices are heavily used and breaks down often so you can make informed decisions on deploying your office equipment.

Document security is priority.

Fuji Xerox introduces a solution that empowers you with top security for all your electronic and paper documents. The new ApeosWare Image Log Service Document Security Solution lets you monitor and track any document once it is copied, printed, faxed or scanned.

All documents that are copied, printed, faxed or scanned, are automatically saved as images by ApeosPort. Next, these captured images are seamlessly transferred to a core server with "OCR" technology, and are indexed and stored according to their job information. Should a leak occur, you can trace and locate the disclosed documents as well as the source of the leak including who, where, when, which and how, by performing keywords or content searches of the stored images on the core server. Investigative work that was once tedious and time-consuming now becomes swift and effortless!

Specifications

Copy Function

Item	ApeosPort-IV 7080		ApeosPort-IV 6080	
Type	Console Type			
Memory	2GB			
HDD ¹	160GB (Applicable area 128GB)			
Scanning Resolution	600 x 600dpi			
Printing Resolution	2400 dpi equivalent x 1200 dpi			
Halftone	256 levels			
Warm-up time	30 sec. or less (Room temperature: 20°C)			
Original Paper Size	Sheets/Books: Max. 297 x 432mm (A3, 11 x 17")			
Output Paper Size	Maximum	A3,11 x 17"; Bypass Tray: 12X18"(304.8X457.2mm)		
	Minimum	A5; Bypass Tray: Postcard (100 x 148mm)		
	Image Loss	Lead Edge within 4mm , Trail Edge within 4mm , Right & Left Edges within 4mm		
Output Paper Weight ²	Tray	52-200gsm		
	Bypass Tray	52-250gsm		
First Copy Output Time (A4 LEF)	3.0sec			
Reduction/Enlargement	Size-to-Size	1:1±0.7%		
	Preset	1:0.500, 1:0.707, 1:0.816, 1:0.866, 1:1.154, 1:1.225, 1:1.414, 1:2.000		
	Variable	1:0.25 - 1:4.00 (in 1% increments)		
Continuous Copy Speed ³	B5 LEF	79 ppm	68 ppm	
	A4/LEF	75 ppm	65 ppm	
	A4/B5	55 ppm	47 ppm	
	B4	44 ppm	39 ppm	
	A3	37 ppm	33 ppm	
	Paper Tray Capacity ⁴	Standard	4,450 sheets (500 X 2 Trays + 1,490 + 1,860 + Bypass 100 sheets)	
	Optional	High Capacity Feeder (A4, 1 Tray): 2,000 sheets		
	Max Paper Tray Capacity	6,450 sheets: Standard + High Capacity Feeder (A4, 1 Tray)		
Continuous Copy ⁵	9,999 copies			
Output Tray Capacity ⁴	500 sheets (A4/Letter) (Simple Catch Tray)			
Power Supply	AC220-240 V±10% / 110V±10% , 10/15A for both 50/60Hz±3% 110V±10% , 10/15A 50/60Hz±3%			
Power Consumption	2.2kW or less (AC220V±10%) , 2.4kW or less (AC240V±10%) , 1.65 kW or less (AC110V±10%)			
	Sleep Mode: 2.0W or less (AC220V)			
	Low Power Mode: 162W or less ⁶			
	Ready mode: 226W or less			
Dimensions	W 620 X D 804 X H 1,154 mm			
Machine Weight ⁷	195kg			
Space Requirement ⁸	W1,491X D804 mm			

¹ The hard disk capacity is not totally available for customers.

² Documents may not be printed correctly depending on usage conditions.

³ The speeds may slow down due to image quality adjustment.

⁴ 80gsm paper.

⁵ Copy process may stop temporarily for stabilization of image quality.

⁶ Sleep mode is not set at the time of shipment from the factory.

⁷ Excluding Toner.

⁸ When the Bypass Tray is fully extended.

Print Function

Type	Built-in Type	
Continuous Print Speed ¹	Same as the Fundamental Function / Copy Function	
Print Resolution	Output Resolution	1,200 X 1,200dpi
	Data Process Resolution	Standard: 600 x 600dpi, High Definition: 1200 x 1200dpi
PDL	Standard	PCL6, PCL5
	Optional	Adobe® PostScript® 3 TM
Protocol	Ethernet (Standard)	TCP/IP (Ipd, IPP, Port9100, SMB, WSD, Novell® NetWare® (IPX/SPX), NetBEUI (SMB), EtherTalk ³
	Operating System ³	PCL6 Driver (Standard) Windows® 2000, Windows® XP, Windows Server® 2003, Windows Vista®, Windows Server® 2008 (x86), Windows® 7, Windows® XP Professional x64 Edition, Windows Server® 2003 x64 Editions, Windows Vista® (x64), Windows Server® 2008 (x64), Windows Server® 2008 R2 (x64), Windows® 7 (x64) Mac OS X-Driver (Standard) Mac OS X 10.5/10.6/10.7 Adobe® PostScript® 3TM (Option) Windows® 2000, Windows® XP, Windows Server® 2003, Windows Vista®, Windows Server® 2008 (x86), Windows® 7, Windows® XP Professional x64 Edition, Windows Server® 2003 x64 Editions, Windows Vista® (x64), Windows Server® 2008 (x64), Windows Server® 2008 R2 (x64), Windows® 7 (x64) Mac OS 9.2.2, Mac OS X 10.3.9/10.4.0/10.4.1/10.4.2/10.4.3/10.4.4/10.4.5/10.4.6/10.4.8/10.4.9/10.4.10/10.4.11/10.5/10.6/10.7
Fonts	Standard	PCL6/5: 82 European fonts, 37 Symbol set, Chinese Font (ShuSong), Korean Fonts (Myungjo, Gothic, Round Gothic, Graphic, Kungso, Saemul)
	Adobe® PostScript® 3TM (Option)	136 European fonts TC/SC Additional Font ROM Kit: 4 Chinese Fonts (ShuSong, KaiTi, HeiTi, FangSong)
Emulation	Standard	HP-GL(HP7586B), HP-GL2/RTL(HP Design Jet 750C Plus), PCL5/6(HP Color Laser Jet 5500), ESC/P-K(LQ1900K II), KSSM, KS5843, KS5895
Connectivity	Standard	Ethernet 100BASE-TX/10BASE-T, USB2.0 ⁴
	Optional	Ethernet 1000BASE-T ⁵

¹ The speed may slow down due to image quality adjustment.

² The Optional Adobe® PostScript® 3TM kit is required.

Mac OS 9.2.2, Mac OS X 10.3.9/10.4.0/10.4.1/10.4.2/10.4.3/10.4.4/10.4.5/ 10.4.6/10.4.8/10.4.9/10.4.10/10.4.11/10.5 are supported.

³ Please refer to the Fuji Xerox website for the latest supported operating systems

Windows® 2000, Windows® XP, Windows Server® 2003, Windows Vista®, Windows Server® 2008 (x86), Windows® 7, Windows® XP Professional x64 Edition, Windows Server® 2003 x64 Editions, Windows Vista® (x64), Windows Server® 2008 (x64), Windows Server® 2008 R2 (x64), Windows® 7 (x64).

Mac OS 9.2.2, Mac OS X 10.3.9/10.4.0/10.4.1/10.4.2/10.4.3/10.4.4/10.4.5/10.4.6/10.4.8/10.4.9/10.4.10/10.4.11/10.5/10.6/10.7.

⁵ When this option is equipped, Ethernet 100BASE-TX/10BASE-T will not be available.

Notes : WSD stands for Web Services on Devices.

Duplex Automatic Document Feeder

Item	ApeosPort-IV 7080		ApeosPort-IV 6080	
Type	Duplex Automatic Document Feeder			
Original Paper Size/ Output Paper Weight	Max: A3, 11X17"		Min: A5	
Capacity	38-200gsm (Duplex: 50 - 200gsm)			
Feeding Speed (A4 LEF Simplex)	75 ppm		65 ppm	

Scan Function (Optional)

Item	Description	
Type	Colour Scanner	
Original Paper Size	Same as the Fundamental Function / Copy Function	
Scanning Resolution	600X600dpi, 400X400dpi, 300X300dpi, 200X200dpi	
Scanning Halftone	Color:10 bit input, 8 bit output for each for RGB color	
Scanning Speed ¹	<BW (Simplex)> 100 ipm <Color (Simplex)> 100ipm <BW (Duplex)> 200ipm <Color (Duplex)> 200ipm (Fuji Xerox Standard Document (A4 LEF), 200dpi, Store to Folder.)	
Connectivity	Standard	Ethernet 100BASE-TX/10BASE-T
	Optional	Ethernet 1000BASE-T
Store to Folder	Protocol	TCP/IP (WebDAV, HTTP)
	File Format	Monochrome binary: TIFF, DocuWorks ² , PDF ² , XPS ² Grayscale: TIFF, JPEG ³ , DocuWorks ² , PDF ² , XPS ² Full Colour: TIFF, JPEG, DocuWorks ² , PDF ² , XPS ² , high compressed DocuWorks ² , high compressed PDF ² , high compressed XPS ²
DRIVER	The TWAIN interface is supported.	
Operating System ⁴	Windows® 2000, Windows® XP, Windows Server® 2003, Windows Vista®, Windows Server® 2008 (x86), Windows® XP Professional x64 Edition, Windows Server® 2003 x64 Editions, Windows Vista® (x64), Windows Server® 2008 (x64), Windows Server® 2008 R2 (x64), Windows® 7 (x64)	
Scan to PC	Protocol	TCP/IP (SMB, FTP)
	Operating System ⁴	Windows® 2000, Windows® XP, Windows Server® 2003, Windows Vista®, Windows Server® 2008 (x86), Windows® 7, Windows® XP Professional x64 Edition, Windows Server® 2003 x64 Editions, Windows Vista® (x64), Windows Server® 2008 (x64), Windows Server® 2008 R2 (x64), Windows® 7 (x64) Mac OS X 10.2.x/10.3.8/10.3.9/10.4.2/10.4.4/10.4.8/10.4.9/10.4.10/10.4.11/10.5.0/10.5.1/10.5.2/10.5.3/10.5.4/10.6 Novell® NetWare® 5.11/5.12 ⁵
File Format	Monochrome binary:	TIFF, DocuWorks, PDF, XPS
	Grayscale/Full Colour:	TIFF, JPEG, DocuWorks, PDF, XPS, high compressed DocuWorks, high compressed PDF, high compressed XPS, Microsoft® Word documents ⁶ , Microsoft® Excel® documents ⁶
Scan to e-mail	Protocol	TCP/IP (SMTP)
	File Format	Monochrome binary: TIFF, DocuWorks, PDF, XPS Grayscale/Full Colour: TIFF, JPEG, DocuWorks, PDF, XPS, high compressed DocuWorks, high compressed PDF, high compressed XPS, Microsoft® Word documents ⁶ , Microsoft® Excel® documents ⁶

¹ The scanning speeds vary depending on the document type.

² When scanned images are downloaded through CentreWare Internet Services.

³ When Network Scanner Utility 3 is used.

⁴ Please refer to the Fuji Xerox website for the latest supported operating systems.

⁵ Only FTP is supported as protocol.

⁶ To use this feature, an optional Advanced Scan Kit is required. The feature is designed to edit / reuse the text/image of the scanned / saved document. This feature is not to guarantee high-quality output result of text, diagrams and pictures on scanned document.

Note : XPS stands for XML Paper Specification.

Fax Function (Optional)

Item	Description	
Send Document Size	Max: A3, 11X17", Long document acceptable (Max. length: 600mm)	
Recording Paper Size	Max: A3, 11X17"	Min: A5
Transmission Time ¹	2 seconds and more but fewer than 3 seconds ¹	
Transmission Mode	ITU-T G3	
Scanning Resolution	Standard	8 x 3.85lines/mm, 200 x 100dpi
	Fine	8 x 7.7lines/mm, 200 x 200dpi
	Super Fine (400dpi)	16 x 15.4lines/mm, 400 x 400dpi
	Super Fine (600dpi)	600 x 600dpi
Coding Method	MH, MR, MMR, JBIG	
Transmission Speed	G3: 33.6/31.2/28.8/26.4/24.0/21.6/19.2/16.8/14.4/12.0/9.6/7.2/4.8/2.4kbps	
Applicable Lines	Telephone subscriber line, PBX, PSTN, Max. 3 ports ² (G3-3ports)	

¹ When A4 size document with approximately 700 characters is transmitted in standard image-quality (8x3.85 lines/mm) and in high-speed mode (28.8kbps or faster, JBIG). Only indicates the time for transmitting the image information and does not include the communication control time. The total communication time will vary depending on the contents of the document, the type of machine receiving the fax, and line condition.

² Maximum of 3 lines at the same time. "Port" means the number of connectable channels.

Item	Description	
Document Size	A3, B4, A4	
Transmission Time	Same as the fax function	
Transmission Speed	Same as the fax function	
Applicable Line	Same as the fax function	
Operating System ¹	PCL6 Driver (Standard)	Windows® 2000, Windows® XP, Windows Server® 2003, Windows Vista®, Windows Server® 2008 (x86), Windows® 7, Windows® XP Professional x64 Edition, Windows Server® 2003 x64 Editions, Windows Vista® (x64), Windows Server® 2008 (x64), Windows Server® 2008 R2 (x64), Windows® 7 (x64)
	Mac OS X-Driver (Standard)	Mac OS X 10.5/10.6/10.7

¹ Please refer to the Fuji Xerox web site for the latest supported operating systems.

Internet Fax Function (Optional)

Item	Description	
Document Size	A3, B4, A4	
Scanning Resolution	Same as the fax function	
Output Format	Format: TIFF-FX, Compression Method: MH, MMR, JBIG	
Profile	TIFF-S, TIFF-F, TIFF-J	
Protocol	Outgoing Mail Server: SMTP Incoming Mail Server: SMTP, POP3	
Connectivity	Standard	Ethernet 100BASE-TX/10BASE-T
	Optional	Ethernet 1000BASE-T

IP Fax (SIP) Function (Optional)

Item	Description	
Document Size	Same as the fax function	
Scanning Resolution	Same as the fax function	
Protocol	SIP, -JT-T:38	
Coding Method	Same as the fax function	
Connectivity	Standard	Ethernet 100BASE-TX/10BASE-T
	Optional	Ethernet 1000BASE-T

Specifications (continued)

Finisher-C1 (Optional)

Item	Description
Tray	Output Tray Sort / Stack
Finishing Tray	Sort (Offset available) / Stack (Offset available)
Paper Size/ Paper Weight	Output Tray Max: 12X18" (304.8X457.2mm) Min: Postcard (100 x 148mm); 52-250gsm
	Finishing Tray Max: 12X18" (304.8X457.2mm) Min: B5 52-200gsm
Stacker Capacity ¹	Output Tray 500 sheets (A4)
	Finishing Tray Without Stapling: A4: 3,000sheets, B4 or larger: 1,500sheets, Mixed Size Stacking ² : 300sheets With Stapling: A4: 200sets (3,000sheets), B4 or larger: 100sets (1,500sheets)
Staple	Capacity 50 sheets (90gsm or less)
	Paper Size Max: A3, 11 x 17" Min: B5
	Position Single stapling (Front/Rear, Angled) Dual stapling (Parallel to the edge)
Punch	Number of Holes 2/4- hole punch (Optional: US2/3holes)
	Paper Size A3, 11 x 17", B4, A4, A4 LEF, Letter (8.5 x 11"), Letter LEF (8.5 x 11"), B5 LEF
	Paper Weight 52-200 gsm
Dimensions ³ /Weight	W788 X D644 X H1,058mm, 50kg
Space Requirement ⁴	W1,874 X D804mm

¹ 80 gsm paper or less

² When larger-size paper sheets are stacked on smaller-size paper.

³ Inner connector within the body is excluded.

⁴ Main Unit + Finisher C1, when Extension Tray is pulled out and Bypass Tray is fully extended.

Finisher-C1 with Booklet Maker (Optional)

Item	Description
Tray type	Output Tray Sort / Stack
Finishing Tray	Sort (Offset available) / Stack (Offset available)
Booklet Tray	Sort / Stack
Paper Size ¹ / Paper Weight	Finishing Tray Max: 12X18" (304.8X457.2mm), Min: Postcard (100 x 148mm) 52-250gsm
	Output Tray Max: 12X18" (304.8X457.2mm) Min: B5; 52-200gsm
	Booklet Tray Max: A3, 12 x 18" (304.8 x 457.2mm) Min: A4, Letter (8.5 x 11"); 60-105gsm
Stacker Capacity ¹	Output Tray 500sheets (A4)
	Finisher Tray Without Stapling: A4: 1,500sheets, B4 or larger: 1,500sheets, Mixed Size Stacking ² : 300sheets With Stapling: A4: 200sets (1,500sheets), B4 or larger: 100sets (1,500sheets)
	Booklet Tray 20 sets ³
Staple	Capacity 50 sheets (90gsm or less)
	Paper Size Max: A3, 11 x 17" Min: B5
	Position Single stapling (Front/Rear/Angled), Dual stapling (Parallel to the edge)
Punch	Number of Holes 2/4- hole punch (Optional: US2/3holes)
	Paper Size A3, 11 x 17", B4, A4, A4 LEF, Letter (8.5 x 11") Letter LEF (8.5 x 11"), B5 LEF
	Paper Weight 52 - 200gsm
Booklet Finishing	Capacity Saddle Staple: 15sheets ⁴ , Middle-Fold: 5sheets, Bi-Fold: 1sheet
	Paper Size Max: SRA3, 12 x 18" (304.8x457.2mm) Min: A4, Letter (8.5 x 11")
	Paper Weight Saddle Staple: 60-90gsm ⁵ , Middle-Fold: 60-105gsm, Bi-Fold: 60-220gsm
Dimensions ⁵ / Machine Weight	W850 X D644 X H1,058mm, 81kg
Space Requirement ⁷	W1,936 X D804mm

¹ 80 gsm paper or less.

² When larger-size paper sheets are stacked on smaller-size paper.

³ When all output is in the same size.

⁴ Up to 14 sheets with cover. The saddle stapling capacity can be reset by Customer Engineer.

⁵ The basis weight of a cover sheet shall be equal to or less than 220gsm. If the cover sheet of the basis weight in the range of 91-220gsm is used, the basis weight available for the main body of the document shall be 64-80 gsm.

⁶ Inner connector within the body is excluded.

⁷ Main Unit + Finisher C1 with Booklet Maker, when Extension Tray is pulled out and Bypass Tray is fully extended.

HCF(A4, 1 Tray) (Optional)

Item	Description
Paper Size / Paper Weight	A4 LEF, B5 LEF, 8.5X11", 52-200gsm
Paper Capacity ¹ / Number of Tray	2,000 sheets X 1 tray
Dimensions / Weight	W 389 X D610 X H 380mm, 29kg
Space Requirement ²	W1,491 X D804mm

¹ 80 gsm paper or less.

² Main Unit + HCF (A4, 1 Tray), when the Bypass tray is fully extended.

Notes

- 1) If a problem occurs with the recording medium (hard disk) in the device, received data, stored data, and data registered in the settings, etc. may be lost. Please note that Fuji Xerox will not be held responsible for any damages resulting due to lost data.
- 2) The minimum holding period for replacement precision parts is 7 years after production is ceased for the main unit of the device.



Descriptions in this material, product specifications and / or appearances are subject to change without prior notice due to improvements. Please note that the product colour appears differently from the actual colour as a result of properties of papers or printing ink. Windows and Windows NT are registered trademarks of Microsoft Corporation. NetWare is a registered trademark of Novell, Inc. in the United States. Macintosh, Mac OS and Ether Talk are trademarks of Apple Computer, Inc. PostScript is a registered trademark of Adobe Systems Incorporated in each country. HP-GL is a registered trademark of Hewlett-Packard Company. Other company names or product names are registered trademarks or trademarks of each company.



For Your Safe Use

Before using the product, read the Instruction Manual carefully for proper use. Use the product with an appropriate adequate power source and voltage displayed. Be sure to establish a ground. In the case of a failure or short circuit, an electric shock may result.

Finisher-D2 (Optional)

Item	Description
Tray type	Output tray Sort / Stack
Finishing tray	Sort (Offset available) / Stack (Offset available)
Paper Size/ Paper Weight	Output tray Max: 12X18" (304.8X457.2mm) Min: Postcard (100-148mm) 52 - 250gsm
	Finishing Tray Max: 12X18" (304.8X457.2mm) Min: B5; 52 - 200gsm
Stacker Capacity ¹	Output tray 500 sheet (A4)
	Finishing Tray Without Stapling: A4: 3,000sheets, B4 or larger: 1,500sheets, Mixed Size Stacking ² : 300sheets With Stapling: A4: 200sets (3,000sheets), B4 or larger: 100sets (1,500sheets)
Staple	Capacity 100 sheets ³ (52-80gsm)
	Paper Size Max:A3, 11X17" Min: B5
	Position Single Stapling (Front, Corner/Angled, Center/Parallel, Rear/ Angled, Parallel) ⁵ ; Dual Stapling(Parallel to the edge)
Punch	Number of Holes 2/4 hole punch
	Paper Size A3 ⁵ , 11 x 17" ⁶ , B4, A4, A4 LEF ⁵ , Letter (8.5 x 11") Letter LEF(8.5 x 11") ⁶ , B5 LEF
	Paper Weight 52-200gsm
Paper Fold ⁶ (option)	Z fold Paper size: A3, 11X17", B4
	Tri fold Paper Weight: 60-90gsm
	Paper size: A4, Letter (8.5 x 11") Paper Weight: 60-90gsm
Interposer ⁸	Paper Size Max: A3, 11X17" Min: B5 LEF
	Paper Weight 60-220gsm
	Capacity ¹ 200 sheets
Power Supply / Power Consumption	AC220-240V +/- 10%, 1A, 50/60Hz, AC110 +/- 10% ¹¹ , 2A, 50/60Hz, AC220-240V: 240VA or less, AC110V: 220VA or less
Dimensions/ Machine Weight	W1,045 x D725 x H1,165 mm, 105kg Folder Unit D2 attached: W1,245 x D725 x H1,165mm, 175kg
Space Requirement ⁸	W2,137 x D804mm Folder Unit D2 attached: W2,331 x D804mm

¹ 80 gsm paper or less.

² When larger-size paper sheets are stacked on smaller-size paper.

³ When using paper that the size is larger than A4, Letter (8.5x11"), 65 sheets. When using paper that the weight is 80gsm or more, the capacity may become less than 100sheets.

⁴ Rear corner stapling is available for A4LEF, A3 only. For the other sizes, single staple parallel to the edge is applied.

⁵ 4-hole available sizes.

⁶ The Optional Fold Unit D2 is required for the folding.

⁷ Nothing can be printed on the sheets loaded in the Interposer.

⁸ Main Unit + Finisher D2, when Extension Tray is pulled out and Bypass Tray is fully extended.

⁹ Since it uses a separate power supply from the device, an additional Power Cord is required.

Finisher-D2 with Booklet Maker (Optional)

Item	Description
Tray type	Output tray Sort / Stack
Finishing tray	Sort (Offset available) / Stack (Offset available)
Booklet tray	Sort / Stack
Paper Size/ Paper Weight	Output tray Max: 12X18" (304.8X457.2mm) Min: Postcard (100x148mm); 52-250gsm
	Finishing tray Max: 12X18" (304.8X457.2mm) Min: B5; 52-200gsm
	Booklet tray Max: A3, 12 x 18" (304.8 x 457.2mm), Min: A4, Letter (8.5 x 11") 60-105gsm
Stacker Capacity ¹	Output Tray 500 sheets (A4)
	Finishing Tray Without Stapling: A4: 2,000 sheets, B4 or larger: 1,500 sheets, Mixed Size Stacking ² : 300 sheets With Stapling: A4: 200sets (1,500 sheets), B4 or larger: 100sets (1,500 sheets)
	Booklet Tray 20 sets ³
Staple	Capacity 100 sheets ⁴ (52-80gsm)
	Paper Size Max:A3, 11X17" Min:B5
	Position Single Stapling (Front, Corner/Angled, Center/Parallel, Rear/ Angled, Parallel) ⁵ ; Dual Stapling(Parallel to the edge)
Punch	Number of Holes 2/4 hole punch
	Paper Size A3 ⁶ , 11 x 17" ⁶ , B4, A4, A4 LEF ⁵ , Letter (8.5 x 11") Letter LEF(8.5 x 11") ⁶ , B5 LEF
	Paper Weight 52-200gsm
Booklet Finishing	Capacity Saddle Staple: 15sheets ⁷ , Middle-Fold: 5sheets, Bi-Fold: 1sheet
	Paper Size Max: 12 x 18" (304.8 x 457.2mm) Min: A4, Letter (8.5 x 11")
	Paper Weight Saddle Staple: 60-90gsm ⁸ , Middle-Fold: 60-105gsm, Bi-Fold: 60-220gsm
Folding ⁹	Z-fold Paper size: A3, 11X17", B4
	C-fold Paper Weight: 60-90gsm
	Paper size: A4, Letter(8.5 x 11") Paper Weight: 60-90gsm
Interposer ¹⁰	Paper Size Max: A3, 11 x 17" Min: B5 LEF
	Paper Weight 60-220gsm
	Capacity ¹ 200 sheets
Power Supply	AC220-240V +/- 10%, 1A, 50/60Hz, AC110 +/- 10% ¹¹ , 2A, 50/60Hz, AC220-240V: 240VA or less, AC110V: 220VA or less
Power Consumption	
Dimensions /Weight	W1,050 x D725 x H1,165 mm, 135kg Folder Unit D2 attached: W1,250 x D725 x H1,165mm, 175kg
Space Requirement ¹²	W2,142 x D804mm Folder Unit D2 attached: W2,336 x D804mm

¹ 80 gsm paper or less.

² When larger-size paper sheets are stacked on smaller-size paper.

³ When all output is in the same size.

⁴ When using paper size larger than A4, Letter (8.5x11"), capacity is 65 sheets. When using paper weight of 80gsm or more, the capacity may become less than 100sheets.

⁵ Rear corner stapling is available for A4LEF, A3 only. In the other sizes, single staple parallel to the edge is applied.

⁶ 4-hole available sizes.

⁷ Up to 14 sheets with cover. The saddle stapling capacity can be reset by Customer Engineer.

⁸ The basis weight of a cover sheet shall be equal to or less than 220gsm. If the cover sheet of the basis weight in the range of 91-220gsm is used, the basis weight available for the main body of the document shall be 64-80 gsm.

⁹ The optional Folder Unit D2 is required for the folding.

¹⁰ Nothing can be printed on the sheets loaded in the Interposer.

¹¹ Since it uses a separate power supply from the device, an additional Power Cord is required.

¹² Main Unit + Finisher D2 with Booklet Maker, when Extension Tray is pulled out and Bypass Tray is fully extended.

<Reproduction Prohibitions> Please note that reproduction of the following is prohibited by law: Domestic and overseas bank notes and coins, government-issued securities, national bonds and local bond certificates. Unused postage stamps and post cards. Certificate stamps stipulated by law. The reproduction of works for copyright purposes (literary works, musical works, paintings, engravings, maps, cinematographic works, photographic works, etc.) is prohibited except when they are reproduced personally, at home or within limited range according to the above. This product is equipped with an anti-counterfeit feature. This feature is not intended to prevent illegal reproduction. Be extremely careful about the management of equipment used.



For more information or detailed product specifications, call or visit us at

FUJI XEROX ASIA PACIFIC PTE LTD Malaysia Operations (993478A)

HQ: 10, Jalan Bersatu 13/4, 46200 Petaling Jaya, Selangor. Tel: 03-7882 2888 Toll-Free: 1-300-88-5880

BRANCHES Penang: 19-G-2, B Tower, Bayan Point, Medan Kampung Relau, 11900 Pulau Pinang. Tel: 04-643 5000 Fax: 04-644 4677 Johor Bahru: No. 21 & 23, Jalan Setia Tropika 1/28, Taman Setia Tropika, 81200 Kempas, Johor Bahru. Tel: 07-238 7868 Fax: 07-238 2678, 07-238 2178 Melaka: 43 & 45, Jalan Melaka Raya 13, Taman Melaka Raya, 75000 Melaka. Tel: 06-281 0466 Fax: 06-281 0408 Kota Kinabalu: Lot No. P1/G/4/2/Grd, 1st, 2nd, 3rd & 5th Floor, KK Time Square, 88100 Kota Kinabalu, Sabah. Tel: 088-486 888 Fax: 088-486 668 Kuching: 199A-201, Lot 3049 & 3050, Eastmoores Centre, 2 ½ Mile Jalan Rock, 93200 Kuching, Sarawak. Tel: 082-240 633, 082-254 633 Fax: 082-418 733

<http://www.fujixerox.com.my>