

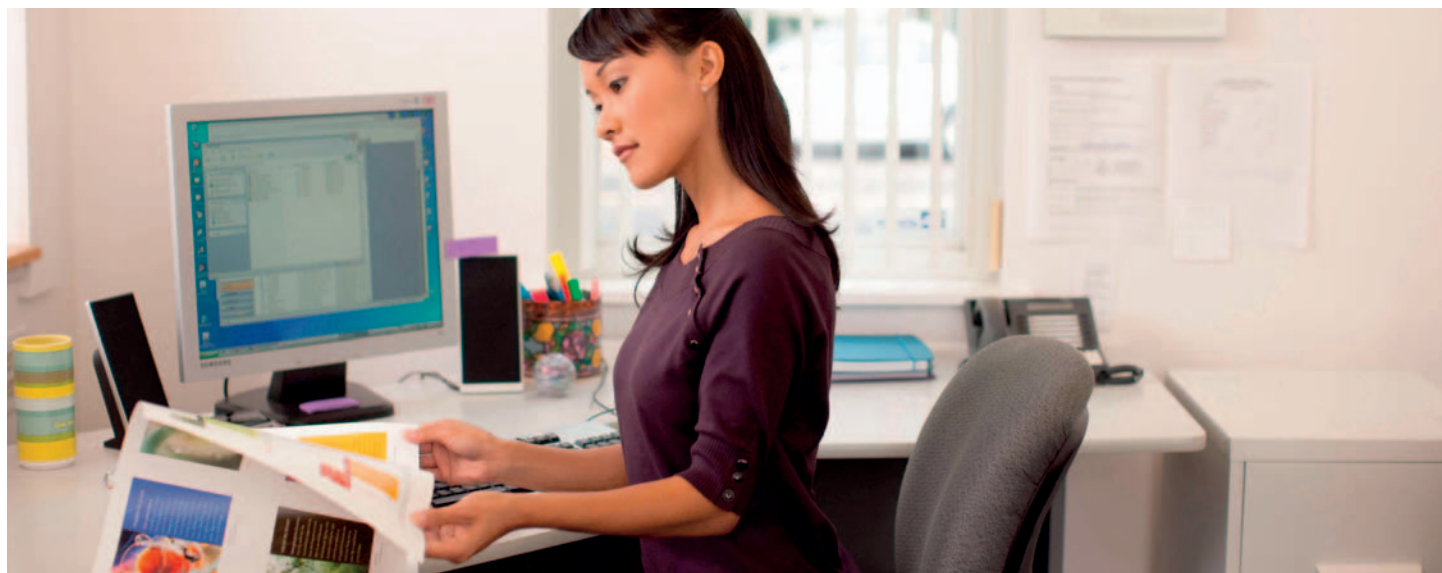
Color 560/570 Printer

Productivity plus outstanding colour
for all environments.



Productivity, scalability and professional image quality, all-in-one.

The Color 560/570 Printer integrates benchmark image quality, expansive media handling and professional finishing with efficient, secure and flexible colour workflows to deliver an affordable print solution for any environment.



Gain new business and keep high-value colour printing in-house.

- Benchmark 2400 x 2400 dpi image quality with excellent colour consistency.
- Emulsion Aggregation (EA) Low Melt Toner gives all your applications a smooth, offset-like finish with outstanding sharpness and uniformity, crisp text and bright highlights.
- Enhanced Gloss Mode setting produces output with a glossy lustre.
- Digital speed, easy set-up and automated workflows accomplish the quick turnarounds and cost-effective short runs customers expect.
- Meets Fogra Certification standards.
- True Adobe® PostScript® 3™ certification and the latest Adobe PDF Print Engine (APPE).

Flexibility to create a wider range of applications.

- Expansive media range lets you print everything from postcards to posters.
- Handles both coated and uncoated stock, up to 300 gsm.
- Inline finishing options offer a professional polish with stapling, hole-punching and folding for presentations, brochures, reports and newsletters.
- Choice of additional print servers allows you to boost colour management and streamline labour-intensive processes.
- Variable data capabilities let you capitalise on personalised applications for direct mail.

Get productivity from start to finish.

- Four standard internal paper trays plus additional feeding options optimise the number of sheets in your print run.
- Swift printing of 60/65 ppm and 70/75 ppm, colour/black and white.
- Load-while-run paper and toner.
- Auto duplex printing up to 176 gsm uncoated* eliminates time-consuming manual intervention.
- An array of Customer Replaceable Units puts you in control of basic maintenance.

*Auto duplex printing can be set up to 220 gsm coated and uncoated, however results and performance are subjected to media testing.

Convenient walk-up operation

Large 10.4-inch, colour user interface features bright, intuitive icons and easy access to all major functions directly from the home screen.

For easy document viewing, colour thumbnails and up-close previews can be shown on the device touch screen.

The entire panel can be tilted making it accessible to just about anyone.



Icons are customizable.
You can place frequently-used functions on the first screen.

Simplify document Management

Full range of scanning solutions.

Simply scan your hard copy documents and get searchable digital files* that can be automatically shared via email or network folder.

*Optional Searchable PDF Kit is required.

Reduce network traffic.

Access scanned documents faster with advanced file compression techniques that dramatically shrink file sizes, reduce storage space requirements and cut down on document traffic on your network*.

*Optional High Compression Image kit is required.

Password protected PDFs require a password to open and view a sensitive scan.

Flexible document handling.

The 250-sheet capacity, document feeder scans at up to 50 images per minute for color and 80 ppm for b/w originals for exceptional productivity in scanning mode.

Easily manage Fuji Xerox devices

CentreWare™ Internet Services

software makes it easy for administrators to configure the device, upload address books, monitor usage and consumables remotely and establish auditing capabilities.

Configure once, apply fleet wide.

Fuji Xerox multifunction device configurations can be cloned and distributed to all similar multifunction devices on your network, eliminating the need to configure and manage each device individually.

Network Authentication restricts access to device features and management settings by validating user names and passwords.

With LDAP integration standard.

Secure authentication, administration and access to your corporate directory is simplified.

Versatility from start to finish.

Professional feeding and finishing are the beginning and end of the perfect job. The Color 560/570 Printer gives you all the options you need to make anything from coated brochures, newsletters, presentations, direct mail, booklets and more... a great success.

Feeding Options: Add on as your productivity and media handling needs increase.

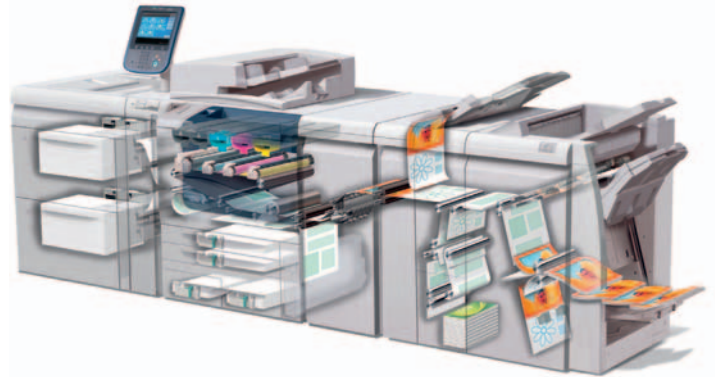
A4 High Capacity Feeder – 2,000 sheets

A4 up to 220 gsm coated

- Great for long run reports, presentations, mailers, etc.

A3 High Capacity Feeder/High Capacity Feeder C1-DS – 2,000 sheets
330 x 488 mm each tray, up to 300 gsm coated. The A3 High Capacity Feeder has 1 tray and the HCF C1-DS has 2 trays. Paper stabiliser minimises skew and roller system prevents misfeeds.

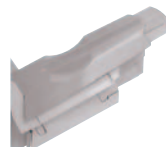
- Reliable feeding for large quantities of coated paper and enables SRA3 full bleed applications



A3 High Capacity Feeder
2,000 sheets: Up to SRA3



High Capacity Feeder C1-DS
2,000 sheets each tray (4,000 sheets total): Up to SRA3



Offset Catch Tray
500-sheet stacking.



Finisher C2 with or without Booklet Maker
Offers 50 sheets, multi-position stapling and 2/4 or 3(optional) hole punching. Optional Booklet Maker enables saddle stitching with center fold for easy booklet making for up to a 60-page booklet and bi-fold brochure assembly.



Finisher D4 with or without Booklet Maker*
This finishing option enables coated booklets, brochures and bi-fold mailers as well as stacking, stapling and hole punching. It also includes an interposer input tray. Even more versatility can be obtained with the addition of the optional tri-fold, Z-fold and tabloid Z-fold module for this finisher.

* Interface module required

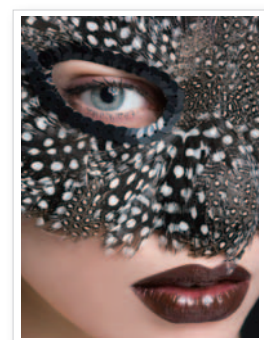
Create exciting new applications – easily finished inline.

The printing world is exploding with new applications and new ways to use colour, media and finishing. The superb image quality, robust media latitude, flexible finishing options, modularity and server options of the Color 560/570 Printer, integrated with enterprise workflows, make it the perfect device for capturing new business, keeping more applications in-house.



Production printing with enterprise workflows at an affordable price.

Image quality, ease of use, productivity, media latitude, feeding and finishing options, are at your fingertips. Grow your digital colour printing capabilities and reduce costs with the Color 560/570 Printer.

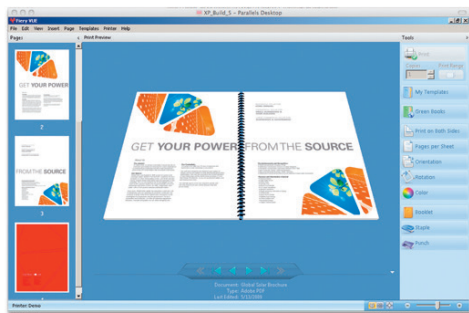


- **Brochures** – easily create professional, colourful brochures with productivity boosting inline folding and square fold trimming
- **Presentations/Newsletters** – inline stapling and hole punching makes producing presentations and newsletters quick and easy
- **Manuals and Reports** – inserted tabs keep annual reports and financial reports organised, while stapling and hole-punching keep pages secure
- **Posters** – expanded media range lets you run eye-catching posters on sturdy coated media – up to SRA3
- **Photo applications** – impeccable colour and photo-finish image quality will keep customers coming to you for all today's latest photo applications

Server options to meet every need.

The Color 560/570 Printer offers a range of servers to fit your environment depending on your workflow, applications and preferences.

Add any of the following optional servers, depending on skill levels and business needs.



EXi Integrated Fiery® Color Server

Get fast RIP speeds and great productivity while simplifying and streamlining your workflow by automating job submissions of repetitive job types with optional Hot Folders and Virtual Printers. Fiery ColorWise colour management tools produce precise, exact colour. And its basic variable data capabilities let you customise output with varying text, photos and graphics.

Technology

- Load-while-run toner and paper capability
- Line Screens 600, 300,200 and 150 Clustered Dot, 200 Rotated Line Screen
- Advanced Registration Technology for tighter control, ±1.2mm along lead edge, ±2.4mm side to side
- Custom paper set-up/alignment profiles
- EA low melt toner
- Active decurling for heavy-weight media

Durability

- Duty Cycle¹:300,000
 - Average Monthly Print Volume²: 10,000 to 50,000 pages per month
- 1 Duty cycle - Maximum volume capacity expected in any one month. Not expected to be sustained on a regular basis.
- 2 Average Monthly Print Volume - Expected regular monthly throughput.

Selected Colour / Graphic Arts Credentials

- Fogra certification, PANTONE® Matching System
- PANTONE® GOE™, PANTONE® Plus

Foreign Interface Device

- Foreign Interface Kit enables the connection of external devices such as auditrons or coin-op devices. This will perform in copy and print modes

Specifications for the Color 560/570 Printer

Basic Specifications / Print Function

Item	Description
Colour Capability	Full colour
Printing Resolution	2,400×2,400dpi
Continuous Printing Speed* ¹	[Monochrome] [Colour] Color 560 Printer A4 65 pages/min 60 pages/min A3 33 pages/min 30 pages/min Color 570 Printer A4 75 pages/min 70 pages/min A3 37 pages/min 35 pages/min
Paper Size* ²	[Tray 1, 2] Standard size: Max. A3 Min. A5 Non-standard size: 140×182mm - 330 × 458mm [Tray 3, 4] Standard size: Max. A4 Min. B5 Non-standard size: 140×182mm - 297×432mm [Bypass Tray] Standard size: Max. A3 Min. A6 Non-standard size: 140×182mm - 330×488mm
Paper Weight	[Tray 1, 2, 3, 4] 64 - 220gsm* ³ [Bypass Tray] 64 - 300gsm* ³
Paper Tray Capacity* ⁴	Standard: 500 sheets×2+870 sheets+1,140 sheets+Bypass Tray 250 sheets Options: A4 High Capacity Feeder 2,000 sheets×1 A3 High Capacity Feeder 2,000 sheets×1 High Capacity Feeder C1-DS 2,000 sheets×2 Maximum Paper Capacity: 7,260 sheets (Standard with High Capacity Feeder C1-DS)
Output Tray Capacity* ⁵	500 sheets, Max standard size: A3
Power Supply	AC220-240V 10A 50/60Hz
Power Consumption* ⁶	2.4 kW or less
Dimensions* ⁷	W1,574 × D804 × H1,392mm
Weight* ⁸	273 kg

*1: When continuously printing a single document. 64-105 gsm, uncoated paper. Print speed may be reduced depending on conditions of output data, as well as on whether auto image quality adjustment is performed, on whether the job includes a mixture of paper sizes and types, and other reasons. *2: Image loss width: Lead edge 4.0 mm, Tail edge 4.0 mm, Front 3.5 mm, and Rear 3.5 mm. *3: Auto duplex printing is supported for paper weights ranging from 64 to 176 gsm. *4: 90 gsm paper *5: Catch tray, 90 gsm paper *6: Main unit with catch tray. *7: Includes main unit and control panel. Excludes output tray and external print server. With the Manual Tray closed. *8: Includes main unit, photoreceptor, and control panel. Excludes output tray, external print server, paper, and toner.

Scan Function

Item	Description
Original Paper Size	Max. 297×431.8mm (A3)
Scanning Resolution	600×600dpi, 400×400dpi, 300×300dpi, 200×200dpi
Scanning Speed* ¹	Monochrome: 80 pages/min Colour: 50 pages/min
Scanning Method	Scan to Folder (TWAIN), Scan to PC (FTP, SMB), Scan to e-mail

*1: For A4 1-sided, 200 dpi. The scanning speed varies depending on documents.

Copy Function

Item	Description
Scanning Resolution	600×600 dpi
Printing Resolution	2,400×2,400 dpi (Multicolored photo) 600×600 dpi (Text/Photo & Text/Photo/Maps)
Scanning Speed	Monochrome: 65 pages/min Colour: 50 pages/min
First Copy Output Time	Monochrome: 4.1 seconds or less (A4) Colour: 6.5 seconds or less (A4)

Duplex Automatic Document Feeder (DADF)

Item	Description
Original Paper Size	Standard size: Max. A3 Min. A5 Non-standard size: 139.7×210mm - 297×432mm
Original Paper Weight	38-105 gsm
Capacity* ¹	250 sheets
Feeding Speed (A4)* ²	[Monochrome] 65 pages/min [Colour] 50 pages/min
Dimensions	W620×D530×H160mm
Weight	21.5kg

*1: 80 gsm paper. *2: Copy Mode

A4 High Capacity Feeder (A4 HCF) (Option)

Item	Description
Paper Size	Standard size: Max. A4 Min. B5
Paper Weight	64 - 220gsm* ¹
Paper Tray Capacity	2,000 sheets×1* ²
Dimensions	W 389×D 610×H 377mm
Weight	29kg

*1: For uncoated paper. *2: 90gsm paper

A3 High Capacity Feeder (A3 HCF) (Option)

Item	Description
Paper Size	Standard size: Max. A3 Min. A6* ¹ Non-standard size: 100×148mm - 330×488mm* ²
Paper Weight	64 - 300gsm* ³
Paper Tray Capacity	2,000 sheets×1* ⁴
Power Supply	AC100-240V 3A 50/60Hz
Power Consumption	300W or less
Dimensions	W 988×D 762×H 992mm
Weight	177kg

*1: When Postcard kit is used. *2: When loading non-standard size paper whose length in the paper direction is 100 to 182 mm, be sure to attach Postcard kit in the tray. *3: For uncoated paper. *4: 90gsm paper

High Capacity Feeder C1-DS (HCF C1-DS) (Option)

Item	Description
Paper Size	Standard size: Max. A3 Min. A6* ¹ Non-standard size: 100×148mm - 330×488mm* ²
Paper Weight	64 - 300gsm* ³
Paper Tray Capacity	2,000 sheets×2* ⁴
Power Supply	AC100-120V 5.0A 50/60Hz / 200-240V 3.0A 50/60Hz
Power Consumption	600 W or less
Dimensions	W 988×D 762×H 992mm
Weight	207kg

*1: When Postcard kit is used. *2: When loading non-standard size paper whose length in the paper direction is 100 to 182 mm, be sure to attach Postcard kit in the tray. *3: For uncoated paper. *4: 90gsm paper

Interface Module*¹ (Option)

Item	Description
Power Supply	AC100 2.5A - AC240V 1.5A 50/60Hz
Power Consumption	360 W or less
Dimensions	W 345×D 725×H 992mm
Weight	50kg

*1: Interface Module is necessary for connecting the Finisher D4 to the Color 560/570 Printer.

Specifications for the Color 560/570 Printer

Finisher C2 (Option)

Item		Finisher C2	Finisher C2 with Booklet Maker
Tray Type (Collate/Stack)	Output Tray	Collate/Stack	
	Finisher Tray	Collate (Offset) / Stack (Offset)	
	Booklet Tray	-	Collate/Stack
Paper Size	Output Tray	Standard size: Max. A3, Min. A6 Non-standard size: Max. 330x488mm Min. 100x148mm	
	Finisher Tray	Standard size: Max. A3, Min. B5 Non-standard size: Max. 330x488mm Min. 203x182mm	
	Booklet Tray	-	Standard size: Max. A3 Min. A4 Non-standard size: Max. 330x457mm Min. 210x279mm
Paper Weight	Output Tray	64 - 300gsm	
	Finisher Tray	64 - 220gsm	
	Booklet Tray	-	64 - 105gsm*1
Stacking Capacity*2	Output Tray	500 sheets (A4)	
	Finisher Tray	[Without stapling] A4: 3,000 sheets B4 and larger: 1,500 sheets Mixed size stack*3: 300 sheets [With stapling] A4: 200 sets or 3,000 sheets B4 and larger: 100 sets or 1,500 sheets	[Without stapling] A4: 1,500 sheets B4 and larger: 1,500 sheets Mixed size stack*3: 300 sheets [With stapling] A4: 200 sets or 1,500 sheets B4 and larger: 100 sets or 1,500 sheets
	Booklet Tray	-	20 sets*4
Staple	Staple Capacity	50 sheets*5	
	Paper Size	Max. A3 Min. B5	
	Staple Position	1 position (Front: angled, Rear: angled) 2 positions (Parallel)	
Punch	Number of punch holes	2/4 or 2/3 (optional)	
	Paper Size	Max. A3 Min. B5	
	Paper Weight	64 - 200gsm	
Booklet/Bi-Fold	Capacity	-	Booklet: 15 sheets*6 Bi-Fold: 5 sheets
	Paper Size	-	Max. A3, 13x18" (330x457mm) Min. A4
	Paper Weight	-	64 - 105gsm*1*7
Dimensions	W 772xD 650xH 1,010mm		W 921xD 650xH 1,010mm
Weight	55kg		86kg

*1: 64-220gsm paper can be used as a cover sheet. *2: 90gsm Paper *3: When larger size sheets are stacked on top of smaller size sheets. *4: For 15 sheets/set booklet. Paper may not be accepted depending on paper type and other usage conditions. *5: For 64-90 gsm paper. *6: When cover is applied, the maximum is 14 sheets. *7: When cover is applied, the staple capacity can decrease depending on type and weight of paper being used and other conditions.

Finisher D4*1 (Option)

Item		Finisher D4	Finisher D4 with Booklet Maker
Tray Type (Collate/Stack)	Output Tray	Collate/Stack	
	Finisher Tray	Collate (Offset) / Stack (Offset)	
	Booklet Tray	-	Collate/Stack
Paper Size	Output Tray	Standard size: Max. A3 Min. A6 Non-standard size: Max. 330x488mm Min. 100x148mm	
	Finisher Tray	Standard size: Max. A3 Min. B5 Non-standard size: Max. 330x488mm Min. 203x182mm	
	Booklet Tray	-	Standard size: Max. A3 Min. A4 Non-standard size: Max. 330x457mm, Min. 210x279mm
Paper Weight	Output Tray	64 - 300gsm	
	Finisher Tray	64 - 300gsm	
	Booklet Tray	-	64 - 300gsm
Stacking Capacity*2	Output Tray	500 sheets (A4)	
	Finisher Tray	[Without stapling] A4: 3,000 sheets B4 and larger: 1,500 sheets Mixed size stack*3: 350 sheets [With stapling] A4: 200 sets or 3,000 sheets B4 and larger: 100 sets or 1,500 sheets	[Without stapling] A4: 2,000 sheets B4 and larger: 1,500 sheets Mixed size stack*3: 350 sheets [With stapling] A4: 200 sets or 2,000 sheets B4 and larger: 100 sets or 1,500 sheets
	Booklet Tray	-	20 sets*4
Staple	Staple Capacity	100 sheets*5	
	Paper Size	Max. A3 Min. B5	
	Staple Position	1 position (Front: angled, Center: parallel, Rear: parallel/angled*6) 2 positions (Parallel)	
Punch	Number of punch holes	2/4 or 2/3 (optional)	
	Paper Size	Max. A3 Min. B5	
	Paper Weight	64 - 200gsm	
Booklet/Bi-Fold	Capacity	-	Booklet: 20 sheets*7 Bi-Fold: 5 sheets
	Paper Size	-	Max. A3, 13x18" (330x457mm) Min. A4
	Paper Weight*8	-	Booklet: 64 - 220gsm Bi-Fold: 64 - 220gsm Bi-Fold (1 sheet): 64 - 300gsm
Paper Fold*9	Z Fold Half Sheet	Paper size: A3, B4 Paper weight: 64-90gsm	
	Tri-fold	Paper size: A4 Paper weight: 64-90gsm	
Interposer	Paper Size	Max. A3 Min. B5	
	Paper Weight	64 - 220gsm	
	Tray Capacity	200 sheets	
Power Supply	AC100 - 240 V, 2A, 50/60Hz		
Power Consumption	203 W or less		
Dimensions	[Without D4-Folder]	W 1,050xD 727xH 1,165mm	
	[With D4-Folder]	W 1,255xD 727xH 1,165mm	
	[With D4-Folder]	W 1,255xD 727xH 1,165mm	
Weight	[Without D4-Folder]	115kg	
	[With D4-Folder]	155kg	

*1: Finisher D4 requires Interface Module. *2: 90gsm Paper *3: When larger size sheets are stacked on top of smaller size sheets. *4: For 15 sheets/set booklet. When over 15 sheets/set, the booklet tray capacity is 15 sets. Paper may not be accepted depending on paper type and other usage conditions. *5: 65 sheets for sizes exceeding A4. *6: Rear angled stapling is supported on A4 and A3 only. For other sizes Parallel is supported. *7: A customer engineer can change the maximum number of booklet sheets, within the limits (up to 25 sheets). *8: For a Booklet/Bi-Fold job during printing, 221-300 gsm paper can be used as a cover sheet. When cover is applied, the staple capacity can decrease depending on type and weight of paper being used and other conditions. *9: Optional D4 Folder is required for the Z-Folding and Tri-folding feature.

Notes

- To comply with paper weight specifications, it is recommended to use Fuji Xerox recommended paper. Document may not be printed correctly depending on usage conditions.
- The minimum availability period for functional spare parts that are needed to repair the product is 7 years after the termination of the product.



For more information or detailed product specifications, call or visit us at

FUJI XEROX ASIA PACIFIC PTE LTD Malaysia Operations (993478A)

HQ: 10, Jalan Bersatu 13/4, 46200 Petaling Jaya, Selangor. Tel: 03-7882 2888 Hunting Line: 1-300-88-5880

BRANCHES Penang: 19-G-2, B Tower, Bayan Point, Medan Kampung Relau, 11900 Pulau Pinang. Tel: 04-643 5000 Fax: 04-644 44677 **Johor Bahru:** No. 21 & 23, Jalan Setia Tropika 11/28, Taman Setia Tropika, 81200 Kempas, Johor Bahru. Tel: 07-238 7868 Fax: 07-238 2678, 07-238 2178 **Melaka:** No. 17, Jalan KL3/11, Kota Laksamana, 75200 Melaka. Tel: 06-281 0466 Fax: 06-281 0408 **Kota Kinabalu:** Block K, Lot 65, Ground Floor - 5th Floor, KK Time Square, 88100 Kota Kinabalu, Sabah. Tel: 088-486 888 Fax: 088-486 668 **Kuching:** 199A-201, Lot 3049 & 3050, Eastmore Centre, 2 1/2 Mile Jalan Rock, 93200 Kuching, Sarawak. Tel: 082-240 633, 082-254 633 Fax: 082-418 733

<http://www.fujixerox.com.my>