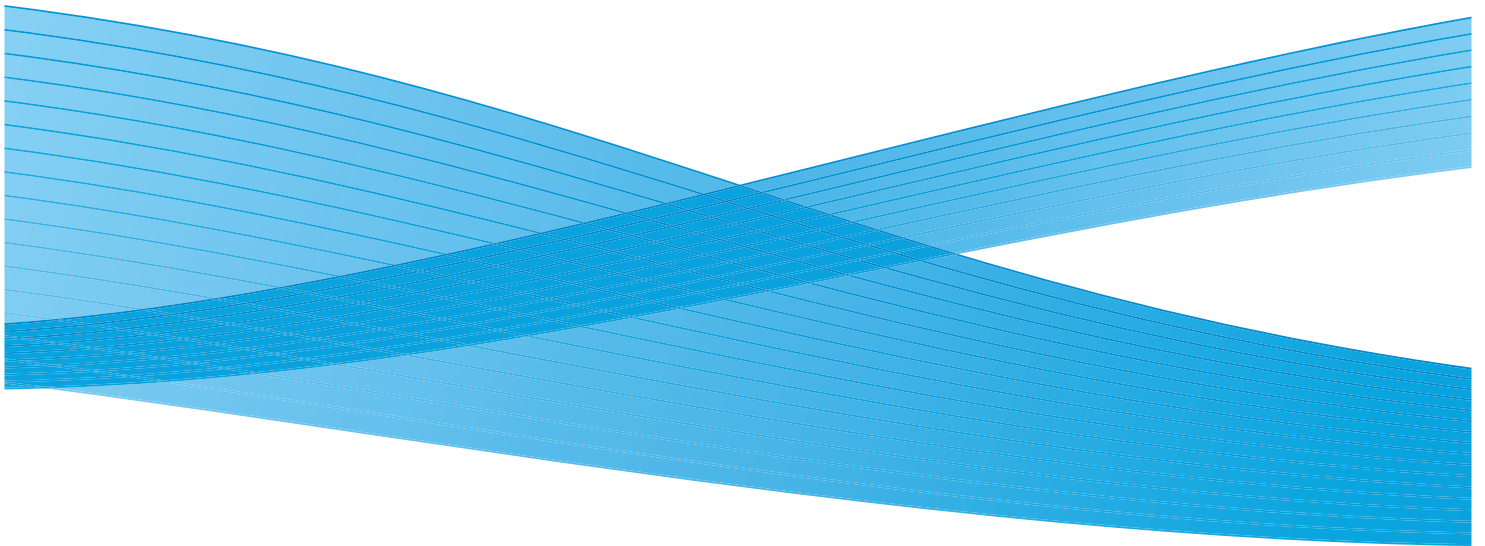


Color 800/1000 Presses

High definition image quality.
Fast. Vibrant. Flexible.



Digitally mastered for fine-tuned image quality.

Color 800/1000 Presses deliver sharp, rich, digitally mastered image quality.

Utilising Fuji Xerox® low melt, Emulsion Aggregation (EA) Dry Ink and new fusing technology, Color 800/1000 Presses bring you an even wider colour gamut that can produce vibrant images with smooth sweeps that command—and hold—attention. Running all weights at rated speeds of 80 or 100 ppm, Color 800/1000 Presses deliver one of the widest ranges of media handling, from a lightweight 55 gsm to a hefty 350 gsm.

Drive more jobs through your shop. Reduce costs. Our Automated Colour Quality Suite of tools for the Color 800/1000 Presses make it possible.

These tools are designed to expand your printing capabilities and to enhance your efficiency and productivity. Our optional clear dry ink station, for example, enables you to apply spot or flood creative effects that bring your prints to life. And with flexible workflow, feeding and finishing, the Color 800/1000 Presses will suit your environment now, and as your business volumes grow.



Image quality so outstanding, you won't want to look away

Our Xerox® “low melt” EA (Emulsion Aggregation) Dry Ink technology uses no fuser oil, giving all your applications a smooth offset like finish. Chemically grown, its small, consistent particles produce great quality with less EA dry ink, for smooth transitions. There are two selections of EA dry ink--either Original or Low Gloss Dry Ink*. Original Dry Ink has been gaining reputation among customers since Color 800/1000 Presses launch for its outstanding image quality. On top of established Original Dry Ink, Low Gloss Dry Ink is newly made available to satisfy customer requirement to generate image quality with lower gloss level. The unique properties of EA Dry Ink are also environmentally friendly.

Advanced Xerox® colour management technology with closed loop process controls enable vivid and consistent colour rendition.

Color 800/1000 Presses print at 2400 x 2400 dpi for excellent sharpness and uniformity. They deliver outstanding midtones, crisp text, pure neutrals, detailed shadows, bright highlights and excellent photo rendering, perfect for today's hot specialty photo applications. And Color 800/1000 Presses maintain benchmark colour consistency, from page to page and job to job.



Productivity and efficiency to the max

We've listened to our customers and leveraged our experience and heritage in the production print industry to develop this newest member of our family. Expanding on our proven success, we've packed design and technology innovations into the Color 800/1000 Presses, making them the image quality and productivity powerhouses that fit your production schedules as well as your workspace. For instance:

- Advanced imaging technology with long life photo receptors and dual wire, auto-cleaning corotrons lasts longer and provides more uniform print quality.
- The seamless Intermediate Belt Transfer (IBT) provides even greater versatility, speed and reliability.
- Tight front-to-back registration within +/- 0.5 mm with electronic controls and sensors that automatically adjust to sheet conditions.
- Highly proficient belt fuser technology efficiently transfers energy and supports wide media latitude to deliver smooth, crisp, clean output at production print speeds.



- Our single-pass decurler integrates both belt and roll technologies for optimal sheet flatness, while the advanced inline cooling module ensures outstanding stack quality.

Automated Colour Quality Suite (ACQS)

You can also opt for our Full Width Array technology, which delivers the Automated Colour Quality Suite (ACQS), a set of colour management tools unique to our entire portfolio of digital colour production presses. These productive tools automate time-consuming daily tasks so colour-critical jobs can be completed faster. Routine tasks such as colour calibration and profiling become simple and quick for your operators.

In addition to those colour management tools, Full Width Array also delivers Image-to-Media Alignment, allowing an operator to automatically adjust for front-to-back registration, perpendicularity, skew and magnification. You can create and store custom paper and alignment profiles for paper stocks to ensure proper alignment.

Delivering outstanding midtones, crisp text, pure neutrals, detailed shadows, bright highlights and excellent photo rendering, the Color 800/1000 Presses are perfect for today's hot specialty photo applications.

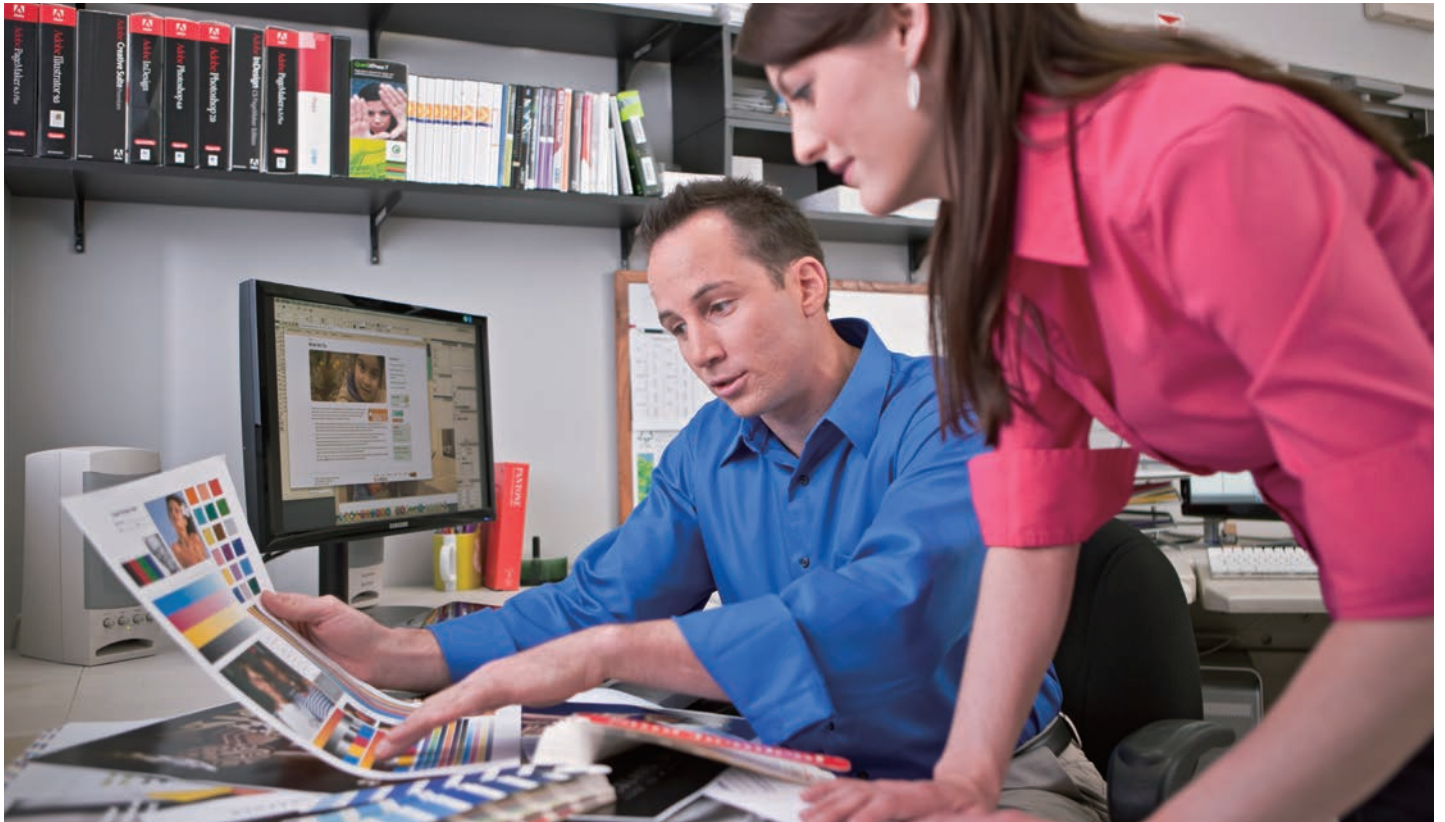
* Low Gloss Dry Ink is available in C, M, Y and K. Original Clear Dry Ink is available to use with both Original CMYK Dry Ink and Low Gloss Dry Ink.

Boost your productivity and achieve accurate, consistent colour—fast.

Color 800/1000 Presses offer you our Automated Colour Quality Suite (ACQS), a set of colour management tools, delivered by optional Full Width Array technology, that dramatically enhance your productivity.

With these efficient tools, your path to high-quality colour printing has never been shorter or more direct. Key tasks are automated to quickly deliver colour accuracy and repeatability from job to job, operator to operator.

The result? More hours to produce more jobs, more efficient operations, better return on your investment, minimise waste and the ability to regularly meet tight turnarounds—leaving your customers delighted.



Fewer steps for operators, more available press time

Your operators typically perform many routine tasks manually—daily, by shift, or by specific print job. While essential, these tasks require operator attention and can cut into your productive print time. And when tasks are performed manually, there's a greater opportunity for error and waste.

By automating regular activities like calibration and profiling with our Automated Colour Quality Suite, you can maximise both operator and print time, saving valuable minutes every time a task is performed. Your operators can initiate tasks easily, making a few simple selections right from your press's intuitive Full Colour Graphical User Interface.

Operators can automate these important tasks

Automated Calibration

Regular colour calibration is an essential step to ensure colour accuracy. It's a step that can cost your operators substantial amounts of print time. With Automated Colour Quality Suite, your operator can initiate calibration at your colour server. From there, the Full Width Array does quick work to ensure consistent colour from your press.

Advanced profiling*

Your operator will achieve accurate colour with advanced profiling capabilities. The advanced profiling feature automatically creates a superior, custom ICC-compliant destination profile for your applications. By mapping RGB and CMYK source images to a desired output standard – like a press or industry standard – you can produce more accurate colour.

Image-to-media Alignment

Your operators can quickly set up the best image-to-paper (front-to-back) registration for your media, save it to the paper profile and use it again and again. With optional Full Width Array, an operator initiates the automated image-to-media alignment. The press will run test prints and perform automatic adjustments for paper alignment inconsistencies such as registration (position), perpendicularity, skew and magnification. You won't require a service call, nor does your operator have to undertake a manual "print-measure-adjust-reprint" process.

More tools to build efficiency

The Full Width Array delivers additional automated procedures, previously reserved for service technicians. These include a procedure to automatically centreline your press, when necessary, at the start of a day or shift, as well as a feature to read and adjust inboard/outboard density. This allows the operator to finish a shift or a long job without having to call or wait for service.

*Advanced Profiling available on Fuji Xerox® FreeFlow® Print Server and CX Print Server, Powered by Creo Colour Server Technology

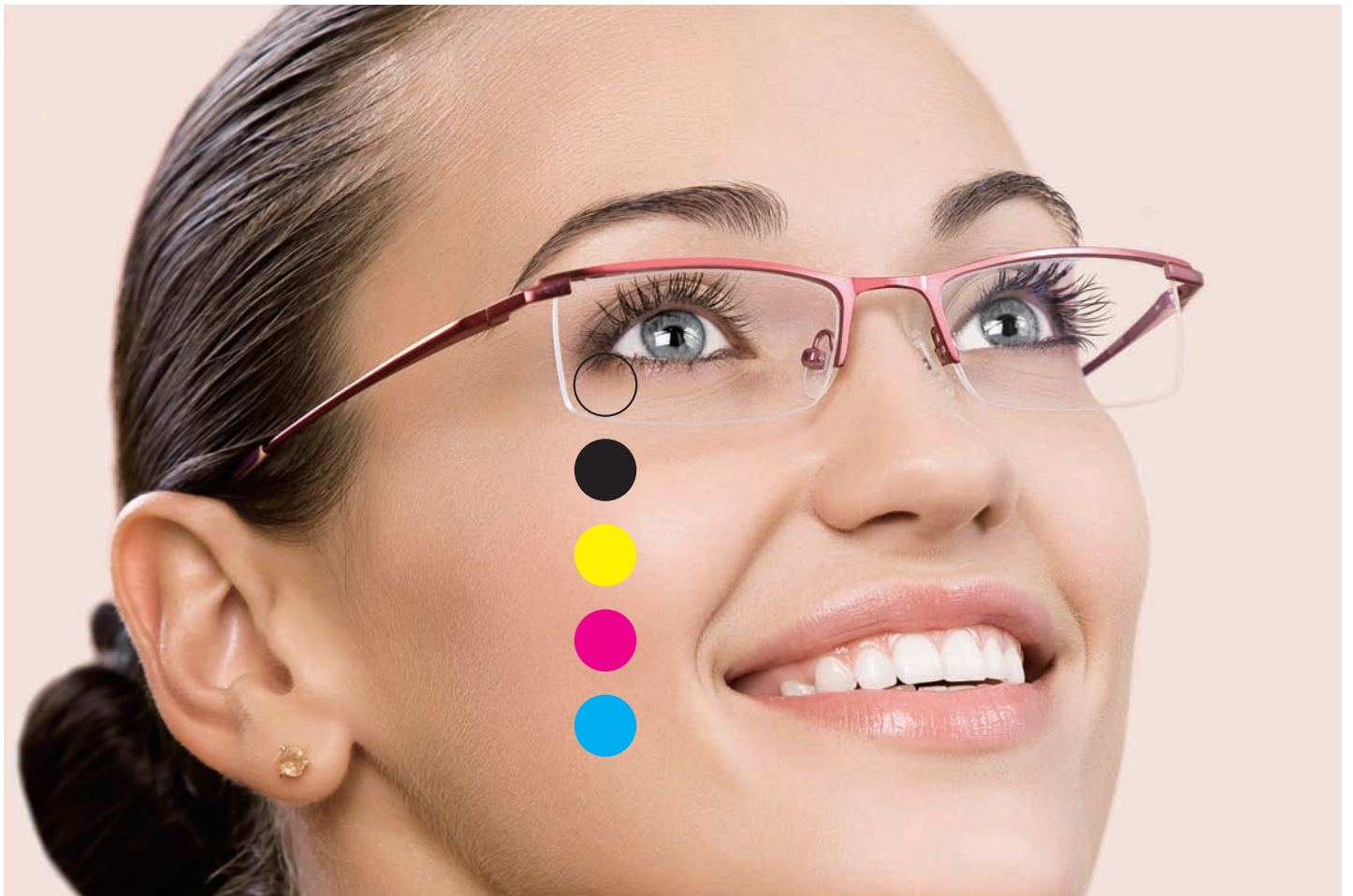


Full Width Array

- Array of RGB sensors that spans the entire width of paper path
- Scans post-fused images on media at rated speed
- Can centreline press and maintain accurate and consistent colour
- Automates image-to-media registration adjustments
- Utilises proven Fuji Xerox® technology

Help your customers be more creative. The value is digitally clear.

Color 800/1000 Presses let you enhance the creativity and impact of your prints with an optional fifth print station that lets you apply a clear effect—expanding your capabilities to capture more high-value applications.



clear dry ink clear dry ink clear dry ink clear dry ink clear dry ink clear dry ink
clear dry ink clear dry ink clear dry ink clear dry ink clear dry ink clear dry ink
clear dry ink clear dry ink clear dry ink clear dry ink clear dry ink clear dry ink
clear dry ink clear dry ink clear dry ink clear dry ink clear dry ink clear dry ink

Clear dry ink also enables you to create a subtle, professional watermark effect or add an element of security. Or, you can flood the entire page with clear to draw attention and create contrast within an application. Go ahead and be creative. Using clear dry ink gives you the ability to add a new dimension to your printing business, helping your customers differentiate their printed pieces. With clear dry ink, you can highlight images for visual variety, making them pop off the page; draw attention to headlines and variable text; highlight photos, logos or variable images; create artistic effects; add watermarks and visual value and elegance to your customers' output. Applying spot clear dry ink on top of Low Gloss Dry Ink is especially effective to make spot clear dry ink outstanding*.

The creative options you can offer by adding this new, clear dry ink capability can help you become a true partner to your customers. You can advise customers already expert in design and layout on how to set up their files properly for this additional clear layer to achieve their desired effect. Or you can offer creative value to customers when they deliver their files, by adding some of these effects right at your print server.

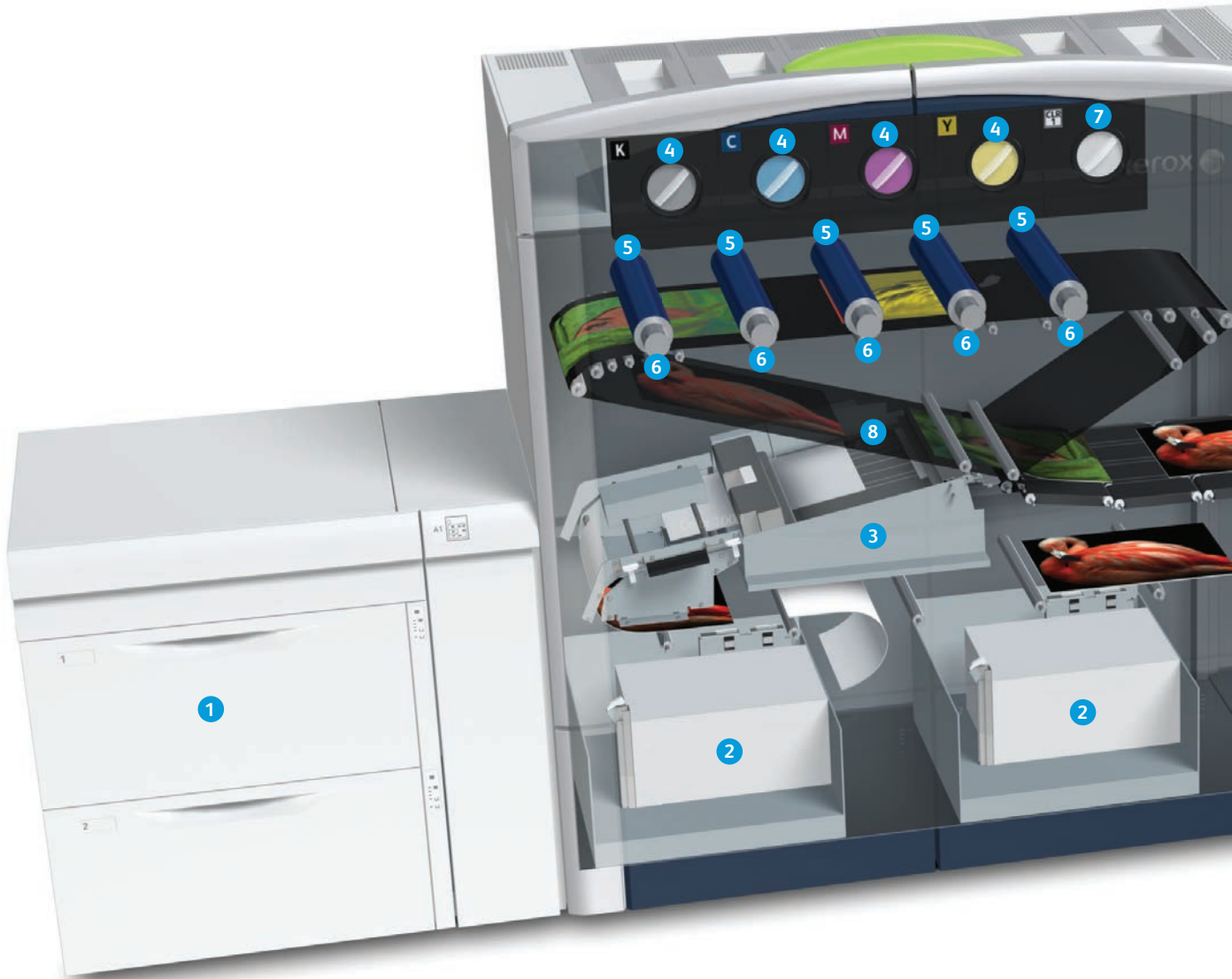
* In comparison with Original Dry Ink. Please note that the image quality depends on substrate used, image area coverage and other attributes.



- With clear dry ink, you can address specific areas on your printed piece or flood an entire sheet, enabling you to:
- Highlight images for visual variety to make them pop off the page
 - Draw attention to a headline or variable text
 - Enhance photos, logos or variable images
 - Simulate pearlescent or metallic appearance
 - Apply digital watermarks to add artistic effects or enhance security
 - Enhance print quality of textured stocks

clear dry ink clear dry ink clear dry ink clear dry ink clear dry ink clear dry ink
 clear dry ink clear dry ink clear dry ink clear dry ink clear dry ink clear dry ink
 clear dry ink clear dry ink clear dry ink clear dry ink clear dry ink clear dry ink
 clear dry ink clear dry ink clear dry ink clear dry ink clear dry ink clear dry ink

Precision engineering built for your applications. Look inside.



1

Optional High Capacity Feeder C2-DS

Additional two 2,000 sheet tray module can be added to extend paper capacities for a total of 8,000 sheets and four pick points that accommodate different stocks. Auto-Tray Switching and reload-while-run capabilities optimise press time.

2

Standard Feeders

Unique integrated design promotes a smaller overall footprint. Two 2,000 sheet trays enable you to run lightweight and heavyweight stocks from 55–350 gsm (15 lb Bond to 130 lb Cover) with sizes ranging from 7.2" x 7.2" (182 mm x 182 mm) up to 13" x 19.2" (330 mm x 488 mm).

3

Paper Alignment

Ensures precise, +/- 0.5 mm front-to-back registration with electronic controls and sensors that automatically adjust for paper size.

4

Dry Ink Stations

Allow for load-while-run capability. Emulsion Aggregation (EA) Dry Ink produces high quality using less dry ink and no fuser oil, supporting a clean print processing environment.

5

High Resolution Imaging

(Drum Developer Housing) State-of-the-art Vertical Cavity Surface Emitting Laser (VCSEL) technology provides outstanding 2400 x 2400 dpi resolution and digital halftone screens.

6

Auto Cleaning Wire Corotrons/Long Life Photo Receptors

Dual wire/ grid design provides more uniform charge to the photo receptor to deliver more stable print quality within page and page to page. Self-cleaning technology optimises press availability while maintaining high print quality standards.

Integrated design, with features such as Standard Paper Trays engineered to be conveniently located within the print engine, reduces the overall footprint while paper path technology enhancements improve productivity.



7
Clear Dry Ink Station (Optional)
 Lets you expand the creativity and impact of your documents to capture more high-value applications at full rated speeds of 80 or 100 pages per minute.

8
Seamless Intermediate Belt Transfer
 Provides even greater versatility, speed and reliability across a wide range of media and applications.

9
Fuser Belt Module
 New silicon-coated Teflon belt technology rapidly transfers energy more efficiently to fuse a dynamic range of stocks at higher (rated) speed up to 350 gsm.

10
Inline Cooling Module
 Cools prints for optimum finishing and stacking.

11
Single Pass Decurler
 Optimal sheet flatness using belt and roll technology.

12
Interface Module
 This optional component provides a gateway to support a wide variety of finishing alternatives.

13
Full Width Array (Optional) Inline scanner bar with array of RGB sensors maintains consistent image quality, ensures quick, accurate colour reproduction and boosts your productivity by automating key tasks for your operators.

14
Output Tray
 Provides quick and easy access for short runs and proofs.

15
High Capacity Stacker
 Provides production stacking capabilities (available in single and dual combinations) by supporting all media regardless of size and weight. Removable cart adds unload-while-run capability maximising press time.

Keeping your business moving.

Productivity is the name of the game in all areas of your business today.

Customers demand you give them fast delivery of their jobs—with consistent, great image quality—and the flexibility to quickly turn around unexpected work. We've designed the Color 800/1000 Presses from the ground up to make sure you can meet these demands on schedule. Intrinsic in our design is the ability for you to easily, quickly carry out routine maintenance tasks, letting you optimise available press time and puts image quality under your control, 24 hours a day, seven days a week.



There are a variety of regularly scheduled procedures that we have simplified for you or your operators to perform at the time that is right for your business, without interrupting your workflow. Diagnostics software will alert you when a scheduled routine is approaching—it provides you status information and guides you step by step through the replacement procedures.

Dry ink, belts and corotrons have all been designed for optimum life, but when it's time for a change, we now put you in control. Parts snap in quickly and fit precisely, keeping replacement times to a matter of minutes. It's our way of helping you increase uptime, maximise productivity and optimise the performance of your Color 800/1000 Presses.

The choice is yours. The results are outstanding.

Different environments require different workflows. So, to accommodate your specific needs, we offer a choice of three unique, high performance colour servers that help you generate graphic arts colour quality. They all have advanced colour management features and support variable data printing. In addition, all Colour Server options support Adobe PDF Print Engine, allowing you to accurately reproduce complex design elements as well as advanced graphic effects.

Fuji Xerox® FreeFlow® Print Server

This extremely fast, powerful and easy-to-use colour server with ConfidentColour Technology provides enhanced colour management and on-demand digital production capabilities. Built-in features such as Page Parallel RIP for optimised processing of variable information, page-exception programming, job forwarding and customisable print queues make job management easier.



CX Print Server, Powered by Creo Colour Server Technology

The robust CX Print Server combines colour management tools that yield superb colour output with an architecture specifically designed to maximise variable data productivity. And its platform integrates seamlessly with commercial print and high-end workflow environments.



EX Print Server, Powered by Fiery®

EX Print Servers increase companies' production and profits and deliver outstanding finished jobs simply and quickly. The innovative high-speed servers automate workflows and produce great colour and image quality that are consistent and accurate every time.



Choose the perfect finish for your applications.

You can build the finishing combination that best services your needs, whether you deliver a wide range of jobs or focus on a vital few... we have the variety of finishing alternatives to meet your needs. Offering a range of choices for all production environments, Color 800/1000 Presses have the most complete, flexible, cost-effective finishing options in their class. It's so easy to add a professional finish to complement the outstanding image quality, clear dry ink design creativity and unique substrates made possible by the Color 800/1000 Presses. The best part: with its modular design, you can keep adding on as your business grows.



- 1**

Optional High Capacity Feeder C2-DS
- 2**

Color Press Print Engine (optional clear dry ink station available)
- 3**

Standard Sheet Trays
- 4**

PC Graphical User Interface
- 5**

Interface Module (Finishing)
- 6**

Dual High Capacity Stackers
- 7**

Optional D4 Folder Unit : C-fold, Z-fold, Engineering Z-fold
- 8**

200 Sheet Standard Post Process Inserter
- 9**

Finisher D4 with Booklet Maker
- 10**

SquareFold® Trimmer Module

Configurations to meet your specific production needs.

Color 800/1000 Presses with High Capacity Stacker

Delivers maximum print productivity—delivering high quality, flat output sheets so you can quickly and efficiently leverage offline finishing.



Color 800/1000 Presses with High Capacity Feeder C2-DS, Finisher D4 with Booklet Maker with D4 Folder Unit and SquareFold® Trimmer

Flexible system to handle more “finished-on-demand” applications like booklets, tri-folds, bi-folds and more. The high capacity feeder enables more unattended volume and/or more media types in your documents.



Color 800/1000 Presses with High Capacity Feeder C2-DS, High Capacity Stacker and Perfect Binder

Productivity and professionally finished perfect-bound books and manuals. With our unique offline mode for the perfect binder, more people in your print shop can generate perfect-bound books while your Color 800/1000 Press operator can print efficiently to the high capacity stacker.



Color 800/1000 Presses with High Capacity Feeder C2-DS, Finisher D4 with Booklet Maker and Plockmatic Pro 30 Booklet Maker

Your output can meet a vast array of application requirements, including flat sheet sets, a variety of stapled sets, an economical lay-flat binding and saddle-stitched booklets with full bleed trim capabilities.



Finishing Options

From high capacity stacking, hole punching and folding to perfect-bound books, square fold booklets and lay-flats, our array of finishing options add polish to all your applications.

Finishing Options



Interface Module (required to support finishing modules)



High Capacity Stacker (Single or Dual) up to 5,000 Sheet Stacker Cart (Top Tray 500 Sheets)

Your choice for long production runs, removable carts make it easy to unload your large jobs. Dual stackers support unload-while-run capability so you can be even more productive.



Finisher D4 with Optional D4 Folder Unit (2-100 sheets, 3-position variable length stapler)

Enhance your standard finishing applications with convenience and flexibility. Variable length stapling for up to 100 sheets delivers neat output, regardless of your document size. Hole-punching saves time and money, while the optional folder enables you to create applications featuring bi-fold, C-, Z- and Engineering Z-folding.



Finisher D4 with Booklet Maker with Optional D4 Folder Unit (25 sheets* or 100 page booklets)

Incorporating all of the features of the Finisher D4, plus booklet-making capabilities. Ideal for large booklets and calendars, up to 25 sheets* with 100 imposed pages, 100 imaged sides. Excellent handling of approved coated stocks along with saddle-stitch and bi-fold capabilities.

*Its folding and stapling accuracy may not be as accurate as those of a booklet of 20-sheet. Please conduct a test using your media prior to create multiple numbers of booklets.



SquareFold® Trimmer Attaches to the optional Finisher D4 with Booklet Maker

Enhance your professional finishing even further with creased cover sheets, face trimming and control of trim and square fold thickness. Create crisp, sharp square spine booklets that can be opened flat and are easy to handle, stack and store.



Perfect Binder*

Say “yes” to more applications—novelty books, manuals, textbooks, course books, magazines, catalogs, trade books and selected photo books and yearbooks. Use inline or offline, you’ll have big capabilities in a small footprint. You can use mixed media to create these higher-value books, inserting pre-printed covers or covers printed in your workflow.

*Available post-launch.

Additional Finishing Options



Finisher D5 for Finishing Transport

Includes Finisher D4 with Booklet Maker features with Optional D4 Folder Unit plus DFA (Document Finishing Architecture) required to support additional finishing options.



GBC® eBinder 200™ *

Produce full 360°, “lay flat” booklets easily and quickly. You’ll have stack, punch and bind functionality, all in one inline device. Bind books of two to 100 sheets. Durable, self-adjusting polyester bind elements let you create professional flip presentations and calendars as well.



PlockMatic Pro 30 Booklet Maker* (several options available including SquareFold®, Cover Feeder, Face Trimmer and Bleed Trim Unit)

Produce larger professional-quality booklets—up to 30 sheets—while running at full rated speed for top productivity. Add optional SquareFold module to further enhance finish. Great for offline use as well.

Feeding Option



High Capacity Feeder C2-DS

Provides an additional two 2,000 sheet tray modules that you can add to extend your paper capacities for a total of 8,000 sheets and four pick points to accommodate various stocks. Includes convenient insertion tray that allows you to handle smaller sheets (4" x 6"/102 mm x 152 mm)—ideal for specialty card applications. Auto-Tray Switching and reload-while-run capabilities help optimise your productivity.

*Available only in limited countries. Please contact your local sales representative for availability.

Specifications for Color 800/1000 Presses

Image Resolution

- 2400 x 2400 dpi VCSEL ROS
- Halftone Screens:
 - 150 Clustered Dot
 - 200 Clustered Dot
 - 300 Clustered Dot
 - 600 Clustered Dot
 - 200 Rotated Line Screen
 - Stochastic

Technology

- Xerox® EA Low Melt Dry Ink
 - CMYK Plus Clear Dry Ink Imaging (rated speed)
 - Imaging System with VCSEL Technology
- Customisable Electronic Aligner Adjustments (profiles)
- Custom Paper Setup
- Dual wire corotrons with auto cleaning technology
- Advanced Belt Fuser technology
- Advanced inline cooling module
- Advanced Single Pass Decurler (belt and roll technology/optimal sheet flatness)
- Seamless IBT (Intermediate Belt Transfer) with retractable Bias Transfer Rollers
- Long life photo receptors
- Modular feeding and finishing
- Advanced centre registration technology for tight front-to-back registration of +/- 0.5 mm
- Integrated Customer Care Design – Xerox® Productivity Plus (Basic)

Color 800/1000 Presses Productivity/

Print Speeds—AWM

- 80/100 ppm (8.5" x 11"/A4 letter), all weights 55–350 gsm (15 lb Bond to 130 lb Cover)
- 4800/6000 full process colour A4 (letter) 4/0 impressions per hour
- 44/50 ppm (11" x 17"/A3–12" x 18"/SRA3), all weights 55–350 gsm (15 lb Bond to 130 lb Cover)
- 2400/3000 (11" x 17"/A3–12" x 18"/SRA3 tabloid) 4/0 impressions per hour and 4800/6800 (8.5" x 11"/A4) IMP

Paper Format/Sizes

- Maximum Sheet Size: 13" x 19.2" (330 x 488 mm)
- Minimum Sheet Size: 7.2" x 7.2" (182 x 182 mm), tray inserter kit supports for 4" x 6" (102 mm x 152 mm); see Optional High Capacity Feeder
- Maximum Print Area: 12.83" x 19.05" (326 mm x 484 mm)
- Maximum Print Image Assurance: 12.48" x 19.05" (317 mm x 484 mm)

Paper Flexibility/Weights

- Coated and uncoated papers, bright papers, DocuCard®, labels, business cards, glossy brochures, window decals, durable/synthetic papers, greeting cards, tabs, embossed, polyesters and custom solutions
- Mixed-stock jobs supported
- 55–350 gsm (15 lb Bond to 130 lb Cover)

Paper Capacity and Handling

- Standard Paper Trays: Two at 2,000 sheets each
Note: Tray capacity is based on 24 lb (90 gsm) substrate
55–350 gsm (15 lb Bond to 130 lb Cover) coated/uncoated
- Minimum Sheet Size: 7.2" x 7.2" (182 x 182 mm) to Maximum Sheet Size: 13" x 19.2" (330 x 488 mm); optional tray inserter kit supports 4" x 6" (102 mm x 152 mm) minimum sheet size
- Auto-Tray Switching/Reload-While-Run Capability
- Auto-Perfecting (4/4 impressions) from all trays up to 350 gsm (130 lb Cover) at full rated speed

Electrical

- Base Configuration: 200 - 240 V, 50A, 50/60Hz
- Additional electrical required for print server, feeding/finishing devices:
 - High Capacity Feeder C2-DS: 100V±10%, 5A, 50/60Hz
 - Interface Module: 100V±10%, 2.5A, 50/60Hz
 - High Capacity Stacker: 100V±10%, 1.5A, 50/60Hz
 - Finisher D4: 100V±10%, 2A, 50/60Hz
 - Finisher D4 with Booklet Maker: 100V±10%, 2A, 50/60Hz
 - SquareFold Trimmer Module: 100V±10%, 0.8A, 50/60Hz
 - Perfect Binder: 200 - 240V, 3A, 50/60Hz

Size

- Base Printing System (without controller and/or feeding finishing devices)
 - 2,995 (W) x 1,107 (D) x 1,864 (H) mm, 1,390kg (without PC UI)

Duty Cycle

Color 800 Press

- 1.5 million

Color 1000 Press

- 1.75 million

Choice of Colour Servers

- Fuji Xerox® FreeFlow® Print Server
- EX Print Server, Powered by Fiery®
- CX Print Server, Powered by Creo Print Server Technology

Options

Feeding

- Oversized High Capacity Feeder:
 - Two Paper Trays at 2,000 sheets each*Note: Tray capacity is based on 24 lb (90 gsm) substrate*
 - 55–350 gsm (15 lb Bond to 130 lb Cover) coated/uncoated
 - Minimum Sheet Size: 7.2" x 7.2" (182 x 182 mm) to Maximum Sheet Size: 13" x 19.2" (330 x 488 mm)
 - Automatic Tray Switching/Reload-While-Run Capability
 - Automatic perfecting (4/4 impressions) from all trays up to 350 gsm (130 lb Cover) at rated full rated speed

Stacking

- Catch Tray—with 500 sheet capacity
- High Capacity Stacker (HCS)
 - 500 sheet top tray up to 13" x 19.2" (330 x 488 mm)
 - 5,000 sheet offset stacking; 7.2" x 8.3" up to 13" x 19.2" (B5 LEF to SRA3)
 - 55–350 gsm (15 lb Bond to 130 lb Cover) coated/uncoated
 - Available in Single or Dual combinations with unload-while-run capability
 - Includes one stacker cart for offline finishing/ additional carts available

Finishing

- Finisher D4
 - 55–300 gsm (15 lb Bond to 110 lb Cover) coated/uncoated
 - Stacker capacity of 3,000 sheets (20 lb Bond/80 gsm); top tray 500 sheets (20 lb Bond/80 gsm)
 - Multi-position single or dual 100 sheet variable length stapling (coated and uncoated)
 - 2 and 4-hole punch. 3-hole punch is also available as an option
 - 200 sheet interposer for pre-printed and full bleed sheets

- Finisher D4 with Booklet Maker
 - Includes features of the Finisher D4 with a 2,000 sheet stacker tray plus:
 - Automatically creates booklets of up to 25 sheets* (100 imaged sides with saddle stitching) from 13" x 18", 12" x 18"/SRA3, 11" x 17"/A3, 8.5" x 14"/B4 or 8.5" x 11"/A4
- SquareFold® Trimmer Module
 - Square fold up to 25 sheets (100 pages)
 - Face trim between 2–20 mm in 0.1 mm increments
 - 64–300 gsm (uncoated); 106–300 gsm (coated)
 - Accepts paper sizes: 8.5" x 11" SEF (216 mm x 279 mm) minimum; 13" x 18" (330 mm x 457 mm) maximum
 - Available with Finisher D4 with Booklet Maker only
- Perfect Binder
 - 20-400 page books (80 gsm paper)
 - Covers: 90 gsm-300 gsm coated and uncoated; up to 13" x 19.2" (330 mm x 488 mm); sheets; B5–SRA3)
 - Body pages
 - Uncoated 64–105 gsm
 - Coated 90–105 gsm
 - Coated 106–163 gsm can be used as interleaf (maximum of 10 sheets per book)
 - Can use mixed media
 - Standard book sizes
 - Trade: 5.5" x 8.5" (139.7 mm x 215.9 mm)/ 6" x 9" (152.4 x 229 mm)
 - Manuals: 8.5" x 11"/A4
 - Custom: 5.86" x 6.88" (148.8 mm x 174.8 mm) min– 10.1" x 12.6" (256.5 mm x 320 mm) max

Folding/Punching

- D4 Folder Unit
 - C-fold and Z-fold 8.5" x 11"/A4
 - Print on inside or outside of folded paper
 - Folds 11" x 17"/A3 Z-fold for insertion into letter/A4 document sets (Engineering Z-fold)
 - Available with Finisher D4, Finisher D4 with Booklet Maker and Finisher D5 for Finishing Transport

Additional (DFA) Finishing Solutions

- Finisher D5 for Finishing Transport
 - Stacker capacity of 2,000 sheets (20 lb Bond/80 gsm)
 - Same features as Standard Finisher with integrated DFA architecture required to enable a variety of third party inline finishing options including those listed below
- Plockmatic Pro 30 Booklet Maker**
 - Saddle stitch and fold from 2 sheets to 30 sheets producing up to a 120 page (20 lb Bond/80 gsm) booklet or simply fold a single sheet
 - SquareFold, Trimmer and Cover Feeder available (available with Finisher D5 for Finishing Transport configurations only)
- GBC eBinder 200™**
 - Stack, punch and bind lay flat (8.5" x 11"/A4) booklets from 5 to 100 sheets
 - Self-adjusting bind elements (one-size-fits-all) available in black, navy blue, white and frost/clear
 - Pass through capability permits chaining with other finishing alternatives (available with Finisher D5 for Finishing Transport configurations only)

* Its folding and stapling accuracy may not be as accurate as those of a booklet of 20-sheet. Please conduct a test using your media prior to create multiple numbers of booklets.

** Available only in limited countries. Please contact your local sales representative for availability.

For more information or detailed product specifications, call or visit us at

FUJI XEROX ASIA PACIFIC PTE LTD Malaysia Operations (993478A)

HQ: 10, Jalan Bersatu 13/4, 46200 Petaling Jaya, Selangor. Tel: 03-7882 2888 Toll-Free: 1-300-88-5880

BRANCHES Penang: 19-G-2, B Tower, Bayan Point, Medan Kampung Relau, 11900 Pulau Pinang. Tel: 04-643 5000 Fax: 04-644 4677 **Johor Bahru:** No. 21 & 23, Jalan Setia Tropika 1/28, Taman Setia Tropika, 81200 Kempas, Johor Bahru. Tel: 07-238 7868 Fax: 07-238 2678 , 07-238 2178 **Melaka:** 43 & 45, Jalan Melaka Raya 13, Taman Melaka Raya, 75000 Melaka. Tel: 06-281 0466 Fax: 06-281 0408 **Kota Kinabalu:** Lot No. P1/G/42/Grd, 1st, 2nd, 3rd & 5th Floor, KK Time Square, 88100 Kota Kinabalu, Sabah. Tel: 088-486 888 Fax: 088-486 668 **Kuching:** 199A-201, Lot 3049 & 3050, Eastmoore Centre, 2 ½ Mile Jalan Rock, 93200 Kuching, Sarawak. Tel: 082-240 633, 082-254 633 Fax: 082-418 733

<http://www.fujixerox.com.my>

XEROX, and the sphere of connectivity design are trademarks or registered trademarks of Xerox Corporation in the U.S. and/or other countries. ApeosPort is a trademark or registered trademark of Fuji Xerox Co., Ltd. Other trademarks are the property of their respective owners.

